

# LAND CORNER RECORDATION CERTIFICATE

Filing Requirement of Act 74, Mich. PA 1970

For Corners In:			
Oscoda	Located In	Corner Code #	
(County)			
1. Public Land Survey	T <u>28N</u> R <u>2E</u>	<u>G-3</u>	
	T _____ R _____		
2. Property Controlling in Section	S <u>9</u> T <u>28N</u> R <u>2E</u>	<u>5</u>	
	S _____ T _____ R _____		
3. Miscellaneous Property in Section	S _____ T _____ R _____		
	S _____ T _____ R _____		

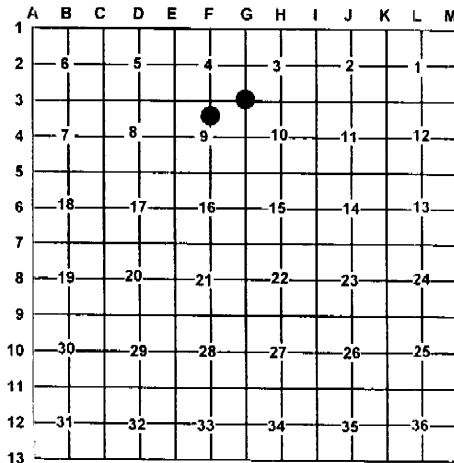
Register of Deeds Stamp & File Number

4. Lot No: \_\_\_\_\_ Recorded Plat: \_\_\_\_\_

5. Private Claims: \_\_\_\_\_

I, Carl T. Kiiskila, in a field survey on December 3, 2004 do hereby state that under requirements of PA 74, Michigan PA of 1970, the corner points mentioned in lines 1 and 2 above were in conformance with regulations and rules therefore as required in the current manual of survey instructions of the United States Department of the Interior, Bureau of Land Management or by a decree of a Court of Law and/or that the corner points mentioned in lines 3, 4 and 5 above were in conformance with the rules of the Michigan Board of Land Surveyors or by a Decree of a Court of Law; established, re-established, monumented, recovered, found as expressed below:

**NOTE: Not more than 2 corners, all in the same town and range, may be recorded on this certificate.**



**A. Description of original monument and accessories and/or subsequent restoration:**

G-3 G.L.O. William Coon 1839 Set post corner section 9,10,3, and 4. Wit: Y. Pine 20 N49°E 1.09 links  
Spruce Pine 8 N4.25°W 60 links

5- This corner position was not established during the original government survey.

December 1970, Kenneth J. Ostling R.L.S. #10068 found a post bottom previously located in 1958 during a corner search by the Department of Conservation, set a Department Monument.

Wit: 10" J. Pine N40°E 16.45'  
5" R. Pine N43°W 71.8'  
9" J. Pine S67°W 13.9'

**B. Description of corner evidence found and/or method applies in restoring or re-establishing corner:**

G-3 Re-established the Northeast corner of section 9 using Kenneth J. Ostling's 1970 survey measurements in section 9.

5- Established the Northwest corner of the Southwest quarter of the Northeast quarter of section 9 as per B.L.M. instructions for the subdivision of a section.

**C. Description of monument for corner and accessories established to perpetuate locating the position of the corner:**

G-3 Set 1" X 32" pipe with DNR cap  
Wit: 8" R. Pine S27°W 67.83'  
11" R. Pine N83°W 44.90'  
12" R. Pine N38°W 72.02'  
9" J. Pine S58°E 70.02'  
Blue Carsonite Post North 1'±

5- Set a 5/8" X 32" rerod with P.S. cap #33981  
Wit: 9" Oak S89°E 19.61'  
10" Oak N22°E 46.51'  
8" Maple S39°W 25.82'  
12" Oak S12°E 34.10'  
Blue Carsonite Post North 1'±

Signed by: Carl T. Kiiskila  
Surveyor's Michigan License No.: 33981

Date: 1-6-05

