

LAND CORNER RECORDATION CERTIFICATE

Filing Requirement of Act 74, Mich. PA 1970

For Corners In: Otsego	Located In	Corner Code #	
(County)			

1. Public Land Survey	T	29N	R 1W	K-12
	T	29N	R 1W	L-11
2. Property Controlling in Section	S	T	R	
	S	T	R	
3. Miscellaneous Property in Section	S	T	R	
	S	T	R	

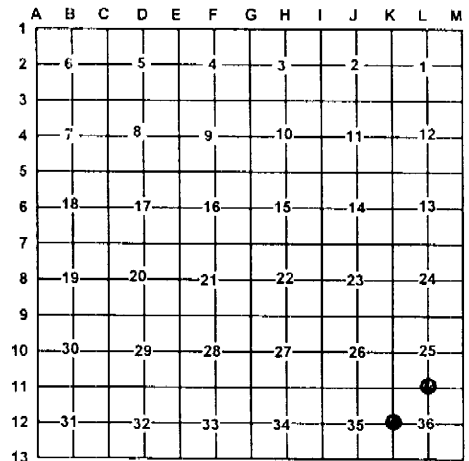
4. Lot No: _____ Recorded Plat: _____

5. Private Claims: _____

I, Carl T. Kiiskila, in a field survey on June 24, 2003 do hereby state that under requirements of PA 74, Michigan PA of 1970, the corner points mentioned in lines 1 and 2 above were in conformance with regulations and rules therefore as required in the current manual of survey instructions of the United States Department of the Interior, Bureau of Land Management or by a decree of a Court of Law and/or that the corner points mentioned in lines 3, 4 and 5 above were in conformance with the rules of the Michigan Board of Land Surveyors or by a Decree of a Court of Law; established, re-established, monumented, recovered, found as expressed below:

NOTE: Not more than 2 corners, all in the same town and range, may be recorded on this certificate.

Register of Deeds Stamp & File Number



A. Description of original monument and accessories and/or subsequent restoration:

K-12 G.L.O. Harvey Mellen 1856 Set quarter section post Wit: Spruce Pine 9 S67°W 18 links Spruce Pine 10 N30°E 15 links	L-11 G.L.O. Harvey Mellen 1856 Set quarter section post Wit: Yellow Pine 9 N67°E 11 links B. Oak 6 N46°W 6 links
Liber 3, Page 248 and 249 October 1968 S. Thorsen had 1/2" bar in corner Wit: Oak 8" S70°E 32.3' Oak 8" S12°E 4.6' J. Pine N30°W 24.4'	Liber 2, Page 568 1957- Stanley O. Thorsen witnessed the South quarter corner of section 25. Type of monument not given. Wit: J. Pine 5" N40°W 24.3' J. Pine 7" S05°E 26.1'

B. Description of corner evidence found and/or method applies in restoring or re-establishing corner:

K-12 Re-established the West quarter corner of section 36 by single proportionate measurement between corner K-11 and K-13.	L-11 Found 1/2" X 48" iron bar.
---	---------------------------------

C. Description of monument for corner and accessories established to perpetuate locating the position of the corner:

K-12 Set Otsego County Monument as a careful and faithful re-establishment of the position of the original corner. Wit: 6" J. Pine S03°W 28.18' 9" Oak S67°E 32.93' 8" J. Pine N26°E 44.61' 4" J. Pine N67°W 33.43' Carsonite Post North 1'±	L-11 Set Otsego County Monument as a careful and faithful re-establishment of the position of the original corner. Wit: 18" Triple Oak S19°E 41.47' 5" Poplar N47°E 22.18' 4" Poplar N68°W 17.44' 3" White Pine S07°W 34.04' Carsonite Post North 1'±
---	--

Signed by: Carl T. Kiiskila
 Surveyor's Michigan License No.: 33981

Date: 6-3-04

