

**LAND CORNER RECORDATION CERTIFICATE**  
**Filing Requirement of Act 74, Mich. P.A. 1970**

For corners in

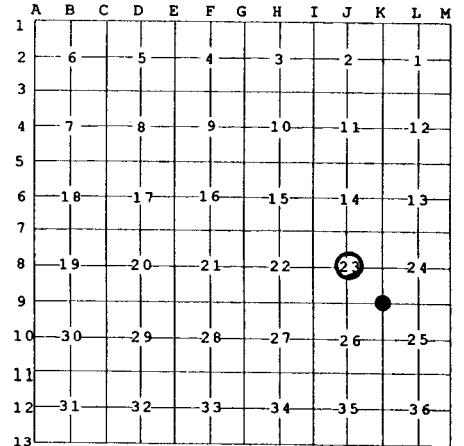
<u>Otsego</u> (County)	Located In:	Corner Code #
1. Public Land Survey	T 29N R 2W	J-8
	T 29N R 2W	K-9
2. Property Controlling in Section	S T R	
	S T R	
3. Miscellaneous Property in Sec.	S T R	
	S T R	

**Register of Deeds Stamp & File Num**

4. Lot No. \_\_\_\_\_, Recorded Plat \_\_\_\_\_

5. Private Claims \_\_\_\_\_

I, Carl T. Kiiskila, in a field survey on July 14, 19 99 do hereby state that under requirements of P.A. 74, Michigan P.A. of 1970, the corner points mentioned in lines 1 and 2 above were in conformance with regulations and rules therefore as required in the current manual of survey instructions of the United States Department of the Interior, Bureau of Land Management or by a decree of a Court of Law and /or that the corner points mentioned in lines 3, 4 and 5 above were in conformance with the rules of the Michigan Board of Land Surveyors or by a Decree of a Court of Law; established, re-established, monumented, recovered, found as expressed below:



**NOTE:** Not more than 2 corners, all in the same town and range, may be recorded on this certificate.

**A. Description of original monument and accessories and/or subsequent restoration:**

J-8	This corner position was not established during the original government survey.	K-9	GLO set section post – Harvey Mellen, D.S. – Oct. 1856. Wit: Hemlock 18" S 56° E 28 links Hemlock 12" N 80° W 14 links
			Liber 2, page 152 N. Caldwell, RLS # 12018 found a drain tile monument on Sept. 25, 1979. Wit: East 30.0' Fence south West 30.0' Fence south South 30.0' Fence west N 45° E 0.4' Steel post

**B. Description of corner evidence found and/or method applied in restoring or reestablishing corner:**

J-8	Established the center of Section 23 at the intersection of the north-south and east-west one-quarter lines.	K-9	Found and accepted a concrete monument for the Southeast corner of Section 23.
-----	--	-----	--

**C. Description of monument for corner and accessories established to perpetuate locating the position of the corner:**

J-8	Set a 5/8" x 32" rod with PS cap and carsonite marker post. Wit: Set nail in 5" Jack Pine N 5° E 40.69' Set nail in 6" Cherry N 46° W 96.31' Set nail in 8" Red Pine N 73° W 136.46' Set nail in 10" Red Pine S 21° W 31.66' Centerline east-west trail road & ATV trail South 96' ± Carsonite post set North 1'	K-9	Found a concrete monument. Wit: 4" steel gate/fence post N 45° E 0.4' Set nail in 6" Cherry N 2° W 16.10' Set nail in 10" twin Maple S 64° W 89.84' Set nail in 8" Maple S 9° W 87.26'
-----	--	-----	--

Signed by Carl T. Kiiskila  
 Surveyor's Michigan License No. 33981



Date 8-11-99