

# LAND CORNER RECORDATION CERTIFICATE

Filing Requirement of Act 74, Mich. PA 1970

For Corners In:  
Otsego Located In \_\_\_\_\_ Corner Code # \_\_\_\_\_  
 (County)

1. Public Land Survey	T	<u>29N</u>	R	<u>4W</u>	<u>B-9</u>
	T	<u>29N</u>	R	<u>4W</u>	<u>A-9</u>
2. Property Controlling in Section	S	_____	T	_____	_____
	S	_____	T	_____	_____
3. Miscellaneous Property in Section	S	_____	T	_____	_____
	S	_____	T	_____	_____

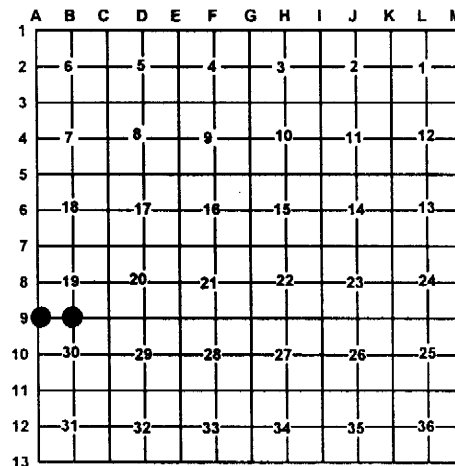
4. Lot No: \_\_\_\_\_ Recorded Plat: \_\_\_\_\_

5. Private Claims: \_\_\_\_\_

I, Carl T. Kiiskila, in a field survey on April 8, 2003 do hereby state that under requirements of PA 74, Michigan PA of 1970, the corner points mentioned in lines 1 and 2 above were in conformance with regulations and rules therefore as required in the current manual of survey instructions of the United States Department of the Interior, Bureau of Land Management or by a decree of a Court of Law and/or that the corner points mentioned in lines 3, 4 and 5 above were in conformance with the rules of the Michigan Board of Land Surveyors or by a Decree of a Court of Law; established, re-established, monumented, recovered, found as expressed below:

**NOTE: Not more than 2 corners, all in the same town and range, may be recorded on this certificate.**

Register of Deeds Stamp & File Number



**A. Description of original monument and accessories and/or subsequent restoration:**

B-9 G.L.O. Harry Mellen 1856 Set quarter section post  
 Wit: Maple 10 S58°W 4 links  
 Beech 7 N05°E 4 links

A-9 G.L. O. James Mullett 1839 Set post corner  
 Wit: Beech 10 N34°W 37 links  
 Beech 12 S79°W 28 links

Michigan Department of Conservation set a Department of Conservation Monument for the corner while working in the area in 1957. No witnesses were given.

**B. Description of corner evidence found and/or method applies in restoring or re-establishing corner:**

B-9 Found 42" X 1" pipe with "T" iron and tag #10710 (George Young).

A-9 Found a Michigan Department of Conservation Monument fitting the Michigan Department of Conservation survey in the area.

**C. Description of monument for corner and accessories established to perpetuate locating the position of the corner:**

B-9 Set county Monument  
 Wit: 8" R. Pine N83°E 71.57'  
 7" W. Pine S17°W 70.51'  
 10" J. Pine N76°W 68.90'  
 7" R. Pine N02°E 81.52'  
 18" W. Pine stump S12°E 10.70'  
 Carsonite Post North 1±

A-9 Michigan Department of Conservation Monument.  
 Wit: 10" Cherry N19°W 35.96'  
 12" R. Pine N87°W 62.47'  
 21" Old W. Pine stump N60°E 7.1'  
 10" Cherry S34°E 33.36'  
 8" R. Pine N79°E 23.97'  
 Carsonite Post North 1±

Signed by: \_\_\_\_\_

*Carl T. Kiiskila*

Date: \_\_\_\_\_

7-6-04

Surveyor's Michigan License No.: \_\_\_\_\_

33981

