

LAND CORNER RECORDATION CERTIFICATE

Filing Requirement of Act 74, Mich. PA 1970

For Corners In:
Otsego Located In _____ Corner Code # _____
 (County)

1. Public Land Survey	T	<u>29N</u>	R	<u>4W</u>	<u>B-11</u>
	T	<u>29N</u>	R	<u>4W</u>	<u>C-11</u>
2. Property Controlling in Section	S	_____	T	_____	_____
	S	_____	T	_____	_____
3. Miscellaneous Property in Section	S	_____	T	_____	_____
	S	_____	T	_____	_____

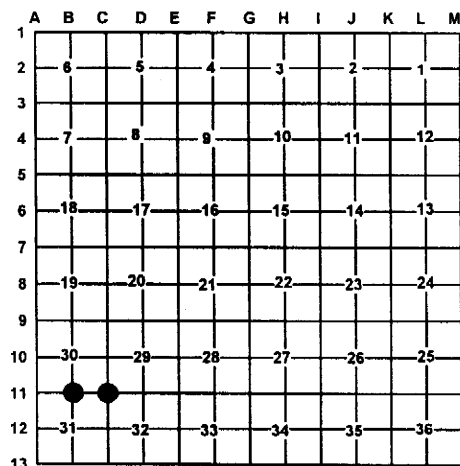
4. Lot No: _____ Recorded Plat: _____

5. Private Claims: _____

I, Carl T. Kiiskila, in a field survey on April 29, 2003 do hereby state that under requirements of PA 74, Michigan PA of 1970, the corner points mentioned in lines 1 and 2 above were in conformance with regulations and rules therefore as required in the current manual of survey instructions of the United States Department of the Interior, Bureau of Land Management or by a decree of a Court of Law and/or that the corner points mentioned in lines 3, 4 and 5 above were in conformance with the rules of the Michigan Board of Land Surveyors or by a Decree of a Court of Law; established, re-established, monumented, recovered, found as expressed below:

NOTE: Not more than 2 corners, all in the same town and range, may be recorded on this certificate.

Register of Deeds Stamp & File Number



A. Description of original monument and accessories and/or subsequent restoration:

B-11 G.L.O. Harry Mellen 1856 Set quarter section post Wit: Maple 12 N41°W 43 links Maple 10 S33°W 20 links	C-11 G.L.O. Harry Mellen 1856 Set post corner Wit: Hemlock 20" N55°E 40 links Hemlock 12" N42°W 15 links
---	--

Liber 3, Page 105, May 1993, Paul B. Lapham P.S.# 9433

Found capped iron.
 Wit: 10" J. Pine N80°E 19.0'
 Quad Maple S10°W 39.75'
 10" J. Pine N70°W 77.90'

B. Description of corner evidence found and/or method applies in restoring or re-establishing corner:

B-11 Found 1/2" capped iron rod #25875 (Garth D. Stowe) replaced with county monument.	C-11 Found "T" iron with tag # 6525 (Thomas F. Schweigert) replaced with county monument.
--	---

C. Description of monument for corner and accessories established to perpetuate locating the position of the corner:

B-11 Otsego County Monument Wit: 8" J. Pine N89°E 18.91' 7" J. Pine N16°E 15.24' 8" J. Pine N48°W 77.49' 7" Maple clump S24°W 39.75' Carsonite Post North 1±	C-11 Otsego County Monument Wit: 12" Twin Maple N26°W 150.44' 12" J. Pine S26°E 61.00' 8" Cherry S30°W 72.82' 26" Pine Stump tag # 6525 S62°W 29.6' Fence corner N and S N65°W .4' 26" Pine stump tag # 6525 S57°E 56.4' Carsonite Post
---	--

Signed by: Carl T. Kiiskila
 Surveyor's Michigan License No.: 33981

Date: 7-6-04

