

LAND CORNER RECORDATION CERTIFICATE

Filing Requirement of Act 74, Mich. PA 1970

For Corners In:
Osseo Located In _____ Corner Code # _____
 (County)

1. Public Land Survey		T	<u>30N</u>	R	<u>4W</u>	<u>L-5</u>
		T	<u>30N</u>	R	<u>4W</u>	<u>K-5</u>
2. Property Controlling in Section	S	T	_____	R	_____	_____
	S	T	_____	R	_____	_____
3. Miscellaneous Property in Section	S	T	_____	R	_____	_____
	S	T	_____	R	_____	_____

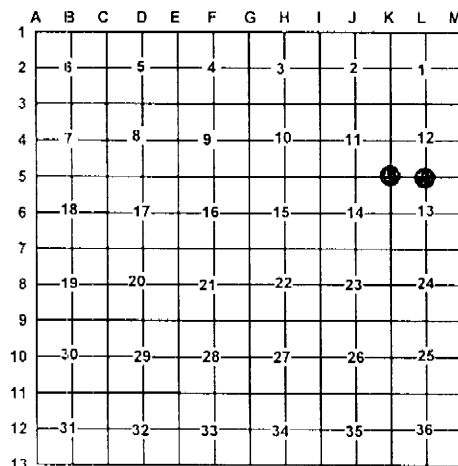
4. Lot No: _____ Recorded Plat: _____

5. Private Claims: _____

I, Carl T. Kiiskila, in a field survey on June 23, 2003 do hereby state that under requirements of PA 74, Michigan PA of 1970, the corner points mentioned in lines 1 and 2 above were in conformance with regulations and rules therefore as required in the current manual of survey instructions of the United States Department of the Interior, Bureau of Land Management or by a decree of a Court of Law and/or that the corner points mentioned in lines 3, 4 and 5 above were in conformance with the rules of the Michigan Board of Land Surveyors or by a Decree of a Court of Law; established, re-established, monumented, recovered, found as expressed below.

NOTE: Not more than 2 corners, all in the same town and range, may be recorded on this certificate.

Register of Deeds Stamp & File Number



A. Description of original monument and accessories and/or subsequent restoration:

L-5 G.L.O. A.P. Brewer 1856 Old quarter section post
 Wit: Beech 8" N58°E 44 links
 Beech 14" S71°W 21 links

K-5 G.L.O. A.P. Brewer 1856 Intersect at a W. Pine 36 inches in dia. On old corner of section 11,12,13, and 14.
 Wit: Beech 14" N74°E 37 links
 Beech 8" N35°W 21 links

September 1959 Kenneth J. Ostling R.L.S. #10068 found a pointed iron in place as set by G.F. DeLaMater midpoint and online. Set a 1" pipe with a 4" brass cap
 Wit: 5" Aspen S21°W 22.5 links
 30" W. Pine Stump S82°E 55.5 links
 40" W. Pine Stump N18°E 86 links

September 1959 Kenneth J. Ostling R.L.S. #10068 found a 1/2" bar in place in the bole of a large W. Pine Stump previously established by G.F. DeLaMater.
 Wit: 30" W. Pine Stump S72°W 67 links
 26" W. Pine Stump N36°W 47 links

B. Description of corner evidence found and/or method applies in restoring or re-establishing corner:

L-5 Found Department of Conservation monument.

K-5 Found Department of Conservation monument.

C. Description of monument for corner and accessories established to perpetuate locating the position of the corner:

L-5 Department of Conservation monument.
 Wit: 12" W. Pine S10°E 26.54'
 12" Dead W. Pine S82°W 37.08'
 20" W. Pine S82°W 25.75'
 22" W. Pine N04°W 59.01'
 12" W. Pine S41°E 22.80'
 40" W. Pine stump S20°E 57.5'

K-5 Department of Conservation monument.
 Wit: 11" W. Pine S51°W 45.86'
 11" W. Pine S88°W 42.66'
 12" R. Pine N75°E 40.95'
 11" R. Pine N47°E 45.20'
 30" W. Pine stump S77°E 44.2'
 26" W. Pine stump N35°W 30.2'

Signed by: _____

Carl T. Kiiskila

Date: _____

7-21-04

Surveyor's Michigan License No.: _____

33981

