

LAND CORNER RECORDATION CERTIFICATE
Filing Requirement of Act 74, Mich. P.A. 1970

For corners in
Otsego
 (County)

| Located In: | Corner Code ## |
|----------------------------------------------------------------------------------|----------------|
| 1. Public Land Survey T <u>31</u> R <u>1W</u> | <u>H-10</u> |
| T _____ R _____ | _____ |
| T _____ R _____ | _____ |
| T _____ R _____ | _____ |
| 2. Property Controlling in Section S <u>27</u> T <u>31</u> R <u>1W</u> | <u>9</u> |
| S <u>27</u> T <u>31</u> R <u>1W</u> | <u>13</u> |
| 3. Miscellaneous Property in Sec. S <u>27</u> T <u>31</u> R <u>1W</u> | <u>14</u> |
| S _____ T _____ R _____ | _____ |

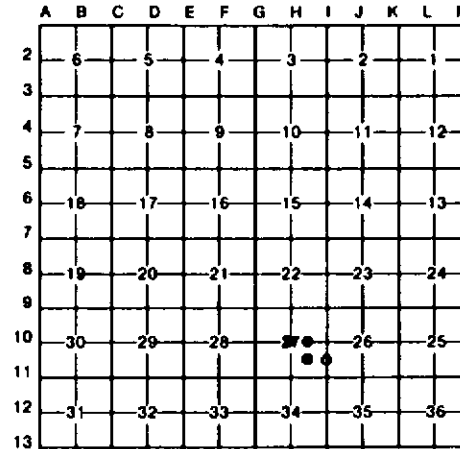
Register of Deeds Stamp & File Number

4. Lot No. _____, Recorded Plat _____
 5. Private Claims _____

I, Carl Johnson, in a field survey on December 9, 19 91, do hereby certify that under requirements of P.A. 74, Michigan P.A. of 1970, the corner points mentioned in lines 1 and 2 above were in conformance with regulations and rules therefore as required in the current manual of survey instructions of the United States Department of the Interior, Bureau of Land Management or by a decree of a Court of Law and/or that the corner points mentioned in lines 3, 4 and 5 above were in conformance with the rules of the Michigan Board of Land Surveyors or by a Decree of a Court of Law; established, re-established, monumented, re-monumented, recovered, found as expressed below:

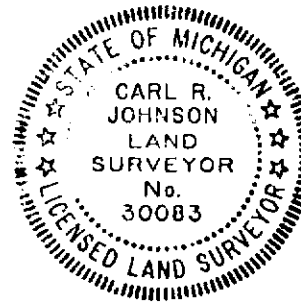
NOTE: Not more than 4 corners, all in the same town and range, may be recorded on this certificate.

A. Description of original monument and accessories and/or subsequent restoration:



B. Description of corner evidence found and/or method applied in restoring or reestablishing corner:

- H-10 - Set at computed intersection of $\frac{1}{4}$ lines.
- 9 - Set by standard survey procedure for subdivision of a section.
- 13 - Set by standard survey procedure for subdivision of a section.
- 14 - Set by standard survey procedure for subdivision of a section.



C. Description of monument for corner and accessories established to perpetuate locating the position of the corner:

| H-10: Center of Sec 27 | 9: E1/8 Cor on E-W $\frac{1}{4}$ Line | 13: Center of SE $\frac{1}{4}$ Sec27 | 14: S1/8 Cor on E Line Sec27 |
|--------------------------------|---------------------------------------|--------------------------------------|--------------------------------|
| DNR mon & Cedar post | 5/8" Rerod w/cap & Cedar post | 5/8" Rerod w/cap & Cedar post | 5/8" Rerod w/cap & Cedar post |
| Cedar 7" S84°W 4.2' | Spruce 6" S32°W 19.3' | Cedar 6" N86°E 20.9' | White Birch 14" S81°W 12.2' |
| Cedar 3" North 7.0' | Maple 14" S11°E 29.1' | Cedar 8" N39°W 26.2' | Maple 5" N34°W 12.6' |
| Cedar 5" N80°E 15.8' | Spruce 6" N62°E 11.45' | Cedar 10" N88°W 25.0' | Maple 8" N33°E 49.4' |
| Upper & Lower blazes w/scribes | Spruce 6" N08°E 2.5' | Cedar 6" S33°W 23.2' | Maple 5" S36°E 30.0' |
| | Upper & Lower blazes w/scribes | Upper & Lower blazes w/scribes | Upper & Lower blazes w/scribes |

Signed by Carl R. Johnson Date 1/28/92
 Surveyor's Michigan License No. 30083