

SURVEY & REMONUMENTATION

FEB 27 1998

SECTION OTTAWA COUNTY REMONUMENTATION LAND CORNER RECORDATION CERTIFICATE Filing Requirement of Act 74, Mich. P.A. 1970

For corners in

OTTAWA <small>(County)</small>	Located In:	Corner Code #	
1. Public Land Survey	T <u>5N</u> R <u>13W</u>	A-2 (W 1/4 corner of Section 6) Jamestown Twp	
2. Property Controlling in Section	S <u> </u> T <u> </u> R <u> </u>		
3. Miscellaneous Property in Sec.	S <u> </u> T <u> </u> R <u> </u>		

RECORDED
97 DEC -8 AM 11:41

Randy Schell
REGISTER OF DEEDS
OTTAWA COUNTY, MI

Register of Deeds Stamp & File Number

4. Lot No. _____, Recorded Plat _____
5. Private Claims _____

I, Randal J. Vugteveen, in a field survey on October 15, 1997 do hereby state that under requirements of P.A. 74, Michigan P.A. of 1970, the corner points mentioned in lines 1 and 2 above were in conformance with regulations and rules therefore as required in the current manual of survey instructions of the United States Department of the Interior, Bureau of Land Management or by a decree of a Court of Law and /or that the corner points mentioned in lines 3, 4 and 5 above were in conformance with the rules of the Michigan Board of Land Surveyors or by a Decree of a Court of Law, established, re-established, monumented, recovered, found as expressed below:

NOTE: Not more than 2 corners, all in the same town and range, may be recorded on this certificate.

1	A	B	C	D	E	F	G	H	I	J	K	L	M
2	6		5		4		3		2		1		
3													
4	7		8		9		10		11		12		
5													
6	18		17		16		15		14		13		
7													
8	19		20		21		22		23		24		
9													
10	30		29		28		27		26		25		
11													
12	31		32		33		34		35		36		
13													

A. Description of original monument and accessories and/or subsequent restoration:

A-2 Not set by G.L.O.
Liber 2 Page 437 (1974)

1" Sq. solid iron
24" Maple N-NW 70.24'
St. sign SW 21.80'
24" Twin Oak NE 64.02'

Liber 6 Page 22 (1989)
Rebar in mon box
Nail & tag E side 12" tree N24°W 50.11'
Nail & tag NE side power pole S30°W 109.47'
Nail & tag in W side guard post S30°W 47.90'
Nail & tag in NW side 28" tree N27°E 116.03'
PK in blacktop drive N75°W 54.19'

Capped Iron in monument box, N 47.35' (E 1/4 corner
Sec 1, T5N, R14W)

B. Description of corner evidence found and/or method applied in restoring or reestablishing corner:

A-2 Found rebar in monument box 0.03' E of Range Line and accepted position of corner as a careful perpetuation of the position of the original corner

PK nail in bit drive AZ 283° 54.00'
Zeeland Twp cor N 47.30'
Found nail E side power pole AZ 211° 109.30'

This position not established by original government surveyors. This monument is accepted as the best available evidence of the position of the corner.

Removed rebar, set 3/4" X 24" solid bar with Ottawa County Remon cap in monument box on Range line

PA. 345 OTTAWA COUNTY
PEER APPROVED 12/1/97

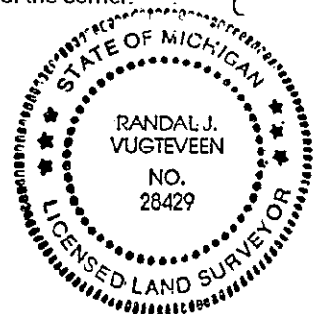
C. Description of monument for corner and accessories established to perpetuate locating the position of the corner:

A-2 3/4" X 24" solid bar with Ottawa County Remon cap in monument box NOTE: (see sketch on back)

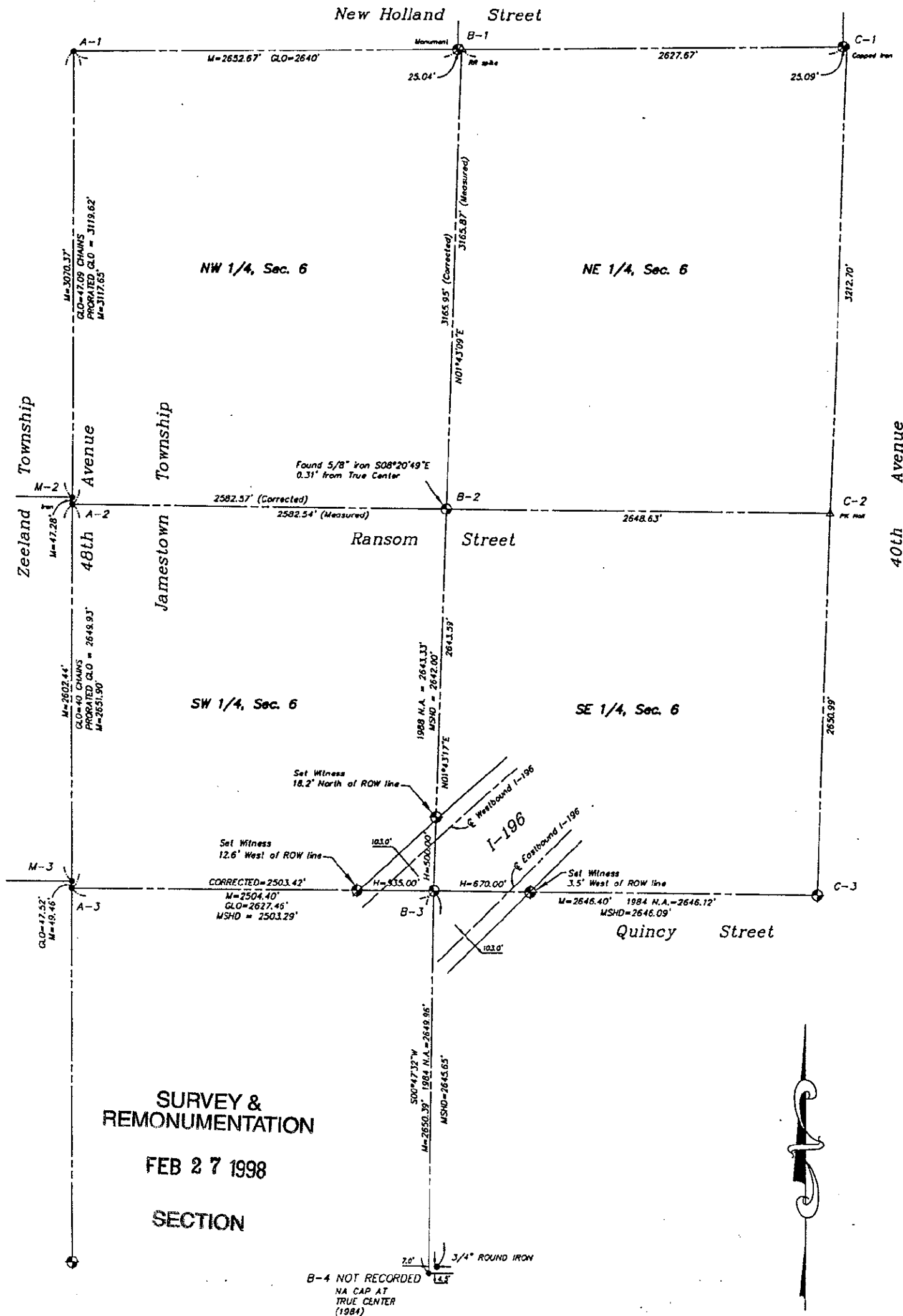
Set Ottawa County Remon tag & nail E side power pole AZ 207° 109.29'
Set Ottawa County Remon tag & nail NW side 12" Ash AZ 329° 50.39'
Found Ottawa County Remon tag & nail in W side 18" Ash AZ 9° 115.96'
Ottawa County Remon in monument box AZ 0° 47.30'
Centerline N-S bit road West 1.0'
On centerline bit road to East

Signed by *Randal J. Vugteveen*
Surveyor's Michigan License No. 28429

Date Dec. 1, 1997



\$ 11.00 CORNER
\$ 2.00 PHOTO



SURVEY & REMONUMENTATION
FEB 27 1998
SECTION



Scale: 1"=800'