

FEB 24 2000

OTTAWA COUNTY REMONUMENTATION

RECORDED

99 DEC -2 PM 1:13

SECTION

LAND CORNER RECORDATION CERTIFICATE
Filing Requirement of Act 74, Mich. P.A. 1970

Sam Roberts
REGISTER OF DEEDS
OTTAWA COUNTY, MI

For corners in
OTTAWA

(County)

Located in:

Corner Code #

1. Public Land Survey	T <u>5N</u> R <u>13W</u>	B-1 (N 1/4 Corner Sec. 6, Jamestown Twp.)
	T <u> </u> R <u> </u>	
	T <u> </u> R <u> </u>	
	T <u> </u> R <u> </u>	
2. Property Controlling in Section	S <u> </u> T <u> </u> R <u> </u>	
	S <u> </u> T <u> </u> R <u> </u>	
3. Miscellaneous Property in Sec.	S <u> </u> T <u> </u> R <u> </u>	
	S <u> </u> T <u> </u> R <u> </u>	

Register of Deeds Stamp & File Number

4. Lot No. _____, Recorded Plat _____
5. Private Claims _____

I, Randal J. Vugteveen, in a field survey on October 6, 1999 do hereby state that under requirements of P.A. 74, Michigan P.A. of 1970, the corner points mentioned in lines 1 and 2 above were in conformance with regulations and rules therefore as required in the current manual of survey instructions of the United States Department of the Interior, Bureau of Land Management or by a decree of a Court of Law and /or that the corner points mentioned in lines 3, 4 and 5 above were in conformance with the rules of the Michigan Board of Land Surveyors or by a Decree of a Court of Law; established, re-established, monumented, recovered, found as expressed below:

NOTE: Not more than 2 corners, all in the same town and range, may be recorded on this certificate.

A	B	C	D	E	F	G	H	I	J	K	L	M
1												
2	6	5	4	3	2	1						
3												
4	7	8	9	10	11	12						
5												
6	18	17	16	15	14	13						
7												
8	19	20	21	22	23	24						
9												
10	30	29	28	27	26	25						
11												
12	31	32	33	34	35	36						
13												

A. Description of original monument and accessories and/or subsequent restoration:

B-1
This corner was not set by GLO

From Consumers Power Co. Fee Map
(1965 by Donald Ratekin)
Found large bolt spike
S 1/4 corner Sec 31 West 25.02'
Nail in P. Pole NNE 13.33'
St. Sign N 18.88'
Nail in T. Pole SE 48.04'
P. Pole SW

From O.C.R.C. Map
Boat spike
CP Pole NNE 13.15'
CP Pole SSW 72.4'
MBT Pole SE 48.85'
RR sign WNW 56.2'
(Continued on Back)

B. Description of corner evidence found and/or method applied in restoring or reestablishing corner:

B-1 Found RR spike in blacktop 0.06' South of Town line and boat spike below

Found Nail & MSHD Tag S. side P. Pole S76°W 91.25'
Found PK Nail in N side P. Pole S66°E 77.55'
Center of RR Track (Perpendicular to track) NW 50.55'
Found Ottawa County Remon Cap West 25.00'

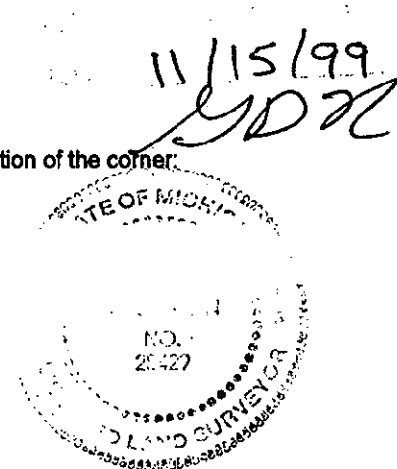
This position not established by original government surveyors. Accepted RR spike with underlying boat spike as the best available evidence of the position of the corner.

Replaced RR spike and underlying boat spike with a 3/4" X 24" Steel Bar with Remon Cap in Monument Box on Township Line

C. Description of monument for corner and accessories established to perpetuate locating the position of the corner:

B-1 3/4" X 24" Steel Bar with Remon Cap in Monument Box on Township Line

Set Nail & Remon Tag in S'ly side Power Pole N10°E 31.05'
Set Nail & Remon Tag in S'ly side Power Pole N55°E 147.12'
Set Nail & Remon Tag in E side Power Pole S68°E 77.56'
Set Nail & Remon Tag in S'ly side Power Pole S73°W 91.30'
Centerline W. Bound Chicago Drive S25°E 19'
Centerline E & W Road 5' South
Iron Bar with Remon Cap in Monument Box (B-13 Georgetown Twp) West 25.00'



\$11.00 CORNER
Receipt #64945

Signed by *Randal J. Vugteveen*
Surveyor's Michigan License No. 28429

Date OCTOBER 27, 1999

A- Continued
 B-1 Liber 2, Page 173
 June 1973, W & W
 "T" Iron Found
 NW Corner House S65°W 108.17'
 NE Corner House S50°E 120.90'
 MBT Pole S10°W 25.40'
 CP Pole N10°E 26.67'
 Note: LCRC in error, corner witnessed is L-1 Jamestown Twp.

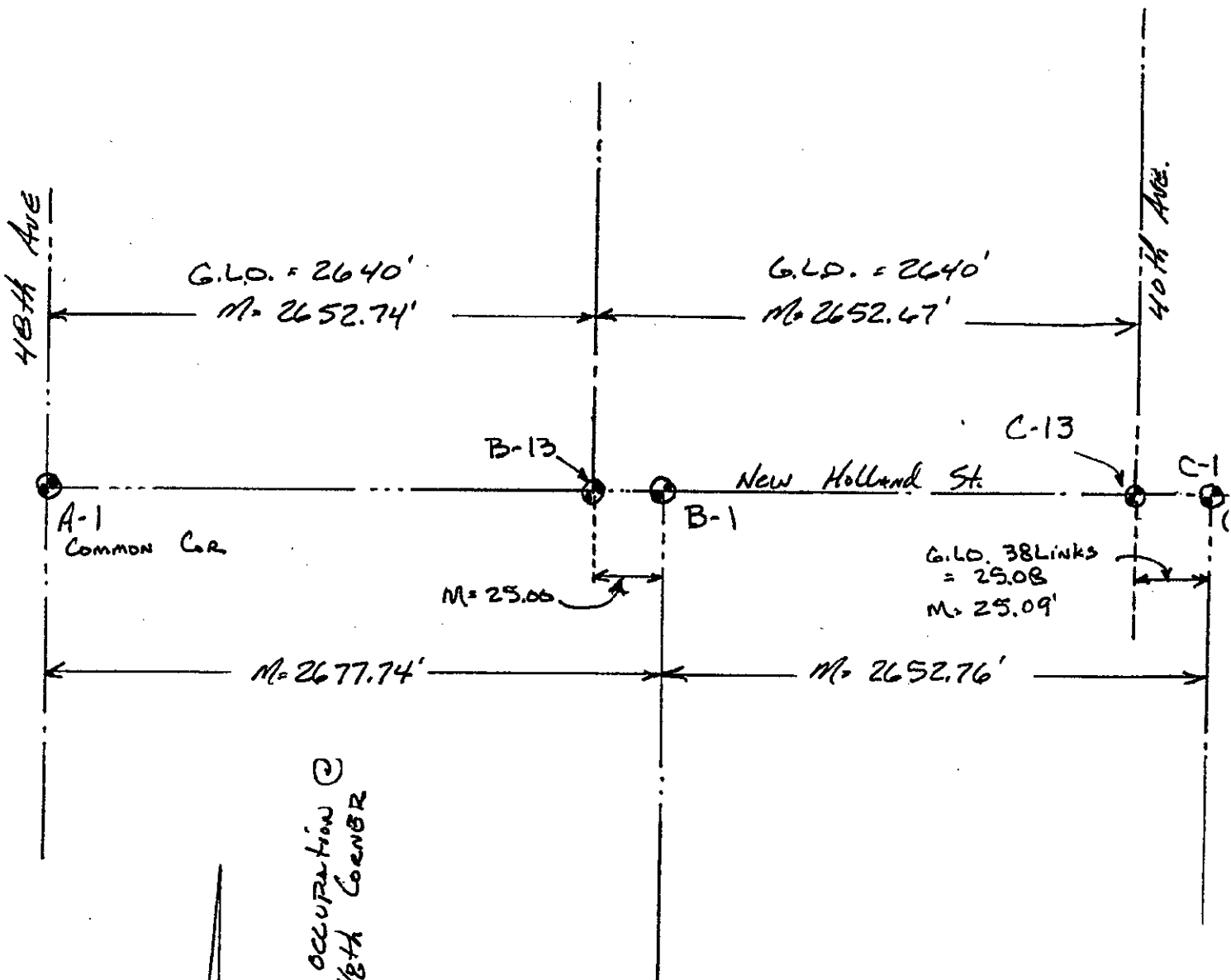
B-1 from Exxel Survey
 Jan 1984
 RR Spike
 PK in W'ly side Power Pole ESE 77.59'
 PK in S side RR crossing sign WNW 55.30'
 MSHD Nail in SE side T. Pole NE 42.62'
 Centerline RR Track (Perpendicular to track) N'ly 50.49'

FEB 24 2000

SECTION

B-1 from Nederveld Associates
 Survey Notes November 1980
 Found Boat Spike
 Nail & MSHD Tag in S Side Telephone Pole NE 42.62'
 Nail & MSHD Tag in S side Power Pole WSW 91.27'
 S ¼ corner Section 31, T6N, R13W 25.04'
 Found PK in Power Pole ESE 77.58'

Section 31, Georgetown Twp.



Section 6, Jamestown Twp.