

SURVEY & REMONUMENTATION

FEB 27 1998

OTTAWA COUNTY REMONUMENTATION LAND CORNER RECORDATION CERTIFICATE Filing Requirement of Act 74, Mich. P.A. 1970

For corners in **SECTION**
OTTAWA

(County)	Located In:	Corner Code #
1. Public Land Survey	T <u>5</u> N R <u>13</u> W	B-3 (N 1/4 cor Sec 7) Jamestown Twp
	T ___ R ___	___
	T ___ R ___	___
	T ___ R ___	___
2. Property Controlling in Section	S ___ T ___ R ___	___
	S ___ T ___ R ___	___
3. Miscellaneous Property in Sec.	S ___ T ___ R ___	___
	S ___ T ___ R ___	___

RECORDED
97 DEC -8 AM 11:38

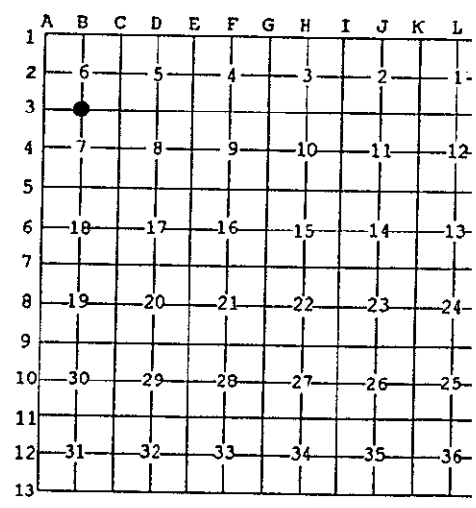
Doug Schultz
REGISTER OF DEEDS
OTTAWA COUNTY, MI

Register of Deeds Stamp & File Number

4. Lot No. _____, Recorded Plat _____
5. Private Claims _____

I, Randal J. Vugteveen, in a field survey on October 16, 1997 do hereby state that under requirements of P.A. 74, Michigan P.A. of 1970, the corner points mentioned in lines 1 and 2 above were in conformance with regulations and rules therefore as required in the current manual of survey instructions of the United States Department of the Interior, Bureau of Land Management or by a decree of a Court of Law and /or that the corner points mentioned in lines 3, 4 and 5 above were in conformance with the rules of the Michigan Board of Land Surveyors or by a Decree of a Court of Law; established, re-established, monumented, recovered, found as expressed below:

NOTE: Not more than 2 corners, all in the same town and range, may be recorded on this certificate.



A. Description of original monument and accessories and/or subsequent restoration:

B-3 Quarter corner common to Sections 6 and 7
G.L.O. 1831
Lucious Lyon
Corner was 7" Sugar Maple
Was not witnessed

B. Description of corner evidence found and/or method applied in restoring or reestablishing corner:

B-3 Found cast iron monument in monument box

1965 M.S.H.D. distance to center Sec.6 = 2642.00'	Historical ties from B-3 to A-3
1997 N.A meas. to center Sec.6 = 2643.59'	GLO = 39.81' Chains = 2627.46'
	1965 M.S.H.D. = 2503.29'
1965 M.S.H.D. distance to center Sec. 7 2645.65'	1997 Nederveld Assoc. measure = 2504.40'
1997 N.A. meas. to center Sec. 7 2650.39'	Historical ties from B-3 to C-3
	GLO = 40.00' Chains = 2640.00'
	1965 M.S.H.D. = 2646.09'
	1997 Nederveld Assoc. measure = 2646.40'

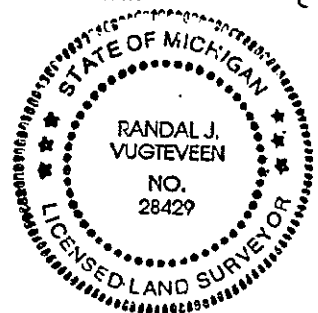
Accepted position of cast iron monument as a careful perpetuation of the position of the original corner

PA. 345 OTTAWA COUNTY
PEER APPROVED 12/1/97

C. Description of monument for corner and accessories established to perpetuate locating the position of the corner:

B-3 Cast Iron Monument NOTE: (see sketch on back)

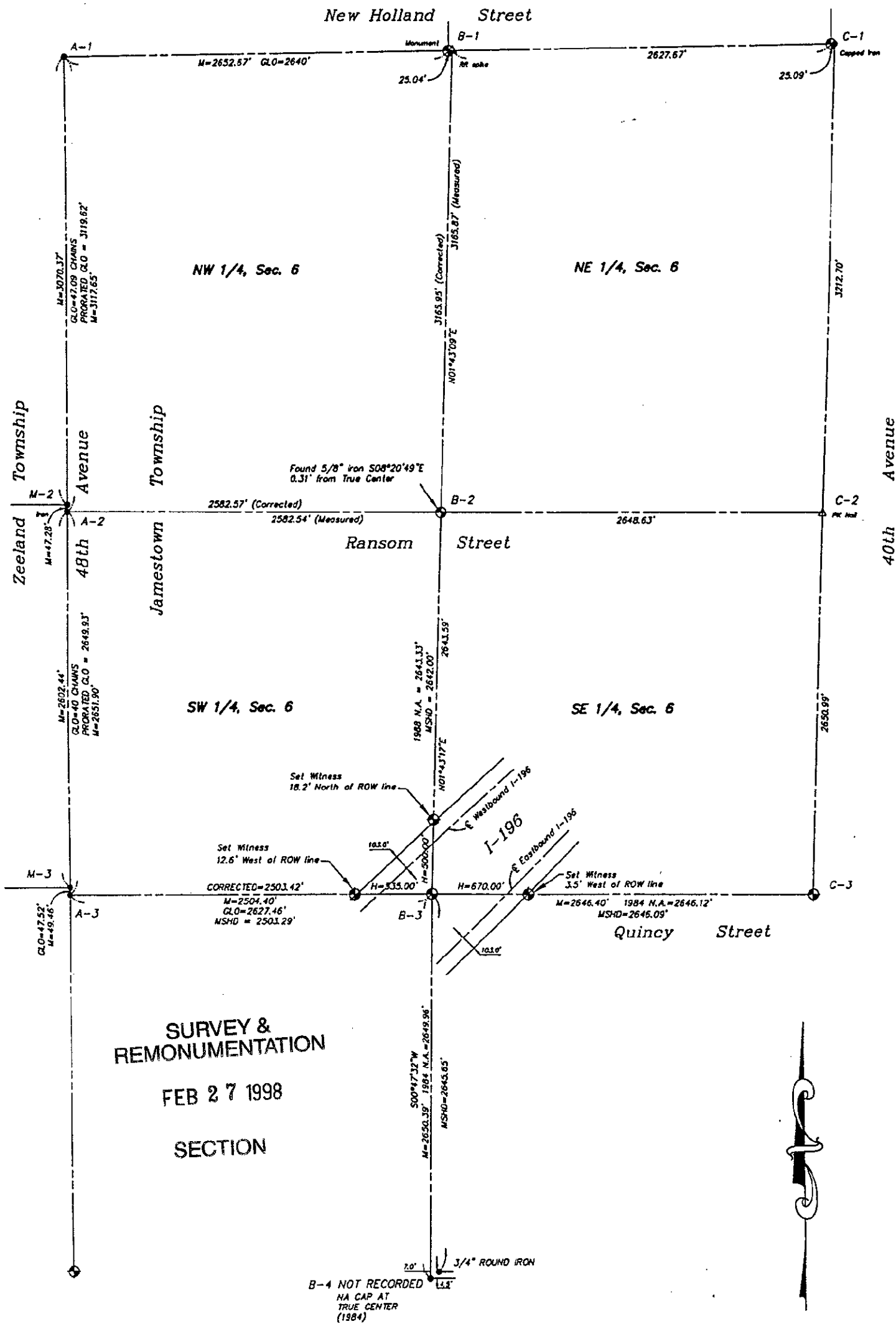
- Set Ottawa County Remon tag & nail N side 11" triple poplar AZ 250° 189.92'
- Set Ottawa County Remon tag & nail N side 4" Twin Poplar AZ 172° 27.78'
- Set Ottawa County Remon tag & nail N side 12" Twin Poplar AZ 43° 156.80'
- Set Ottawa County Remon tag & nail N side 3" Twin Poplar AZ 327° 111.65'
- Centerline West bound I-196 AZ 318° 246.2'
- Centerline East bound I-196 AZ 136° 366.5'



2.00 PHOTO

Signed by *Randal J. Vugteveen*
Surveyor's Michigan License No. 28429

Date Dec 1, 1997



SURVEY & REMONUMENTATION
FEB 27 1998
SECTION



Scale: 1"=800'