

FEB 24 2000

OTTAWA COUNTY REMONUMENTATION
LAND CORNER RECORDATION CERTIFICATE
Filing Requirement of Act 74, Mich. P.A. 1970

RECORDED
99 DEC -2 PM 1:13

Randy Sublett
REGISTER OF DEEDS
OTTAWA COUNTY MI

For corners in SECTION
OTTAWA

Located In:	Corner Code #
(County)	
1. Public Land Survey	T 5N R 13W C-1 NW cor Sec 5, Jamestown Township
2. Property Controlling in Section	S T R
3. Miscellaneous Property in Sec.	S T R

Register of Deeds Stamp & File Number

4. Lot No. _____, Recorded Plat _____
5. Private Claims _____

Randal J. Vugteveen, in a field survey on October 18, 1999 do hereby state that under requirements of P.A. 74, Michigan P.A. of 1970, the corner points mentioned in lines 1 and 2 above were in conformance with regulations and rules therefore as required in the current manual of survey instructions of the United States Department of the Interior, Bureau of Land Management or by a decree of a Court of Law and /or that the corner points mentioned in lines 3, 4 and 5 above were in conformance with the rules of the Michigan Board of Land Surveyors or by a Decree of a Court of Law; established, re-established, monumented, recovered, found as expressed below.

NOTE: Not more than 2 corners, all in the same town and range, may be recorded on this certificate.

A	B	C	D	E	F	G	H	I	J	K	L	M
1												
2	6	5	4	3	2	1						
3												
4	7	8	9	10	11	12						
5												
6	18	17	16	15	14	13						
7												
8	19	20	21	22	23	24						
9												
10	30	29	28	27	26	25						
11												
12	31	32	33	34	35	36						
13												

A. Description of original monument and accessories and/or subsequent restoration:

C-1 Set by GLO August 1831, Lucious Lyon
Set Post 38 Links East of Post on N. Boundary
20" Elm S43 1/2°E 29 Links
9" Sugar S76°W 34 Links

C-1 LCRC Liber 2, Page 215
Feb 1973, MVK
Found 1" Round Iron
Nail in P. Pole SSE 28.34'
Nail in P. Pole SW 60.70'
Nail in P. Pole NW 80.44'
Nail in 46" Maple N 60.16'
Iron to West 25.1'

LCRC Liber 6, Page 20 (Dec 1989, Bueche)
Iron in Mon Box
SE cor back of Catch Basin S55°E 27.93'
NE cor back of Catch Basin N55°E 27.51'
S corner back of Catch Basin S5°W 26.30'
Corner of conc, S/L drive & E/L Walk N5°E 58.04'
PK in Bit E 35.64'
Iron in Mon Box (C-13, 6-13 West 25.11')

B. Description of corner evidence found and/or method applied in restoring or reestablishing corner:

C-1 Found Iron w/ Cap #13027 in Mon Box
SE corner back of Catch Basin S55°E 28.02'
NE corner back of Catch Basin N55°E 27.51'
S Corner back of Catch Basin S5°W 26.34'
Corner of Conc. at S line drive & E line walk N5°E 58.00'
Found Remon Rod and Cap in Mon. Box West 25.10'

Accepted found iron with Cap #13027 as a careful and faithful perpetuation of the position of the original corner.

Removed Iron with Cap #13027 and replaced with a 3/4" X 24" Steel Bar with Remon Cap on Township line 25.10' East of C-13 Georgetown Twp Corner

11/15/99
YDN

C. Description of monument for corner and accessories established to perpetuate locating the position of the corner:

C-1 3/4" X 24" Steel Bar with Remon Cap on Township line 25.10' East of C-13 Georgetown Twp Corner

Set Nail & Remon Tag in W side P. Pole S12°E 28.70'
Set Nail & Remon Tag in N side P. Pole S63°W 60.41'
Found Nail & Remon Tag in in E side P. Pole N31°W 80.38'
SW corner Brick House N37°E 96.82'
Centerline "X" of Roads West 25.0'



\$11.00 CORNER
Receipt #64945

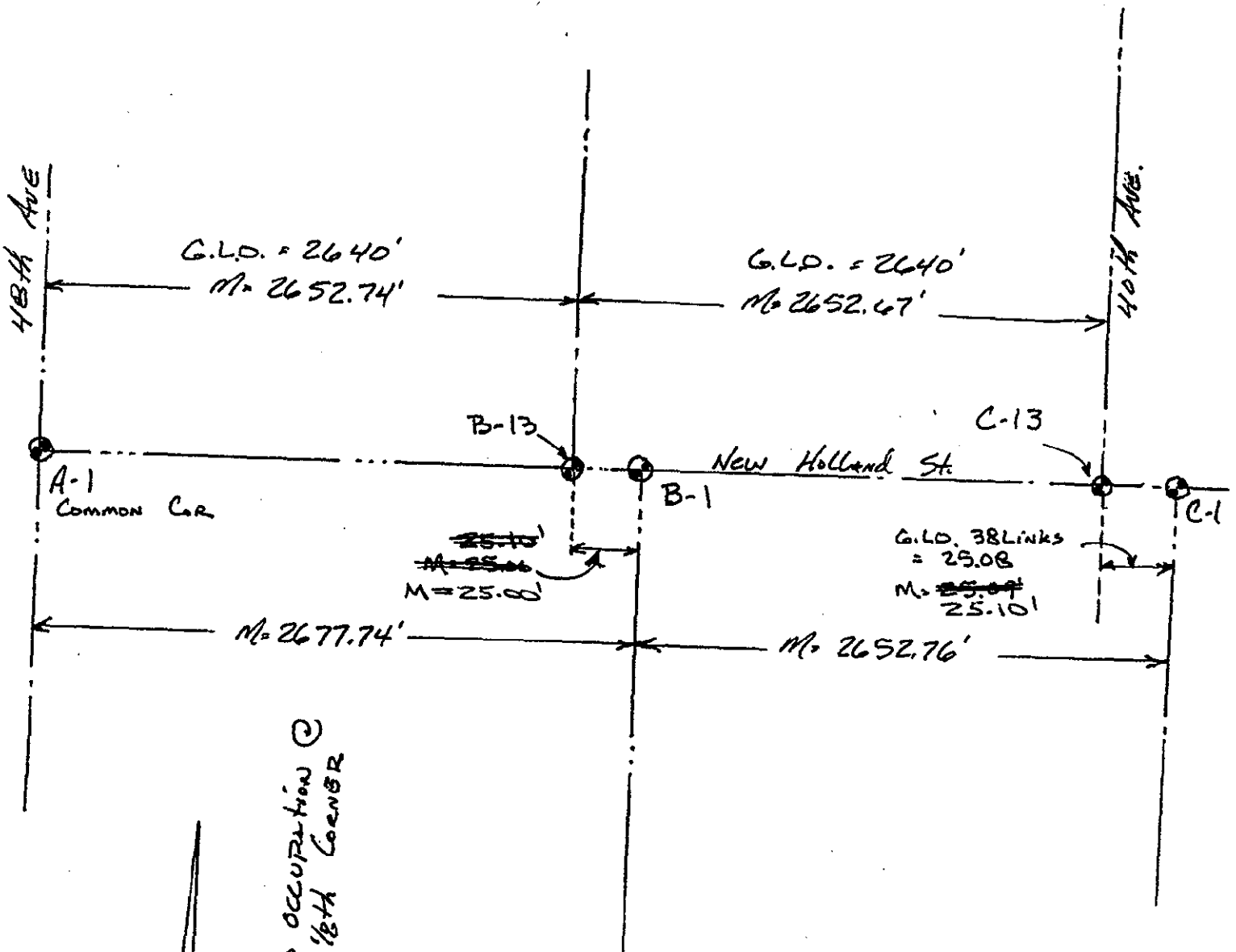
Signed by *Randal J. Vugteveen*
Surveyor's Michigan License No. 28429

Date OCTOBER 27, 1999

FEB 24 2000

SECTION

Section 31, Georgetown Twp.



Section 6, Jamestown Twp.