

FEB 24 2000

OTTAWA COUNTY REMONUMENTATION
LAND CORNER RECORDATION CERTIFICATE
Filing Requirement of Act 74, Mich. P.A. 1970

RECORDED
99 DEC -2 PM 1:13

SECTION

For corners in

OTTAWA

(County)

Located In:

Corner Code #

- 1. Public Land Survey T5N R 13W D-1 N 1/4 cor. Sec.
T R 5. Jamestown Twp
- 2. Property Controlling in Section S T R
- 3. Miscellaneous Property in Sec. S T R

Gary Schell
REGISTER OF DEEDS
OTTAWA COUNTY, MI

Register of Deeds Stamp & File Number

- 4. Lot No. _____, Recorded Plat _____
- 5. Private Claims _____

I, Randal J. Vugleveen, in a field survey on October 6, 19 99 do hereby state that under requirements of P.A. 74, Michigan P.A. of 1970, the corner points mentioned in lines 1 and 2 above were in conformance with regulations and rules therefore as required in the current manual of survey instructions of the United States Department of the Interior, Bureau of Land Management or by a decree of a Court of Law and /or that the corner points mentioned in lines 3, 4 and 5 above were in conformance with the rules of the Michigan Board of Land Surveyors or by a Decree of a Court of Law; established, re-established, monumented, recovered, found as expressed below:

NOTE: Not more than 2 corners, all in the same town and range, may be recorded on this certificate.

	A	B	C	D	E	F	G	H	I	J	K	L	M
1				▲									
2	6		5		4		3		2			1	
3													
4	7		8		9		10		11			12	
5													
6	18		17		16		15		14			13	
7													
8	19		20		21		22		23			24	
9													
10	30		29		28		27		26			25	
11													
12	31		32		33		34		35			36	
13													

A. Description of original monument and accessories and/or subsequent restoration:

D-1
This corner was not set by GLO

D-1 LCRC Liber 2, Page 215 (Feb 1973 MVK)
Found 1" Rd Iron
Nail in Pole NNE 34.81'
Nail in Pole NW 58.33'
Nail in Pole SW 85.12'

D-1 LCRC Liber 4, Page 4 (Nov. 1979 Exxel)
1/2" Capped Rerod on S. line Sec 32, T6N, R13W
PK in guy pole NE 51.17'
PK in guy pole NW 67.32'
PK in P. Pole SW 84.97
NE corner hse SW 101.04'
S 1/4 corner Sec 32, T6N, R13W West 12.55'
Face Conc. Curb S 1.65'

B. Description of corner evidence found and/or method applied in restoring or reestablishing corner:

D-1 Found 1/2" Capped (unlegible) Rebar

Fd PK in Guy Pole N37°E 51.00'
Fd PK in NE side Guy Pole N47°W 67.53'
NE corner hse S45°W 100.90'
S 1/4 corner Sec 32, D-13 N90°W 12.55'
Face Conc. Curb S0°E 1.65'

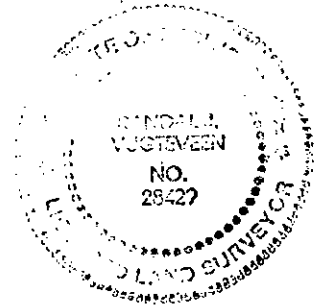
This position not established by original government surveyors. Accepted 1/2" Capped Rebar as the best available evidence of the position of the corner

Replaced 1/2" Capped Rebar with 3/4" X 24" long solid bar with Remon Cap in Monument Box on Township Line

C. Description of monument for corner and accessories established to perpetuate locating the position of the corner:

D-1 3/4" X 24" long solid bar with Remon Cap in Monument Box on Township line

Fnd Nail & Remon Tag in SW side P. Pole N45°W 67.49'
Fnd Nail & Remon Tag in W side P. Pole N40°E 50.85'
NE corner Brick House S47°W 100.83'
NW corner Brick House S45°E 101.28'
Ottawa County Remon Cap West 12.55'
On tree row to South 10' South of centerline



\$11.00 CORNER
Receipt #64945

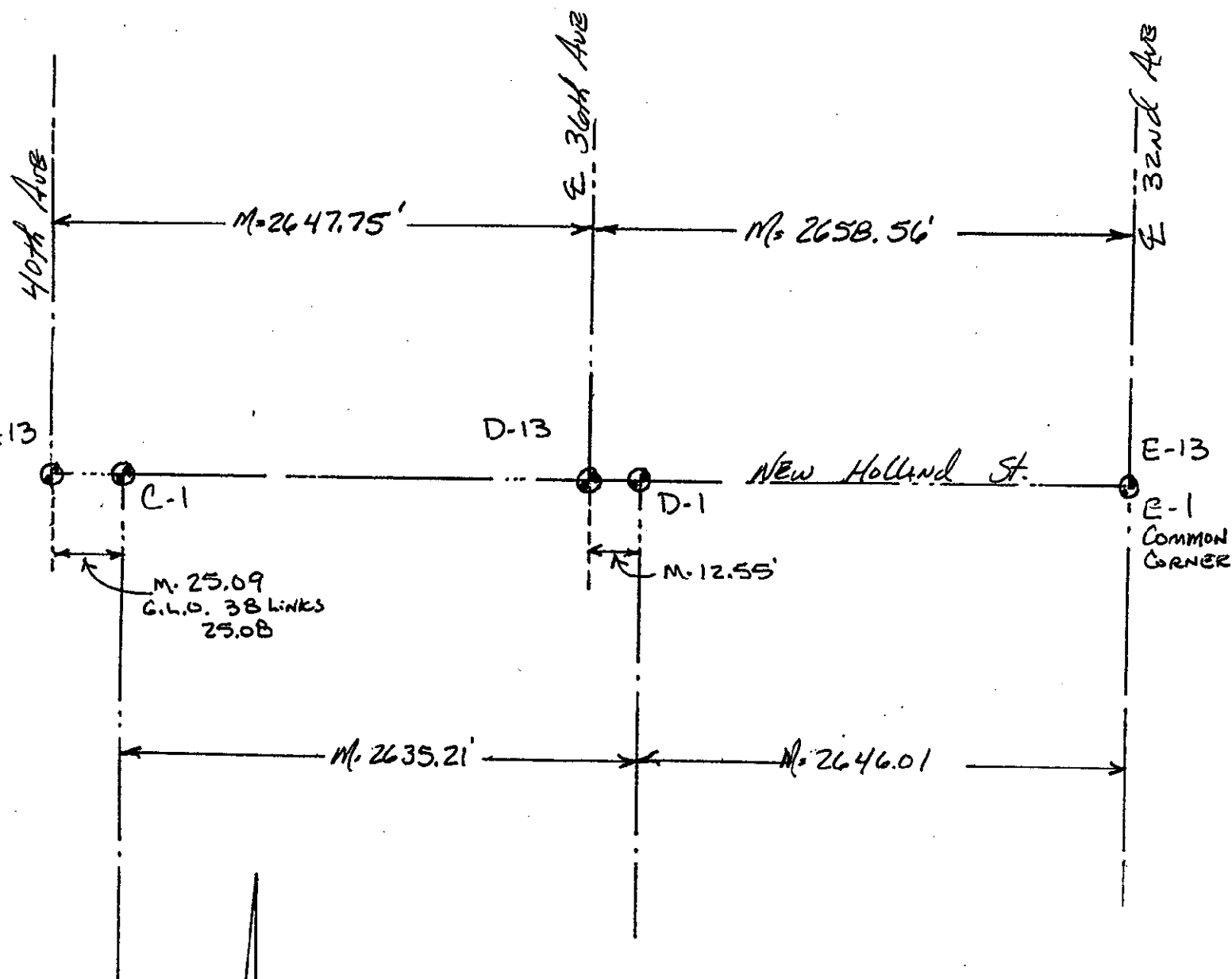
Signed by *Randal J. Vugleveen*
Surveyor's Michigan License No. 28429

Date October 27, 1999

FEB 24 2000

SECTION

Section 32, Georgetown Twp.



Section 5, Jamestown Twp.