

RF

FEB 24 2000

RECORDED

99 JUL 30 PM 12: 26

SECTION

OTTAWA COUNTY REMONUMENTATION  
LAND CORNER RECORDATION CERTIFICATE  
Filing Requirement of Act 74, Mich. P.A. 1970

*Dan Schultz*  
REGISTER OF DEEDS  
OTTAWA COUNTY, MI

For corners in

OTTAWA

(County)

Located in:

Corner Code #

- 1. Public Land Survey T 5N R 13W F-1 N 1/4 corner  
T     R     Sec 4, Jamestown  
T     R     Township      
T     R
- 2. Property Controlling S     T     R     COMMON  
in Section S     T     R     CORNER
- 3. Miscellaneous S     T     R          
Property in Sec. S     T     R

Register of Deeds Stamp & File Number

- 4. Lot No. \_\_\_\_\_, Recorded Plat \_\_\_\_\_
- 5. Private Claims \_\_\_\_\_

	A	B	C	D	E	F	G	H	I	J	K	L	M
1													
2	6		5		4		3		2		1		
3													
4	7		8		9		10		11		12		
5													
6	18		17		16		15		14		13		
7													
8	19		20		21		22		23		24		
9													
10	30		29		28		27		26		25		
11													
12	31		32		33		34		35		36		
13													

I, Randal J. Vugteveen, in a field survey on July 8, 19 99 do hereby state that under requirements of P.A. 74, Michigan P.A. of 1970, the corner points mentioned in lines 1 and 2 above were in conformance with regulations and rules therefore as required in the current manual of survey instructions of the United States Department of the Interior, Bureau of Land Management or by a decree of a Court of Law and for that the corner points mentioned in lines 3, 4 and 5 above were in conformance with the rules of the Michigan Board of Land Surveyors or by a Decree of a Court of Law; established, re-established, monumented, recovered, found as expressed below:

NOTE: Not more than 2 corners, all in the same town and range, may be recorded on this certificate.

A. Description of original monument and accessories and/or subsequent restoration:

F-1 Corner was not set by GLO

F-1 A.V. Peck (1899) NW corner Sec 4-5-13  
To N 1/4 Cor Sec 4-5-13 = 40.11 Chains = 2647.26'  
Called Common Corners

(Continued on Back)

F-1 MSHD Witness 1968 (Russel Roon)  
Found 3/4" Pipe/replaced with 1/2" X 30" Galvanized Rod  
S31°E 50.08' 20" Maple  
S60°E 23.63' 23" Cherry  
S10°W 21.85' 18" Maple  
S52°W 50.54' 22" Maple  
Common Corner to S 1/4 corner Section 33-6-13

F-1 LCRC 1983  
Nederveld  
5/8" Rerod per prev. witness  
MSHD Tag on side 20" Maple 50.09'  
MSHD Tag on side 23" W. Cherry SE 23.68'  
MSHD Tag on side 18" Maple SSW 21.87'  
"T" Iron 0.40'S & 1.2'E

B. Description of corner evidence found and/or method applied in restoring or reestablishing corner:

F-1 Found Bar with Remon Cap in Mon Box

NW cor Section 4-5-13 West 2647.66' (Matches P & N distance in Liber 6, Page 27)  
Found Nail NE side 24" Maple S54°E 102.08'  
SW corner (Brick Face) garage N12°E 65.73'  
On line with old fence to South

This position not established by original government surveyors. This monument is accepted as the best available evidence of the position of the corner.

REGISTER OF DEEDS OTTAWA COUNTY

RECORDED JULY 12, 1999

C. Description of monument for corner and accessories established to perpetuate locating the position of the corner:

Bar with Ottawa County Remon Cap in Mon Box (See sketch on back)

SE corner Brick House Az 339° 70.89'  
SW corner Brick House Az 12° 65.73'  
SE corner Brick House Az 48° 94.19'  
Found Nail and Ottawa County Remon Tag NE side 18" Maple Az 126° 101.87'  
Found Nail and Ottawa County Remon Tag W side 24" Beech Az 186° 66.96'  
On centerline E & W road  
Corner is common to F-13 Georgetown



\$11.00 CORNER  
Receipt #52399

Signed by *Randal J. Vugteveen*  
Surveyor's Michigan License No. 28429

Date July 29, 1999

A. Continued

F-1 LCRC Liber 6, Page 37

P & N Nov 1989

1/2" ReRod on Centerline Bit Road

SW 112.19' 16D Nail S side 8" Locust

SE 102.04' 40D Nail W side 24" Maple

NE 66.10' SW corner Conc Fnd Hse #2789

NW 79.95' SE corner Brick to Hse

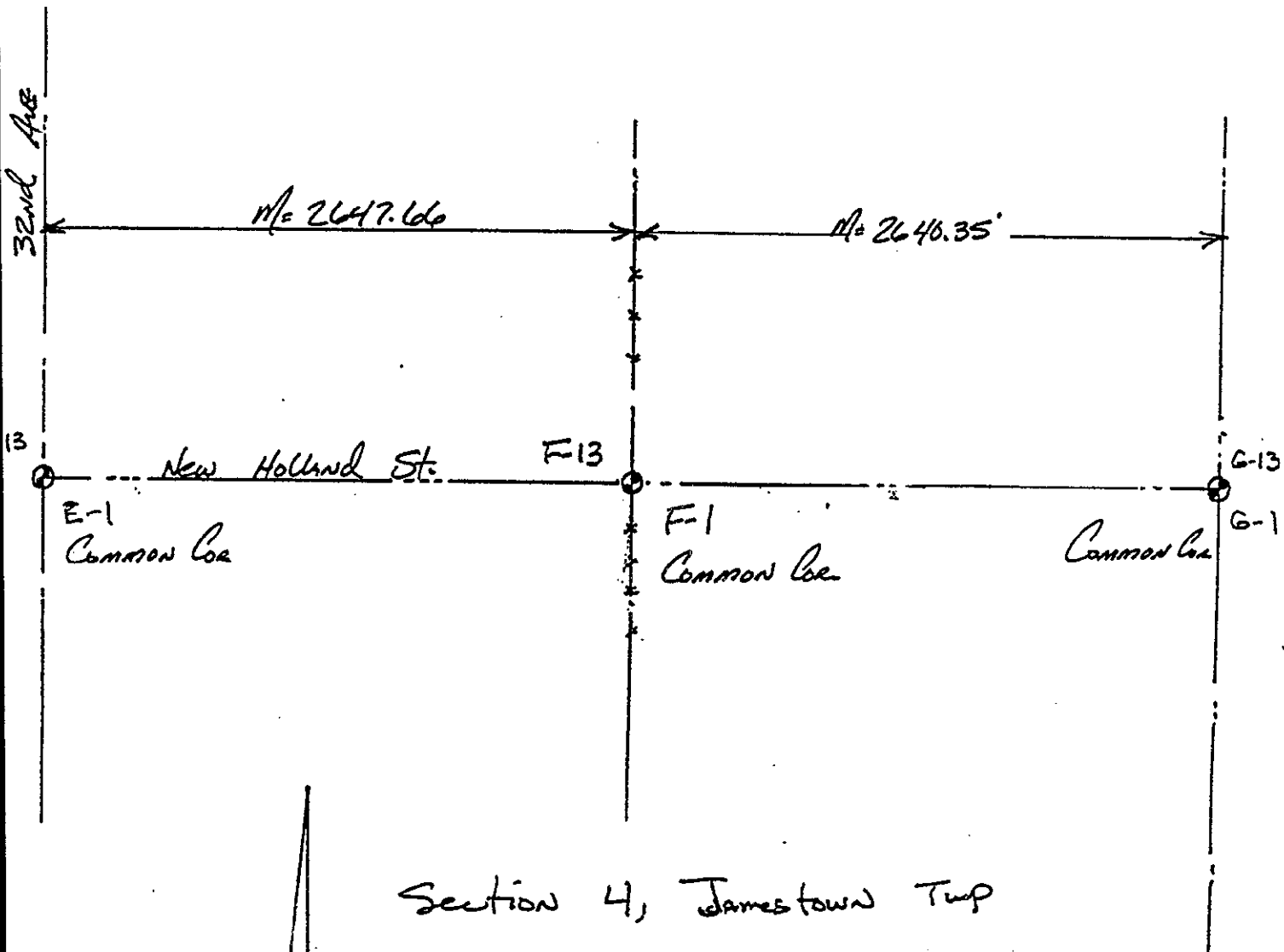
NW corner of Section 4, West 2647.66'

SURVEY &  
RECORDS

FEB 24 2000

SECTION

Section 33, Georgetown Twp



Section 4, Jamestown Twp