

COMMISSION

OTTAWA COUNTY REMONUMENTATION  
LAND CORNER RECORDATION CERTIFICATE  
Filing Requirement of Act 74, Mich. P.A. 1970

RECORDED

93 DEC 15 AM 9:30

*Rodney D. Unema*  
REGISTER OF DEEDS  
OTTAWA COUNTY, MI

For corners in  
Ottawa

(County)

Located In: Corner Code ##  
Jamestown Township

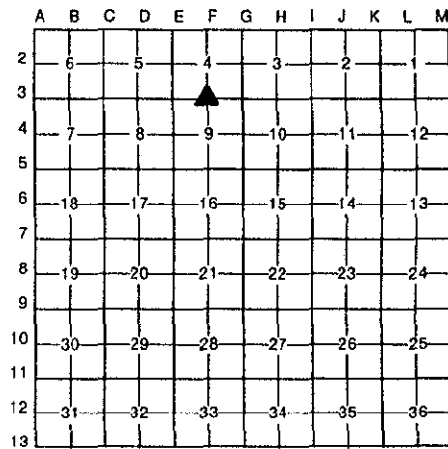
1. Public Land Survey	T 5N R 13W	F-3
	T _____ R _____	_____
	T _____ R _____	_____
	T _____ R _____	_____
2. Property Controlling in Section	S _____ T _____ R _____	_____
	S _____ T _____ R _____	_____
3. Miscellaneous Property in Sec.	S _____ T _____ R _____	_____
	S _____ T _____ R _____	_____

Register of Deeds Stamp & File Number

4. Lot No. \_\_\_\_\_, Recorded Plat \_\_\_\_\_  
5. Private Claims \_\_\_\_\_

I, Rodney D. Unema, in a field survey on December 4, 19 93, do hereby certify that under requirements of P.A. 74, Michigan P.A. of 1970, the corner points mentioned in lines 1 and 2 above were in conformance with regulations and rules therefore as required in the current manual of survey instructions of the United States Department of the Interior, Bureau of Land Management or by a decree of a Court of Law and/or that the corner points mentioned in lines 3, 4 and 5 above were in conformance with the rules of the Michigan Board of Land Surveyors or by a Decree of a Court of Law; established, re-established, monumented, re-monumented, recovered, found as expressed below:

NOTE: Not more than 4 corners, all in the same town and range, may be recorded on this certificate.



A. Description of original monument and accessories and/or subsequent restoration:

F-3 1/4 Corner Between Sections 4 and 9

L.C.R.C., Liber 6, Pg. 35 (Mar 90)

Re-rod over C.I. Mon.

PK E sde PP	N	34.07'
PK NW sde 12" Maple	NE	64.98'
16-D in N sde 3" Elm	SE	74.87'
W edge of 1" beam post to sign #990 for gas main	NW	46.40'

L.C.R.C., Liber 4, Pg. 343 (Sept 82)

Cast iron Mon.

Power Pole	NNE	34.09'
SW cor porch	NE	105.32'
Telephone pole	SE	59.45'

L.C.R.C., Liber 2, Pg. 431 (Feb 74)

1/2" iron

MSHD tag in P.Pole	NNE	34.09
MSHD tag in T.Pole	SE	59.45
SW cor porch fndn	NE	105.32
Iron on C/L grave 1 Rd. on line w/ N-S fence line		

B. Description of corner evidence found and/or method applied in restoring or reestablishing corner:

F-3 Found Capped 1/2" Iron 1' N of C/L of Quincy St. in line with tree row to North

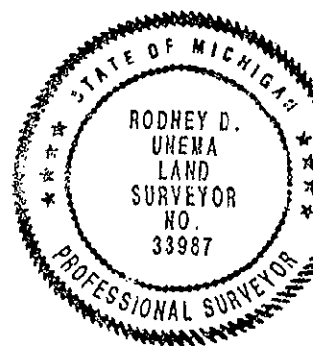
Found PK nail E sde P.Pole	N 5°E	34.03'
Found W edge I Beam post to sign #990 for gas main	N45°W	46.35'
Found SW cor porch fndn.	N50°E	105.51'

Accepted as a careful perpetuation of the position of the original corner, and replaced 1/2" iron with Std. O.C. Cap on 3/4" dia. iron bar in new monument box over existing cast iron monument.

C. Description of monument for corner and accessories established to perpetuate locating the position of the corner:

F-3 1/4 corner between Sections 4 and 9  
Std. O.C. Cap on 3/4" iron bar in Mon. Box  
in line with tree row to North

O.C. nail & tag in E sde P.Pole	N 5°E	34.05'
O.C. nail & tag in NE sde P.Pole	S50°E	93.12'
W edge I beam post to sign #990 for gas main	N45°W	46.35'
Found SW cor porch fndn.	N50°E	105.51'
NE cor brick gar. cor. #2823	S50°E	133.40'



Signed by

*Rodney D. Unema*

Date

December 6, 1993

Surveyor's Michigan License No. 33987