

1893

COMMISSION

OTTAWA COUNTY REMONUMENTATION
LAND CORNER RECORDATION CERTIFICATE
Filing Requirement of Act 74, Mich. P.A. 1970

RECORDED

93 DEC 15 AM 9:30

Rodney D. Unema
REGISTER OF DEEDS
OTTAWA COUNTY, MI

For corners in

Ottawa

(County)

Located In:

Corner Code #

Jamestown Township

1. Public Land Survey

T 5N R 13W

G-3

T _____ R _____

T _____ R _____

T _____ R _____

2. Property Controlling
in Section

S _____ T _____ R _____

S _____ T _____ R _____

3. Miscellaneous
Property in Sec.

S _____ T _____ R _____

S _____ T _____ R _____

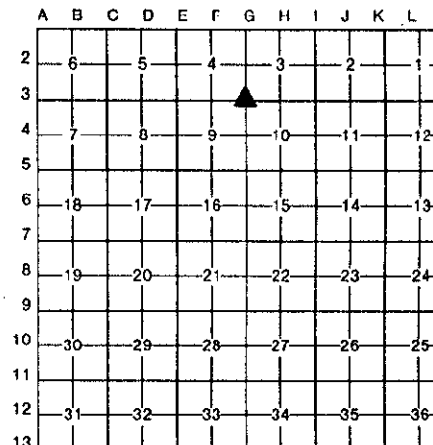
4. Lot No. _____, Recorded Plat _____

5. Private Claims _____

Register of Deeds Stamp & File Number

I, Rodney D. Unema, in a field survey on December 4, 19 93, do hereby certify that under requirements of P.A. 74, Michigan P.A. of 1970, the corner points mentioned in lines 1 and 2 above were in conformance with regulations and rules therefore as required in the current manual of survey instructions of the United States Department of the Interior, Bureau of Land Management or by a decree of a Court of Law and/or that the corner points mentioned in lines 3, 4 and 5 above were in conformance with the rules of the Michigan Board of Land Surveyors or by a Decree of a Court of Law; established, re-established, monumented, re-monumented, recovered, found as expressed below:

NOTE: Not more than 4 corners, all in the same town and range, may be recorded on this certificate.



A. Description of original monument and accessories and/or subsequent restoration:

G-3 Corner Common to Sections 3, 4, 9 and 10

L.C.R.C., Liber 6, Pg. 33 (Mar 90)

L.C.R.C., Liber 5, Pg. 86 (Dec 83)

L.C.R.C., Liber 2, Page 431 (Feb 74)

Cast iron Mon.
16-D nail E sde PP NW 40.32'
"X" on W sde street sign ENE 161.61'
PK on approx C/L of 24th St. SE 46.83'
C/L of 24th & Quincy street S 100.00'

Set Cast iron Mon.
Center of Tele ped. SW 67.45'
Power Pole NNW 40.48'
Street sign SE 46.80'

PK in P.Pole NNW 40.48'
PK in P.Pole ENE 161.67'
Nail in 14" Sycamore SSW 142.35'
Face of st. sign SE 57.98'

B. Description of corner evidence found and/or method applied in restoring or reestablishing corner:

G-3 Found O.C. Cast Iron Mon. at intersection of 24th Ave. and Quincy St.
1 1/2" below B.T. surface

Found nail in E'ly sde PP N15°W 40.29'
Found "X" on street sign S45°E 46.87'
Found PK in N sde PP N75°E 161.73'

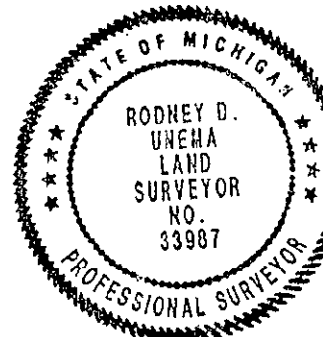
Accepted as a careful perpetuation of the position of the original corner.

C. Description of monument for corner and accessories established to perpetuate locating the position of the corner:

G-3 Corner common to Sections 3, 4, 9 and 10

O.C. Cast Iron Mon. at intersection of 24th Ave. and Quincy St.

Set nail & O.C. tag in E'ly sde of P.Pole N15°W 40.54'
Set nail & O.C. tag in S'ly sde of P.Pole N75°E 161.77'
Set nail & O.C. tag in S'ly sde 24" Maple N60°W 149.74'
Set nail & O.C. tag in E'ly sde P.Pole S10°W 199.92'
On C/L of 24th Avenue to South
C/L of Quincy South 3.0'



Signed by Rodney D. Unema

Date December 6, 1993

Surveyor's Michigan License No. 33987