

SURVEY & REMONUMENTATION

APR 25 1995

OTTAWA COUNTY REMONUMENTATION
LAND CORNER RECORDATION CERTIFICATE
 Filing Requirement of Act 74, Mich. P.A. 1970

RECORDED

94 DEC -8 PM 12:29

COMMISSION

D. J. Hall
 REGISTER OF DEEDS
 OTTAWA COUNTY, MI

For corners in
Ottawa
(County)

Located In: Jamestown Township Corner Code #

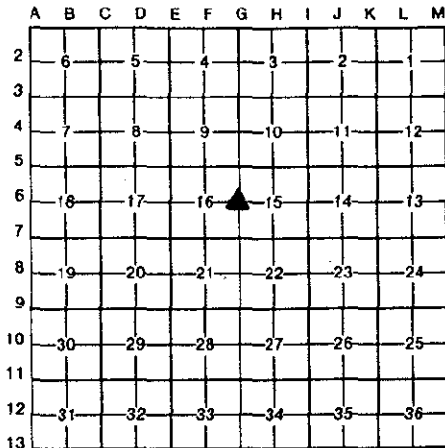
Public Land Survey	T <u>5N</u> R <u>13W</u>	<u>G-6</u>
	T _____ R _____	_____
	T _____ R _____	_____
	T _____ R _____	_____
Property Controlling in Section	S _____ T _____ R _____	_____
Miscellaneous	S _____ T _____ R _____	_____
Property in Sec.	S _____ T _____ R _____	_____

Register of Deeds Stamp & File Number

1. Lot No. _____, Recorded Plat _____
 2. Private Claims _____

Rodney D. Unema in a field survey on September 17, 19 94

I hereby certify that under requirements of P.A. 74, Michigan P.A. of 1970, the corner points mentioned in lines 1 and 2 above were in conformance with regulations and rules therefore as required in the current manual of survey instructions of the United States Department of the Interior, Bureau of Land Management or by a decree of a Court of Law and/or that the corner points mentioned in lines 3, 4 and 5 above were in conformance with the rules of the Michigan Board of Land Surveyors or by a Decree of a Court of Law; established, re-established, monumented, re-monumented, recovered, found as expressed below:



NOTE: Not more than 4 corners, all in the same town and range, may be recorded on this certificate.

3. Description of original monument and accessories and/or subsequent restoration:

G-6 1/4 corner between Sections 15 and 16
 Original gov't corner set in Dec. 1831
 by Sylvester Sibley L.C.R.C. Liber 1, Page 451
 Set H.W.P. (June 1972)
 B. Ash 8" S60°E 11 links Solid iron in mon. box
 B. Ash 18" N55°W 34 links NW cor of shed NE 83.60'
 Nail in side T.Pole E 31.57'
 SE cor of porch WNW 63.97'
 NE cor of house SW 86.44'

L.C.R.C. Liber 6, Page 172
 (Oct. 1991)
 Cast iron monument
 NE to gar cor. 67.95'
 NW to hse. cor. 72.48'
 PK nail P.Pole SW 45.16'
 SSW to hse. cor. 86.60'

3. Description of corner evidence found and/or method applied in restoring or reestablishing corner:

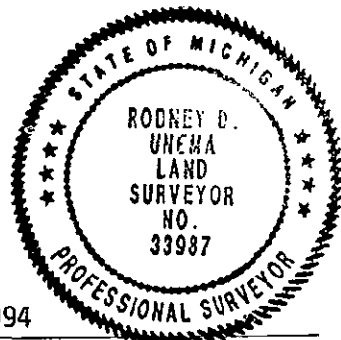
G-6
 Found C.I.M. on C/L of 24th Avenue (N-S BT road)
 Found PK & tag in S side P.Pole
 NE corner of house #2807 (conc. block fndn) S74°W 45.16'
 NW corner of metal building N54°W 72.48'
 NE corner of house #2785 (conc. block fndn) N55°E 83.49'
 S44°W 86.60'

* Accepted as a careful perpetuation of the position of the original corner.

P.A. 345 OTTAWA COUNTY
PEER APPROVED 11/21/94
Rodney D. Unema

2. Description of monument for corner and accessories established to perpetuate locating the position of the corner:

G-6 1/4 Corner Between Sections 15 and 16
 Cast iron mon. (3" dia.) / On C/L of 24th Avenue, 2" below BT surface
 Set nail & O.C. tag in S side P.Pole (4' above ground) S74°W 45.16'
 Set nail & O.C. tag in NE side 8" Elm (2' above ground) S35°E 48.83'
 NE cor. of house #2807 (conc. block fndn) N54°W 72.48'
 NW cor. of metal building N55°E 83.49'
 NE cor. of house #2785 (conc. block fndn) S44°W 86.60'



Signed by Rodney D. Unema
 Surveyor's Michigan License No. 33987

Date September 19, 1994