

RF

FEB 24 2000

RECORDED

99 JUL 30 PM 12: 26

SECTION

OTTAWA COUNTY REMONUMENTATION  
LAND CORNER RECORDATION CERTIFICATE  
Filing Requirement of Act 74, Mich. P.A. 1970

*Gary Schultz*  
REGISTER OF DEEDS  
OTTAWA COUNTY, MI

For corners in

OTTAWA  
(County)

Located In:

Corner Code #

- 1. Public Land Survey      T5N R 13W      H-1 N 1/4 Cor Sec 3
- T    R              Jamestown
- T    R              Township
- T    R              \_\_\_\_\_
- 2. Property Controlling    S    T    R              \_\_\_\_\_
- in Section                S    T    R              \_\_\_\_\_
- 3. Miscellaneous            S    T    R              \_\_\_\_\_
- Property in Sec.         S    T    R              \_\_\_\_\_

Register of Deeds Stamp & File Number

- 4. Lot No. \_\_\_\_\_, Recorded Plat \_\_\_\_\_
- 5. Private Claims \_\_\_\_\_

I, Randal J. Vugteveen, in a field survey on July 10, 1999 do hereby state that under requirements of P.A. 74, Michigan P.A. of 1970, the corner points mentioned in lines 1 and 2 above were in conformance with regulations and rules therefore as required in the current manual of survey instructions of the United States Department of the Interior, Bureau of Land Management or by a decree of a Court of Law and/or that the corner points mentioned in lines 3, 4 and 5 above were in conformance with the rules of the Michigan Board of Land Surveyors or by a Decree of a Court of Law; established, re-established, monumented, recovered, found as expressed below.

NOTE: Not more than 2 corners, all in the same town and range, may be recorded on this certificate.

	A	B	C	D	E	F	G	H	I	J	K	L	M
1													
2	6		5		4		3		2		1		
3													
4	7		8		9		10		11		12		
5													
6	18		17		16		15		14		13		
7													
8	19		20		21		22		23		24		
9													
10	30		29		28		27		26		25		
11													
12	31		32		33		34		35		36		
13													

A. Description of original monument and accessories and/or subsequent restoration:

H-1

This corner was not set by GLO

G-1 LCRC Liber 4, Page 145  
Nederveld April 1980  
Set 3/4" Iron by previous witness and infor  
Spk on W. side 30" Maple NNE 66.6'  
PK on E side cor fence post NW 28.4'  
PK on S side cor fence post WNW 70.3'  
Spk on W side 12" Maple SW 91.36'  
Iron West 8.25' (S 1/4 Cor Sec 34, T6N, R13W)

H-1 LCRC Liber 5, Page 86  
May 1983 Joiner  
Set Cast Iron Monument  
Fence Post NW 28.49'  
8" Basswood NE 69.27'  
6" Ash SW 117.30'  
Georgetwon Corner West 8.20'

B. Description of corner evidence found and/or method applied in restoring or reestablishing corner:

H-1 Found Cast Iron Monument

Found PK on E. side leaning fence post N25°W 117.27'  
Found Cast Iron Monument N90°W 8.18'  
(Georgetown Corner)

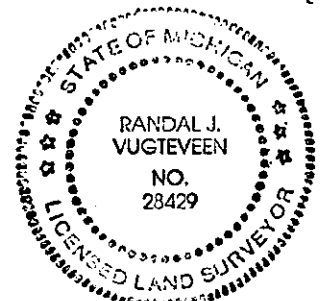
This position not established by original government surveyors. This monument is accepted as the best available evidence of the position of the corner.

PLANNED OTTAWA COUNTY  
PEER APPROVED JULY 13, 1999  
*[Signature]*

C. Description of monument for corner and accessories established to perpetuate locating the position of the corner:

H-1 Cast Iron Monument 0.07' North of Township line  
(Witnesses below are to monument)

Found Ottawa County Remon Nail & Tag in E side Power Pole N35°E 36.72'  
Set Ottawa County Remon Nail & Tag in SE corner 6" X 6" Mailbox Post S72°W 65.24'  
Set Ottawa County Remon Nail & Tag in E side 10" W Cherry N46° 93.76'  
Set Ottawa County Remon Nail & Tag in S side 18" Ash S35°W 91.40'  
Center of E & W Gravel Road North 2'  
S 1/4 Cor, Sec 34, T6N, R13W S89°W 8.18'



\$11.00 CORNER  
Receipt #52389

Signed by *[Signature]*  
Surveyor's Michigan License No. 28429

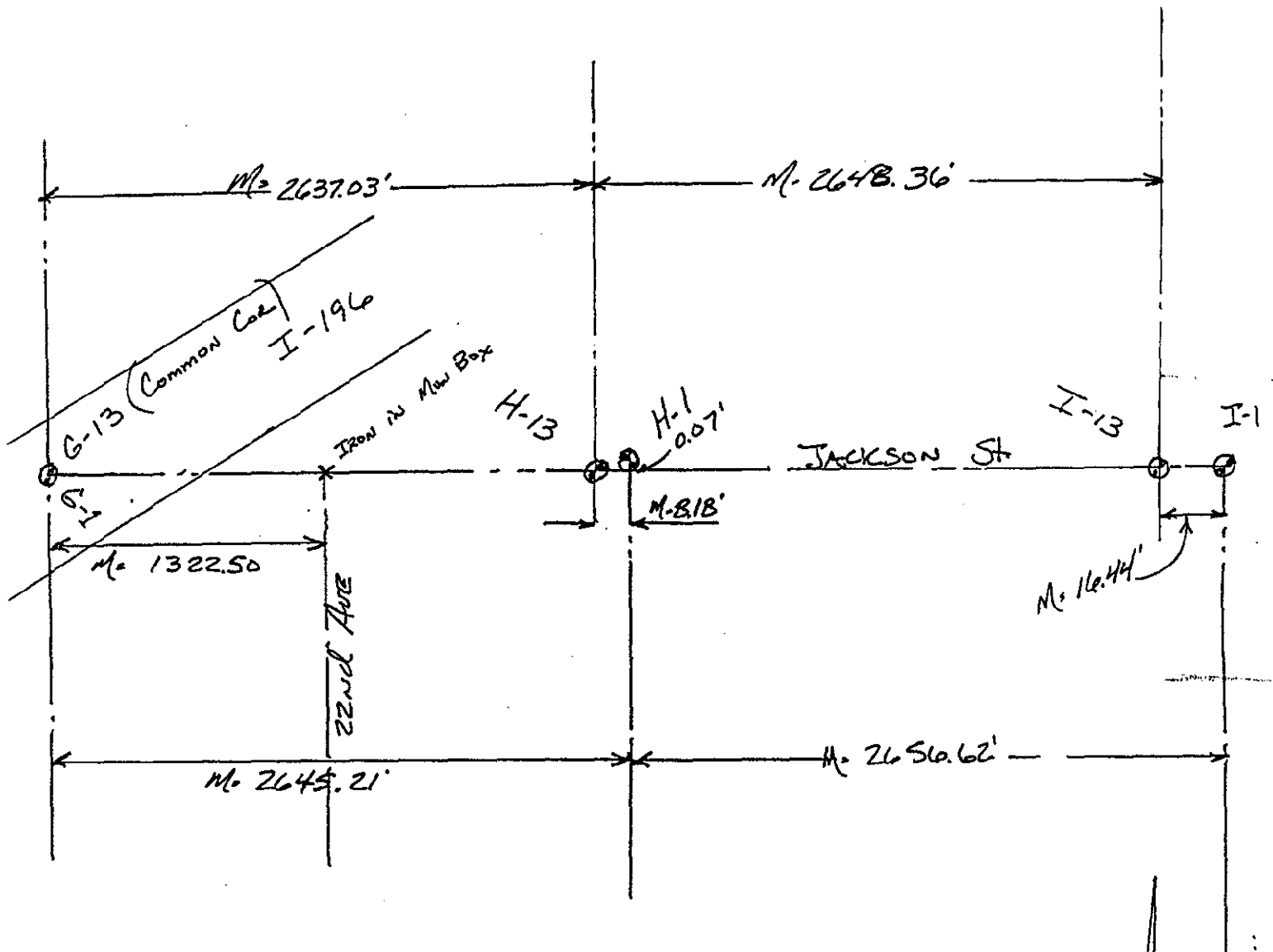
Date July 29, 1999

SURVEY &  
RECORDS

FEB 24 2000

SECTION

Section 34 - Georgetown Twp.



Section 3, Jamestown Twp.