

FEB 24 2000

RECORDED

99 JUL 30 PM 12:26

SECTION

OTTAWA COUNTY REMONUMENTATION
LAND CORNER RECORDATION CERTIFICATE
Filing Requirement of Act 74, Mich. P.A. 1970

Gary Schellert
REGISTER OF DEEDS
OTTAWA COUNTY, MI

For corners in

OTTAWA

(County)

Located In:

Corner Code #

- 1. Public Land Survey T5N R 13W I-1 NW corner
 T R Section 2
 T R Jamestown Twp.
- 2. Property Controlling S T R _____
 in Section S T R _____
- 3. Miscellaneous S T R _____
 Property in Sec. S T R _____

Register of Deeds Stamp & File Number

- 4. Lot No. _____, Recorded Plat _____
- 5. Private Claims _____

I, Randal J. Vugteveen, in a field survey on July 12, 1999 do hereby state that under requirements of P.A. 74, Michigan P.A. of 1970, the corner points mentioned in lines 1 and 2 above were in conformance with regulations and rules therefore as required in the current manual of survey instructions of the United States Department of the Interior, Bureau of Land Management or by a decree of a Court of Law and/or that the corner points mentioned in lines 3, 4 and 5 above were in conformance with the rules of the Michigan Board of Land Surveyors or by a Decree of a Court of Law; established, re-established, monumented, recovered, found as expressed below:

NOTE: Not more than 2 corners, all in the same town and range, may be recorded on this certificate.

	A	B	C	D	E	F	G	H	I	J	K	L	M
1													
2	6		5		4		3		2		1		
3													
4	7		8		9		10		11		12		
5													
6	10		17		16		15		14		13		
7													
8	19		20		21		22		23		24		
9													
10	30		29		28		27		26		25		
11													
12	31		32		33		34		35		36		
13													

A. Description of original monument and accessories and/or subsequent restoration:

I-1 Set by GLO

August, 1831 Lucius Lyon
N. Boundary 0.25 Chains East of Post
20" Sugar S59°W 28 Links
7" Elm S46°E 14 Links

Ottawa County Surveyor
E.H. Peck April 1899
N 1/4 corner Sec 2 to NW corner Sec 2=39.86
Chains (2630.76')
NE corner Sec 2 to NW corner Sec 2=79.72 chains
(5261.52')

I-1 CP co May 1965
Donald Ratekin
1" Iron Pipe Set
9" Ash NW 50.91'
6" W Cherry NNW 25.67'
Wood Fence Post SSE 22.2'

B. Description of corner evidence found and/or method applied in restoring or reestablishing corner:

I-1 Found 3/4" X 36" Long Bar 0.08' South of Town Line

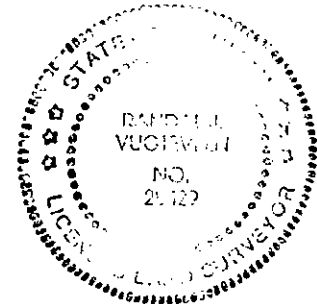
Found Decayed Remains of stump & rotting log 12" diameter NW 51.0' +/-
Ottawa County Remon Bar and Cap N90°W 16.44'
Accepted 3/4" X 36" Bar as a careful and faithful perpetuation of the position of the original corner.

RA 348 OTTAWA COUNTY
PEER APPROVED JULY 12, 1999
[Signature]

C. Description of monument for corner and accessories established to perpetuate locating the position of the corner:

I-1 Set new 3/4" X 36" Bar with Ottawa County Remon Cap on Township Line 6" Below Surface

Found Nail & Ottawa County Remon Tag in South side 6" Ash N48°E 28.50'
Found Nail & Ottawa County Remon Tag in East side Power Pole N30°W 58.14'
Set Nail & Ottawa County Remon Tag in West side 6" Elm S15°E 47.32'
Set Nail & Ottawa County Remon Tag in South side 12" Elm S57°E 72.48'
Ottawa County Bar & Cap N90°W 16.44' (Georgetown Corner)
Centerline East-West Gravel Road South 6.0'



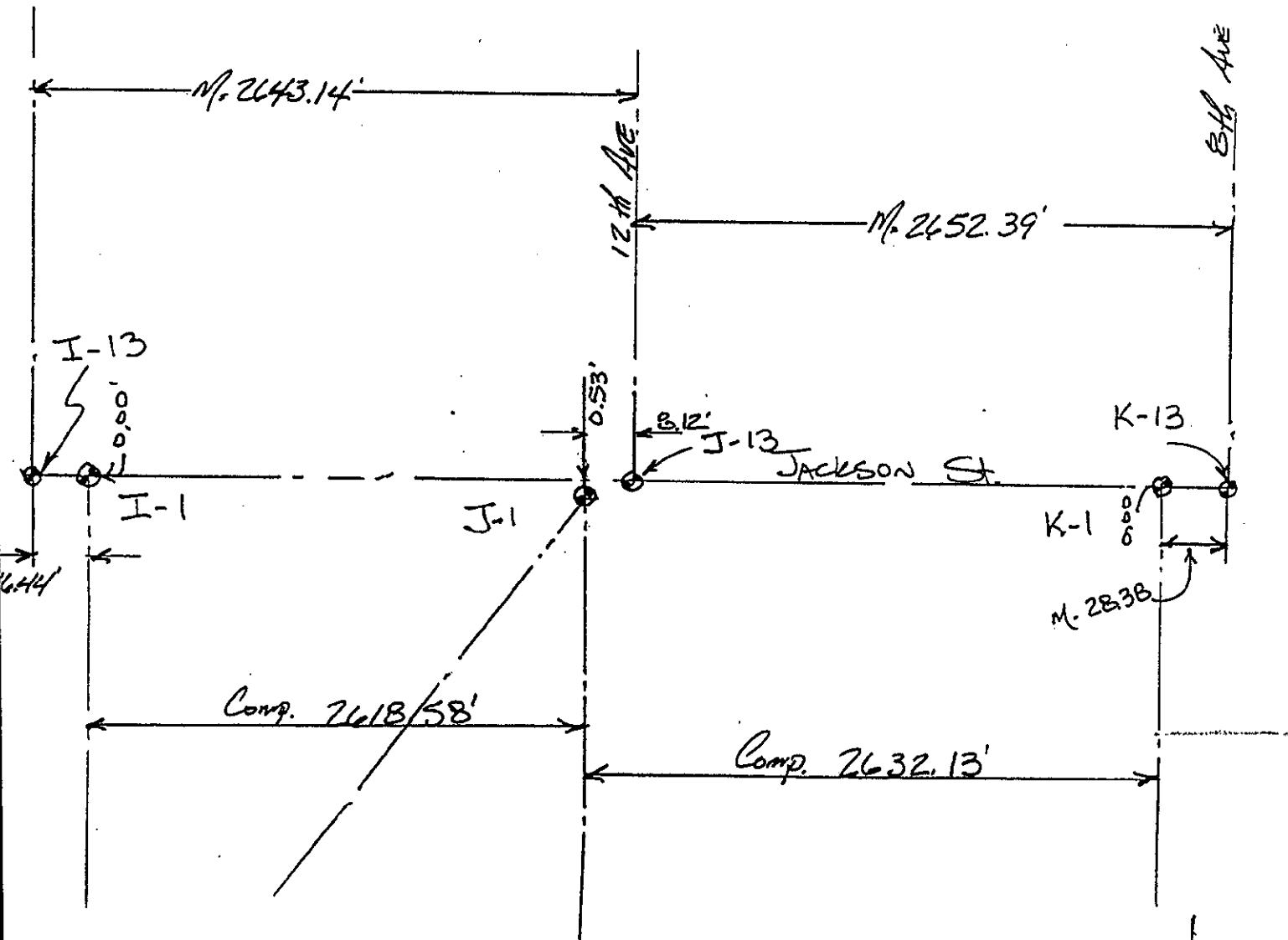
\$11.00 CORNER
Receipt #52389

Signed by *[Signature]*
Surveyor's Michigan License No. 28429

Date July 29, 1999

RECORDED
 FEB 24 2000
 SECTION

Section 35, Georgetown Twp



Section 2 Jamestown Twp