

FEB 24 2000

RECORDED

99 JUL 30 PM 12:26

OTTAWA COUNTY REMONUMENTATION

SECTION

LAND CORNER RECORDATION CERTIFICATE  
Filing Requirement of Act 74, Mich. P.A. 1970

*Randy Sublette*  
REGISTER OF DEEDS  
OTTAWA COUNTY, MI

For corners in  
OTTAWA

Located In: Corner Code #

1. Public Land Survey

T 5N R 13W J-1 N 1/4 Corner  
T R Sec 2 Jamestown  
T R Twp

2. Property Controlling  
in Section

S T R  
S T R

3. Miscellaneous  
Property in Sec.

S T R  
S T R

Register of Deeds Stamp & File Number

4. Lot No. \_\_\_\_\_, Recorded Plat \_\_\_\_\_  
5. Private Claims \_\_\_\_\_

	A	B	C	D	E	F	G	H	I	J	K	L	M
1													
2	6		5		4		3		2		1		
3													
4	7		8		9		10		11		12		
5													
6	18		17		16		15		14		13		
7													
8	19		20		21		22		23		24		
9													
10	30		29		28		27		26		25		
11													
12	31		32		33		34		35		36		
13													

Randal J Vugteveen July 12 99  
I, \_\_\_\_\_, in a field survey on \_\_\_\_\_, 19\_\_\_\_ do hereby state that under requirements of P.A. 74, Michigan P.A. of 1970, the corner points mentioned in lines 1 and 2 above were in conformance with regulations and rules therefore as required in the current manual of survey instructions of the United States Department of the Interior, Bureau of Land Management or by a decree of a Court of Law and /or that the corner points mentioned in lines 3, 4 and 5 above were in conformance with the rules of the Michigan Board of Land Surveyors or by a Decree of a Court of Law; established, re-established, monumented, recovered, found as expressed below:

NOTE: Not more than 2 corners, all in the same town and range, may be recorded on this certificate.

A. Description of original monument and accessories and/or subsequent restoration:

<p>J-1 This Corner was not set by the GLO  (Continued on Back)</p>	<p>J-1 LCRC Liber 2, Page 217 MVK December 1972 Found "T" Iron T. Pole ESE 59.10' T. Pole SSW 54.73' P. Pole NW 65.76' 20" Maple NNE 53.69' S 1/4 Sec 35, T6N, R13W Geo. Cor E 8.07'</p>	<p>J-1 LCRC Liber 2, Page 683 Greer, August 1974 Found "T" Iron Georgetown Corner E. 8.05' Nail in Side 30" Maple SSE 96.36' Centerline Hydrant NE 45.48' Nail in side T. Pole SSW 55.01' Nail in side P. Pole NW 67.00'</p>
--	--	--

B. Description of corner evidence found and/or method applied in restoring or reestablishing corner:

Found Cast Iron Monument in Mon. Box  
  
Centerline 30" Maple S23°E 95.5'  
Center of hydrant N46°E 45.47'  
Fd Nail & Tag in S side P. Pole N27°W 67.18'  
Fd PK in N side P. Pole S78°W 102.15'  
Fd C.I. Mon East 8.14'

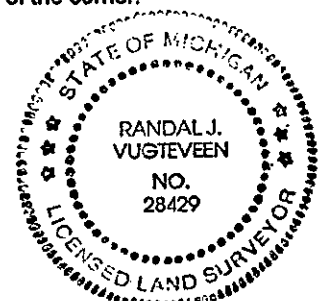
RECORDED  
JULY 12, 1999  
*RJV*

This position not established by original government surveyors. This monument is accepted as the best available evidence of the position of the corner.

C. Description of monument for corner and accessories established to perpetuate locating the position of the corner:

J-1 4" Cast Iron Monument in Mon. Box 0.53' South of Township Line (See sketch on back)

The witnesses below are to the Cast Iron Monument  
Found Nail and Ottawa County Remon Tag in East side Power Pole N27°W 67.18'  
Found Nail and Ottawa County Remon Tag in North side Power Pole S78°W 102.16'  
Found Nail and Ottawa County Remon Tag in West side 10" Ash N39°E 112.58'  
NW cor of Brick House S35°E 130.02'  
On centerline blacktop E & W and at centerline Angling Road to Southwest  
Cast Iron Monument in Mon Box N87°E 8.14' (Georgetown Cor)



\$11.00 CORNER  
Receipt #52389

Signed by *Randal J. Vugteveen*  
Surveyor's Michigan License No. 28429

Date July 29, 1999

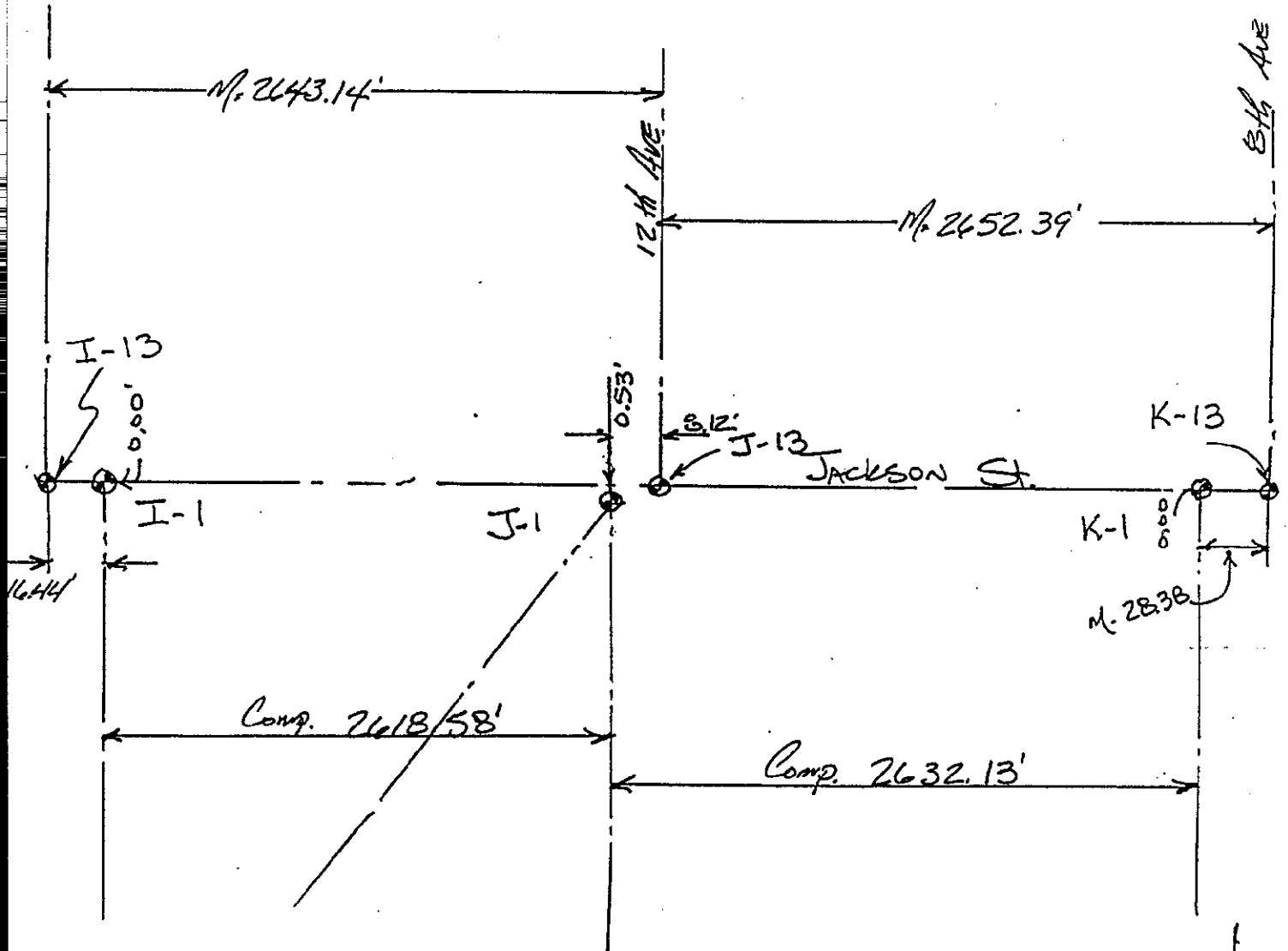
A. Continued.  
 J-1 LCRC Liber 4, Page 343  
 August 1982 Joiner  
 Set Cast Iron Monument  
 Power Pole NW 67.14'  
 Centerline Hydrant NE 45.48'  
 Telephone Pole WSW 102.23'  
 Georgetown Corner East 8.14'

SURVEY &  
 RECONSTRUCTION

FEB 24 2000

SECTION

SECTION 35, Georgetown Twp



SECTION 2 Jamestown Twp