

FEB 24 2000

OTTAWA COUNTY REMONUMENTATION
 LAND CORNER RECORDATION CERTIFICATE
 Filing Requirement of Act 74, Mich. P.A. 1970

RECORDED

99 SEP -9 PM 12: 15

Randy Scholtz
 REGISTER OF DEEDS
 OTTAWA COUNTY, MI

SECTION

For corners in

<u>OTTAWA</u> (County)	Located In:	Corner Code #	
1. Public Land Survey	T <u>5</u> N R <u>13</u> W	K-1 NW Corner	
	T ___ R ___	Section <u>1</u>	
	T ___ R ___	Jamestown	
	T ___ R ___	Township	
2. Property Controlling in Section	S ___ T ___ R ___		
	S ___ T ___ R ___		
3. Miscellaneous Property in Sec.	S ___ T ___ R ___		
	S ___ T ___ R ___		
4. Lot No. _____, Recorded Plat _____			
5. Private Claims _____			

Register of Deeds Stamp & File Number

1	A	B	C	D	E	F	G	H	I	J	K	L	M
2	6	5	4	3	2	1							
3													
4	7	8	9	10	11	12							
5													
6	18	17	16	15	14	13							
7													
8	19	20	21	22	23	24							
9													
10	30	29	28	27	26	25							
11													
12	31	32	33	34	35	36							
13													

I, Randal J. Vugteveen, in a field survey on July 12, 19 99 do hereby state that under requirements of P.A. 74, Michigan P.A. of 1970, the corner points mentioned in lines 1 and 2 above were in conformance with regulations and rules therefore as required in the current manual of survey instructions of the United States Department of the Interior, Bureau of Land Management or by a decree of a Court of Law and/or that the corner points mentioned in lines 3, 4 and 5 above were in conformance with the rules of the Michigan Board of Land Surveyors or by a Decree of a Court of Law; established, re-established, monumented, recovered, found as expressed below:

NOTE: Not more than 2 corners, all in the same town and range, may be recorded on this certificate.

A. Description of original monument and accessories and/or subsequent restoration:

K-1 GLO Dec. 1831
 Sylvester Sibley
 N. Bndy 0.43 chains West of Post
 40" Beech S53°E 39 Links
 7" Beech S48°E 32 Links

K-1 Liber 1, Page 331
 April 1972 MVK
 Nail in side 18" Maple NW 53.97'
 Nail in side T. Pole ESE 39.78'
 Nail in side T. Pole WSW 73.29'
 "T" Iron (SW corner Section 36-6-13) E 28.45'

K-1 Liber 2, Page 683
 August 1974 Greer
 Found Steel Bar
 Georgetown Corner East 28.50'
 Nail in side 20" Walnut WNW 97.65'
 Nail in side centerline street sign 37.20'
 Nail in side telephone pole SE 39.78'
 Nail in side telephone pole WSW 73.24'

(Continued on Back)

B. Description of corner evidence found and/or method applied in restoring or reestablishing corner:

K-1 Found 3/4" X 36" Steel Bar in Mon. Box on Township line

Fd Pk in SE side P. Pole S20°W 93.70'
 Fd Nail in W side Twin 16" W Cherry S8°E 171.56'
 Fd Cast Iron Monument in Mon Box N90°E 28.38'

Accepted 3/4" X 36" Steel Bar as a careful and faithful perpetuation of the position of the original corner.

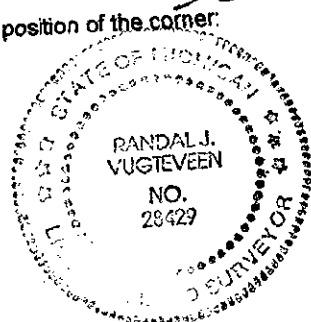
Removed steel bar, replaced with a 3/4" X 36" steel bar with remon cap.

8/16/99
YDR

C. Description of monument for corner and accessories established to perpetuate locating the position of the corner:

K-1 3/4" X 36" Steel Bar with Ottawa County Remon Cap.

Found Nail & Ottawa County Remon Tag in SE side Power Pole S20°W 93.70'
 Set Nail & Ottawa County Remon Tag in West side Twin 16" W Cherry S8°E 171.56'
 Found Nail & Ottawa County Remon Tag in SW side 22" Maple N30°W 89.36'
 Cast Iron Monument in Mon Box (Georgetown Township Corner K-13) N90°E 28.38'
 Center of Intersection N90°E 3'



\$11.00 CORNER
 Receipt #56820

\$2.00 PHOTO
 Receipt #56820

Signed by *Randal J. Vugteveen*
 Surveyor's Michigan License No. 28429

Date August 27, 1999

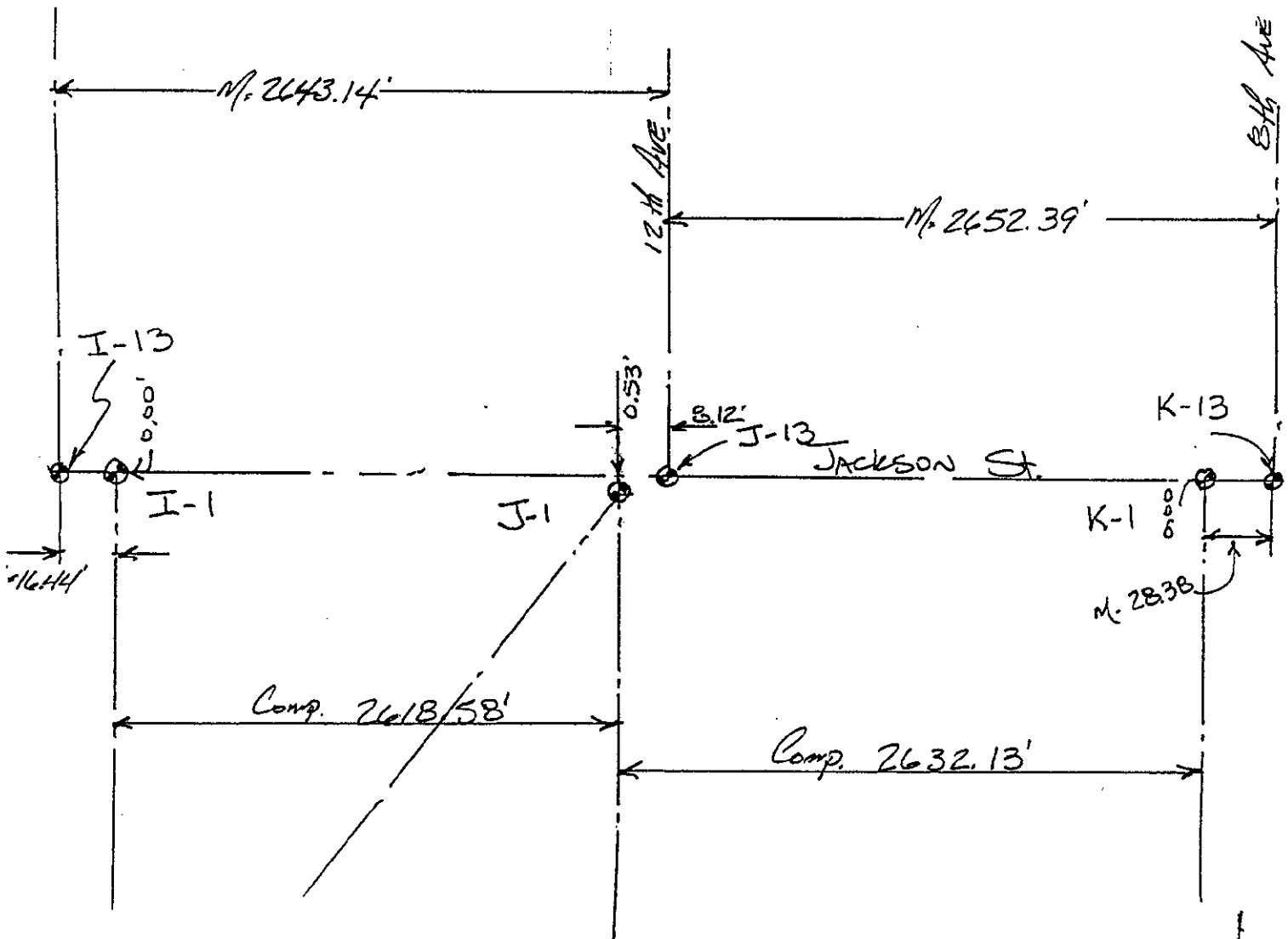
A. Continued
 K-1 Liber 3, Page 250
 November 1977 Exxel
 Pk in Power Pole SW 53.97'
 Nail in side 14" Maple NW 53.97'
 Nail in side 36" W Cherry SSE 171.85'
 Center Street Sign Post SE 37'

SURVEY &
 REVISION

FEB 24 2000

SECTION

Section 35, Georgetown Twp



Section 2 Jamestown Twp