

FEB 24 2000

RECORDED

OTTAWA COUNTY REMONUMENTATION
LAND CORNER RECORDATION CERTIFICATE
Filing Requirement of Act 74, Mich. P.A. 1970

99 SEP -9 PM 12: 15

SECTION

For corners in

OTTAWA

(County)

Located In:

Corner Code #

- 1. Public Land Survey T 5N R 13W L-1 N 1/4 corner
 T ___ R ___ Section 1
 T ___ R ___ Jamestown
 T ___ R ___ Township
- 2. Property Controlling S ___ T ___ R ___
 in Section S ___ T ___ R ___
- 3. Miscellaneous S ___ T ___ R ___
 Property in Sec. S ___ T ___ R ___

Dany Schellter
REGISTER OF DEEDS
OTTAWA COUNTY, MI

Register of Deeds Stamp & File Number

- 4. Lot No. _____, Recorded Plat _____
- 5. Private Claims _____

I, Randal J. Vugteveen, in a field survey on July 12, 1999 do hereby state that under requirements of P.A. 74, Michigan P.A. of 1970, the corner points mentioned in lines 1 and 2 above were in conformance with regulations and rules therefore as required in the current manual of survey instructions of the United States Department of the Interior, Bureau of Land Management or by a decree of a Court of Law and /or that the corner points mentioned in lines 3, 4 and 5 above were in conformance with the rules of the Michigan Board of Land Surveyors or by a Decree of a Court of Law; established, re-established, monumented, recovered, found as expressed below:

NOTE: Not more than 2 corners, all in the same town and range, may be recorded on this certificate.

A	B	C	D	E	F	G	H	I	J	K	L	M
1												
2	6		5		4		3		2		1	
3												
4	7		8		9		10		11		12	
5												
6	18		17		16		15		14		13	
7												
8	19		20		21		22		23		24	
9												
10	30		29		28		27		26		25	
11												
12	31		32		33		34		35		36	
13												

A. Description of original monument and accessories and/or subsequent restoration:

L-1

This corner was not set by the GLO

L-1 LCRC Liber 1, Page 331
 Found "T" Iron
 Nail in side T Pole S 25.39'
 Nail in side 16" Walnut SE 51.31'
 NE corner House SW 79.22'
 NW corner House SE 89.94'
 "T" Iron (S 1/4 Section 36-6-13) East 14.17'

L-1 LCRC Liber 3, Page 197
 Set Cast Iron Monument
 Power Pole North 26.52'
 NE corner hse frdn SW 79.32'
 Power Pole South 23.36'
 NW corner Brick House SE 89.98'
 S 1/4 Sec. 36 Geo. Twp East 14.12'

B. Description of corner evidence found and/or method applied in restoring or reestablishing corner:

L-1 Found Large Nail in Monument Box 0.04' South of Township line.

NE corner house foundation S40°W 79.29'
 NW Corner brick house S30°E 89.74'
 Center 16" Walnut SE 51.3'
 Remon Bar and Cap in Mon. Box N90°E 14.12'
 (Georgetown Corner)

This position was not established by original government surveyors. Accepted large nail as the best available evidence of the position of the corner.

Removed large nail and replaced with a 3/4" X 36" steel bar with remon cap.

C. Description of monument for corner and accessories established to perpetuate locating the position of the corner:

L-1 3/4" X 24" Solid Bar and Ottawa County Remon Cap on Township line

Found Nail and Ottawa County Remon Tag in S Side Power Pole N74°W 107.16'
 Found Nail and Ottawa County Remon Tag in W side Power Pole N55°E 55.18'
 Found Nail and Ottawa County Remon Tag in E side Power Pole S2°E 30.92'
 NE corner House frdn S37°W 79.22'
 NW corner House frdn (Brick) S37°E 89.80'
 Centerline Intersection is 1'S & 14'E
 Remon Bar and Cap in Mon Box N90°E 14.12' (Georgetown Corner)

8/16/99
[Signature]
 RANDAL J. VUGTEVEEN
 NO. 28429
 \$11.00 CORNER
 Receipt #56820

\$2.00 PHOTO
Receipt #56820

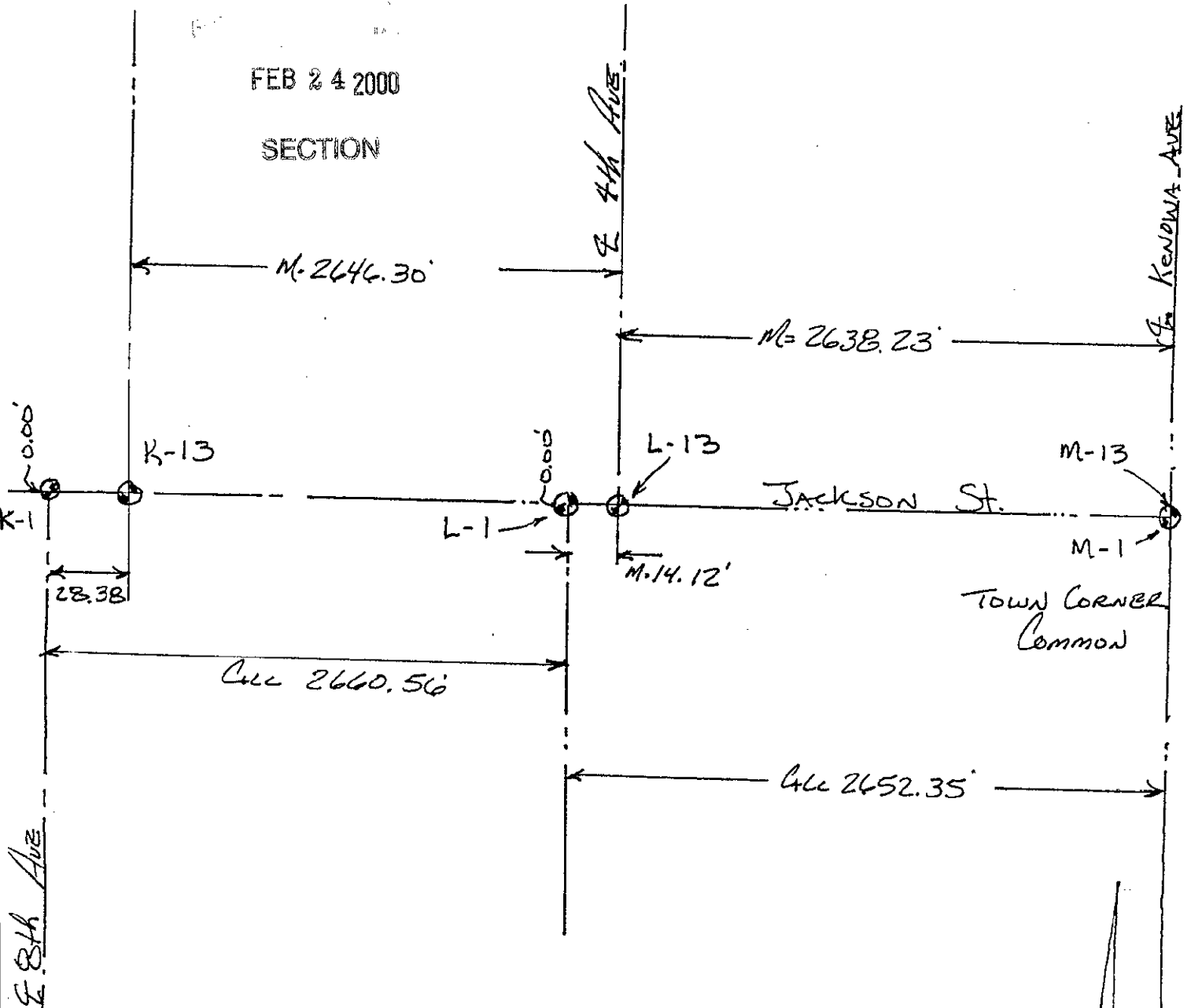
Signed by *Randal J. Vugteveen*
Surveyor's Michigan License No. 28429

Date August 27, 1999

Section 36 Georgetown Twp.

FEB 24 2000

SECTION



Section 1 Jamestown Twp.