

FEB 24 2000

OTTAWA COUNTY REMONUMENTATION
LAND CORNER RECORDATION CERTIFICATE
Filing Requirement of Act 74, Mich. P.A. 1970

RECORDED
99 SEP 23 PM 3: 21

For corners in SECTION
OTTAWA
(County)

Located In: ZEELAND TOWNSHIP
Corner Code #

1. Public Land Survey

T 5N R 14W G-1
T R NW Corner
T R Section 3

2. Property Controlling in Section

S T R

3. Miscellaneous Property In Sec.

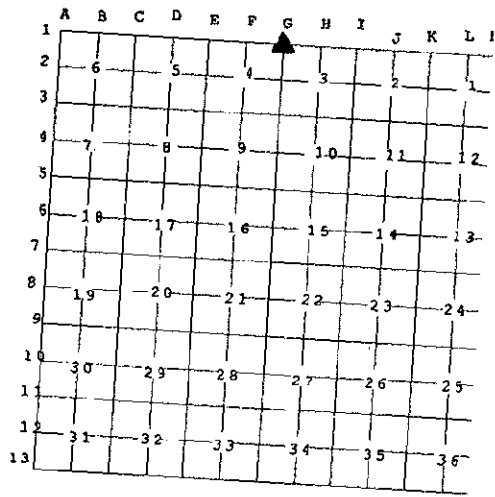
S T R
S T R
S T R

Rodney D. Unema
REGISTER OF DEEDS
OTTAWA COUNTY, MI

Register of Deeds Stamp & File Number

4. Lot No. _____, Recorded Plat _____
5. Private Claims _____

I, Rodney D. Unema, in a field survey on September 16, 19 99 do hereby state that under requirements of P.A. 74, Michigan P.A. of 1970, the corner points mentioned in lines 1 and 2 above were in conformance with regulations and rules therefore as required in the current manual of survey instructions of the United States Department of the Interior, Bureau of Land Management or by a decree of a Court of Law and for that the corner points mentioned in lines 3, 4 and 5 above were in conformance with the rules of the Michigan Board of Land Surveyors or by a Decree of a Court of Law; established, re-established, monumented, recovered, found as expressed below:



NOTE: Not more than 2 corners, all in the same town and range, may be recorded on this certificate.

A. Description of original monument and accessories and/or subsequent restoration:

G-1 NW Corner, Section 3

March 30, 1832, G.L.O. Survey by C. Britain
Set Corner to Sections 3 and 4
7 3 links to West of Post
3" Beech S19°E 25 links
12" Sugar S23°W 29 links

Jan. 11, 1972 (Greer)
Liber 1, page 233
Found "T" Iron

P.P. NW 54.50'
Tel. Pole NW 48.57'
P.P. NE 183.72'
P.P. SE 128.10'
"T" Iron-Blendon Twp. Cor. East 48.17'

B. Description of corner evidence found and/or method applied in restoring or reestablishing corner:

G-1 Found "T" Iron in Mon. Box on Township Line

G-13 T6N, R14W, Ottawa Co. mon. in mon. box
Fnd old broken off pole
Fnd PK nail in SW sde newer P. pole
Fnd PK nail in NE sde P. pole

East 48.17'
N28°W 54.6' to face
N30°W 54.02'
S50°E 61.16'

*OVER FOR SKETCH

Accepted as a careful and faithful perpetuation of the position of the original corner. Replace "T" Iron with Ottawa County Cap on 3/4" x 24" Bar.

9/20/99
[Signature]

C. Description of monument for corner and accessories established to perpetuate locating the position of the corner:

G-1 Ottawa Co. Cap on 3/4" x 24" Bar in Monument Box at intersection of 72nd & New Holland.

Set nail & O.C. remon tag in SW side P. pole
Set nail & O.C. remon tag in NE side P. pole
West Cor. conc. fndn hse #7185
Set rerod .3' North of base of stop sign
G-13 T6N, R14W, O.C. mon.
On centerline of BT Road to South 72nd Avenue
On centerline of Gravel Road to West New Holland

N30°W 54.02'
N50°E 61.16'
N47°E 178.48'
S68°W 42.37'
East 48.17'



Signed by Rodney D. Unema
Surveyor's Michigan License No. 33987

Date September 17, 1999

REGISTERED
FEB 24 2000

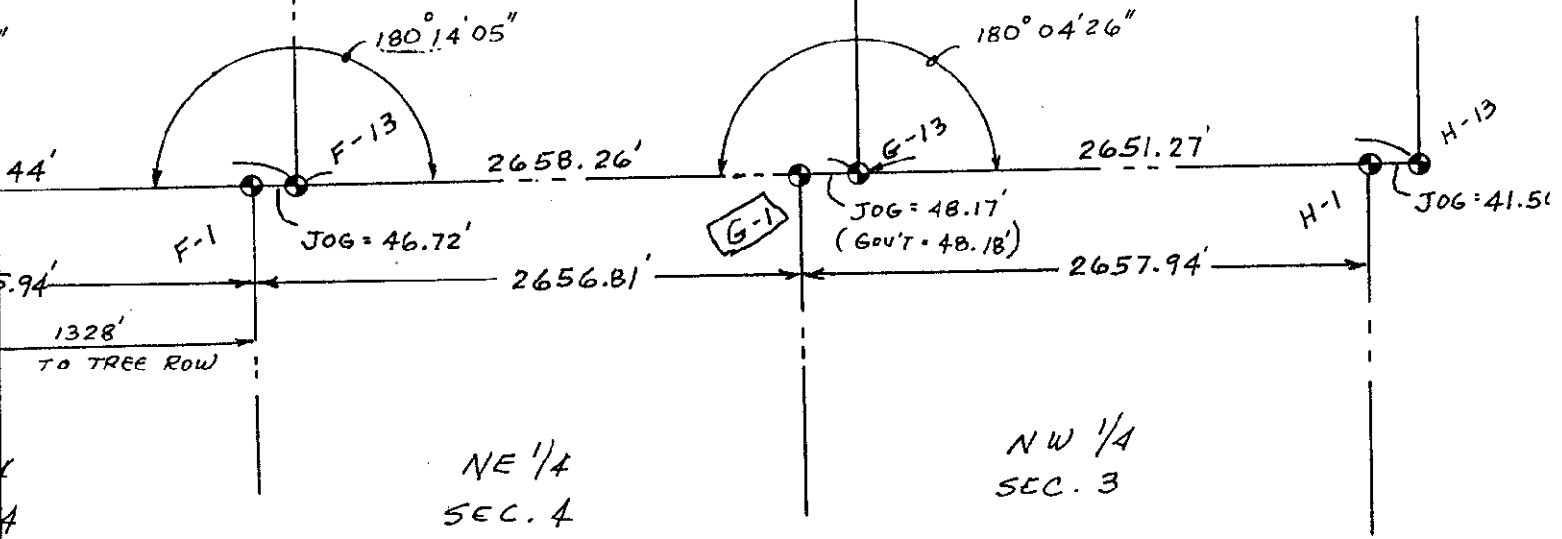
FEB 24 2000

SECTION

T6N, R14W

SE 1/4
SEC. 33

SW 1/4
SEC. 34



T5N, R14W