

FEB 24 2000

OTTAWA COUNTY REMONUMENTATION
LAND CORNER RECORDATION CERTIFICATE
Filing Requirement of Act 74, Mich. P.A. 1970

RECORDED

99 SEP 23 PM 3: 20

For corners in SECTION

OTTAWA (County)	Located In: Zeeland Township	Corner Code #
1. Public Land Survey	T 5N R 14W	H-3
	T ___ R ___	N 1/4 corner
	T ___ R ___	Section 10
	T ___ R ___	_____
2. Property Controlling in Section	S ___ T ___ R ___	_____
	S ___ T ___ R ___	_____
3. Miscellaneous Property In Sec.	S ___ T ___ R ___	_____
	S ___ T ___ R ___	_____

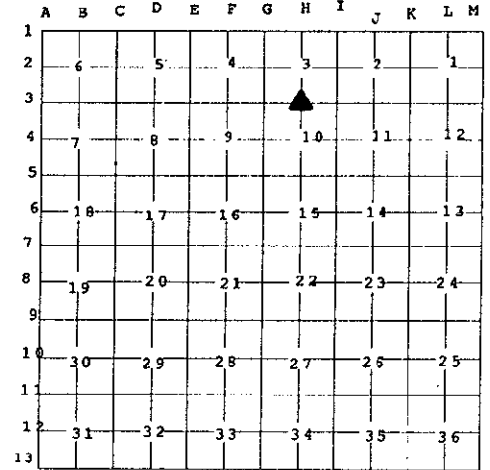
Rory Sublette
REGISTER OF DEEDS
OTTAWA COUNTY, MI

Register of Deeds Stamp & File Number

4. Lot No. _____, Recorded Plat _____
5. Private Claims _____

I, Rodney D. Unema, in a field survey on August 17, 1999 do hereby state that under requirements of P.A. 74, Michigan P.A. of 1970, the corner points mentioned in lines 1 and 2 above were in conformance with regulations and rules therefore as required in the current manual of survey instructions of the United States Department of the Interior, Bureau of Land Management or by a decree of a Court of Law and /or that the corner points mentioned in lines 3, 4 and 5 above were in conformance with the rules of the Michigan Board of Land Surveyors or by a Decree of a Court of Law; established, re-established, monumented, recovered, found as expressed below:

NOTE: Not more than 2 corners, all in the same town and range, may be recorded on this certificate.



A. Description of original monument and accessories and/or subsequent restoration:

H-3 1/4 Corner between Sections 3 & 10		
April 1832 G.L.O. Survey	Feb. 15, 1972 - Greer	Sept. 28, 1984 - Nederveld
Sylvester Sibley	Liber 1, Page 263	Not recorded
Set 1/4 Sec. Post	Set cast iron mon	Found 1" iron pipe
18" Sugar S32°E 18 links	Nail in face of 18" Stump SW 43.88'	Nail in E. sde 14" Maple S20°W 93.17'
10" Sugar N9°E 27 links	Nail in face of P. pole SE 75.44'	Nail in Face p.pole N54°E 150.09'
	Nail in face of 10" Maple SW 92.51'	Nail in NE sde 10" Maple S54°E 34.40'
	Nail in face of P. Pole NE 149.96'	Iron Pipe (Bent) 3'N & 4'E

8/30/99
RDU

B. Description of corner evidence found and/or method applied in restoring or reestablishing corner:

H-3 Found 1" Solid Pipe (9" deep in gravel road)
Found Nail & washer in SW'ly face of P. pole N54°E - M=150.14'
Found full & nail evidence in E. sde of 18" Maple S20°W - M=92.89'

Accepted as a careful and faithful perpetuation of the position of the original corner.

C. Description of monument for corner and accessories established to perpetuate locating the position of the corner:

H-3 1/4 Corner between Sections 3 & 10
Set Ottawa Co. Remon bar & cap (over existing 1" solid pipe) in E-W gravel road
Fnd nail & washer in SW'ly side of P. pole N54°E = 150.14'
Set nail & remon tag in NE side of 18" Maple S20°W = 92.11'
NE cor of Brick Face to garage of hse #6830 S45°W = 127.18'
NW cor of Brick Face to hse #6830 S58°W = 181.25'
Set nail & remon tag in side of P. pole N57°W = 183.18'
Centerline of E-W gravel road N0°E = 2'



Signed by Rodney D. Unema
Surveyor's Michigan License No. 33987

Date August 26, 1999