

SURVEY & REMONUMENTATION

APR 05 1996

Ottawa County Remonumentation LAND CORNER RECORDATION CERTIFICATE

Filing Requirement of Act 74, Mich. P.A. 1970

For corners in **COMMISSION**

Ottawa (County)	Located In:	Corner Code =#
1. Public Land Survey	T 5N R 14W	J-7 (S $\frac{1}{2}$, 14) Zeeland Twp.
	T _____ R _____	_____
	T _____ R _____	_____
	T _____ R _____	_____
2. Property Controlling in Section	S _____ T _____ R _____	_____
	S _____ T _____ R _____	_____
3. Miscellaneous Property in Sec.	S _____ T _____ R _____	_____
	S _____ T _____ R _____	_____

RECORDED

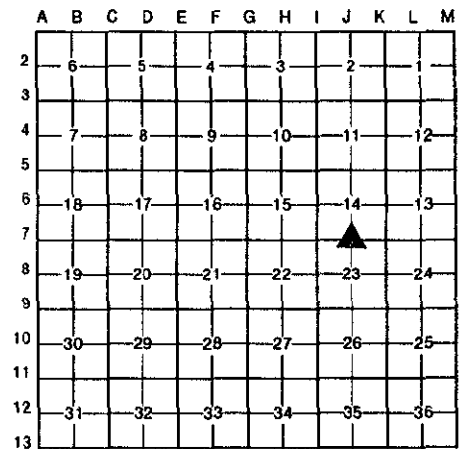
95 NOV 29 PM 1:45

Register of Deeds
REGISTER OF DEEDS
OTTAWA COUNTY, MI

Register of Deeds Stamp & File Number

4. Lot No. _____, Recorded Plat _____
5. Private Claims _____

I, John C. Bueche, in a field survey on November 13, 19 95, do hereby certify that under requirements of P.A. 74, Michigan P.A. of 1970, the corner points mentioned in lines 1 and 2 above were in conformance with regulations and rules therefore as required in the current manual of survey instructions of the United States Department of the Interior, Bureau of Land Management or by a decree of a Court of Law and/or that the corner points mentioned in lines 3, 4 and 5 above were in conformance with the rules of the Michigan Board of Land Surveyors or by a Decree of a Court of Law; established, re-established, monumented, re-monumented, recovered, found as expressed below:



NOTE: Not more than 4 corners, all in the same town and range, may be recorded on this certificate.

A. Description of original monument and accessories and/or subsequent restoration:

J-7 GLO Calvin Britain, D.S. March, 1832 1/4 sec. post on true line 39.95' Sugar 20 N 34 E 22 Beech 14 S 34 W 21	LCRC L2-P549, Sept., 1974 Set bt. spk. Information from others & OCRC PP S 43.15' PP NE 45.18' TP NW 59.58' C/L bit. conc. pave N 0.10'	LCRC L2-P671, Oct., 1974 Bt. spk. PK in PP NE 45.57' PK in TP NW 59.75' PK P&T pole S 43.48' C/L Byron Rd. S 0.10'
--	---	---

B. Description of corner evidence found and/or method applied in restoring or reestablishing corner:

J-7 Found cast iron mon. in Mon. Box
All wit. gone

And is accepted as a careful and faithful perpetuation of the position of the original corner.

PA. 345 OTTAWA COUNTY
PEER APPROVED 11-20-95

Handwritten signature: K. D. McDowell
907

C. Description of monument for corner and accessories established to perpetuate locating the position of the corner:

J-7 Cast iron mon. in Mon. Box	
C/L manhole cover	N 20 W 34.90'
C/L manhole cover	S 20 W 36.95'
Nail & Ottawa Co. Remon. Tag in W side 10" wood post	N 25 E 240.60'
Nail & Ottawa Co. Remon. Tag in NW side 10" wood post	N 60 E 125.89'
On C/L bit. E-W	
C/L bit. N 1.0'± West	



Signed by John C. Bueche
John C. Bueche, P.S. 13027
Surveyor's Michigan License No. _____

Date Nov. 16, 1995

LCRC L4-P152

Feb., 1981

Bt. spk.

Same wit. as LCRC L2-P671

LCRC L5-P164, Dec., 1984

Found bt. spk.

Set CIM

PP NE 53.95'

Sign NNE 81.06'

TP NW 59.75'

PP S 45.48'

\$ 11.00 CORNER