

SURVEY & REMONUMENTATION

DEC 01 1998

Ottawa County Remonumentation
LAND CORNER RECORDATION CERTIFICATE
 Filing Requirement of Act 74, Mich. P.A. 1970

RECORDED
 98 MAY 22 PM 4:06

Ray [Signature]
 REGISTER OF DEEDS
 OTTAWA COUNTY, MI

For corners in SECTION

<u>Ottawa</u> (County)	Located In:	Corner Code #
1. Public Land Survey	T <u>5N</u> R <u>15W</u>	<u>A-7 (NW, 19)</u> <u>Holland Twp.</u>
	T _____ R _____	_____
	T _____ R _____	_____
	T _____ R _____	_____
2. Property Controlling In Section	S _____ T _____ R _____	_____
	S _____ T _____ R _____	_____
3. Miscellaneous Property in Sec.	S _____ T _____ R _____	_____
	S _____ T _____ R _____	_____
4. Lot No. _____, Recorded Plat _____		
5. Private Claims _____		

Register of Deeds Stamp & File Number

I, John C. Bueche, in a field survey on April 3, 19 98, do hereby certify that under requirements of P.A. 74, Michigan P.A. of 1970, the corner points mentioned in lines 1 and 2 above were in conformance with regulations and rules therefore as required in the current manual of survey instructions of the United States Department of the Interior, Bureau of Land Management or by a decree of a Court of Law and/or that the corner points mentioned in lines 3, 4 and 5 above were in conformance with the rules of the Michigan Board of Land Surveyors or by a Decree of a Court of Law; established, re-established, monumented, re-monumented, recovered, found as expressed below:

A	B	C	D	E	F	G	H	I	J	K	L	M
2	6	5	4	3	2	1						
3												
4	7	8	9	10	11	12						
5												
6	18	17	16	15	14	13						
7												
8	19	20	21	22	23	24						
9												
10	30	29	28	27	26	25						
11												
12	31	32	33	34	35	36						
13												

NOTE: Not more than 4 corners, all in the same town and range, may be recorded on this certificate.

A. Description of original monument and accessories and/or subsequent restoration:

A-7 GLO	LCRC 1-173, Dec., 1971
Calvin Britain, 1832	Fnd. conc. mon.
West boundary 43 North of post	Nail in face 24" Twin Oak N 85° E 55.52'
Set cor. to Secs. 18 & 19	Nail in face TP E 48.43'
Beech 14 S 44 E 26	Nail in face TP SW 99.23'
Beech 18 N 36 E 40	Nail in face 36" Maple SW 73.91'
	Nail in face 18" Maple SE 67.00'
	NW or. hse. S 30° E 103.40'
	Angle iron Park Twp. cor. South 28.17'

OVER

B. Description of corner evidence found and/or method applied in restoring or reestablishing corner:

A-7 Found 4" Harrison Mon. in Mon. Box & #12579 (Exxel) capped rerod 0.43' West
 Rerod is on Township Line between M-7 (NE 24) & M-6 (E 1/4 13), 5-16
 18" Maple SE 67.00'±
 NW cor. hse. S 30° E 103.40'
 GP ENE 48.74'±
 TP NNW 124.01'±
 6" Pine SSW 73.85'±
 C/L hyd. NE 55.34'±

P.A. 345 OTTAWA COUNTY
 PEER APPROVED 4/20/98
[Signature]

And is accepted as a careful and faithful perpetuation of the position of the original corner.

C. Description of monument for corner and accessories established to perpetuate locating the position of the corner:

A-7 Replaced capped iron with 3/4" x 24" Pin with Ottawa Co. Cap in bit. road
 Ottawa Co. Remon. Tag & Nail in NE side 30" Oak S 20° E 68.38'
 Ottawa Co. Remon. Tag & Nail in SE side 12" White Pine S 40° W 86.40'
 Ottawa Co. Remon. Tag & Nail in NW side 28" Oak N 43° E 76.52'
 SE cor. garg. siding N 65° W 99.70'
 Ottawa Co. Remon. Tag in N side Dbl. 10" Pine S 70° E 125.69'
 Ottawa Co. Mon. in Mon. Box M-7 (NE 24, 5-16) South 28.20'
 On C/L bit. road N-S; C/L bit. road E-W South 20'±
 Mon. in Mon. Box West 0.43'

\$ 11.00 CORNER
 \$ 2.00 PHOTO



Signed by John C. Bueche, P.S. 13027 Date 4-13-98
 Surveyor's Michigan License No. _____

SURVEY &
REMONUMENTATION

DEC 01 1998

A-7
PART A - continued

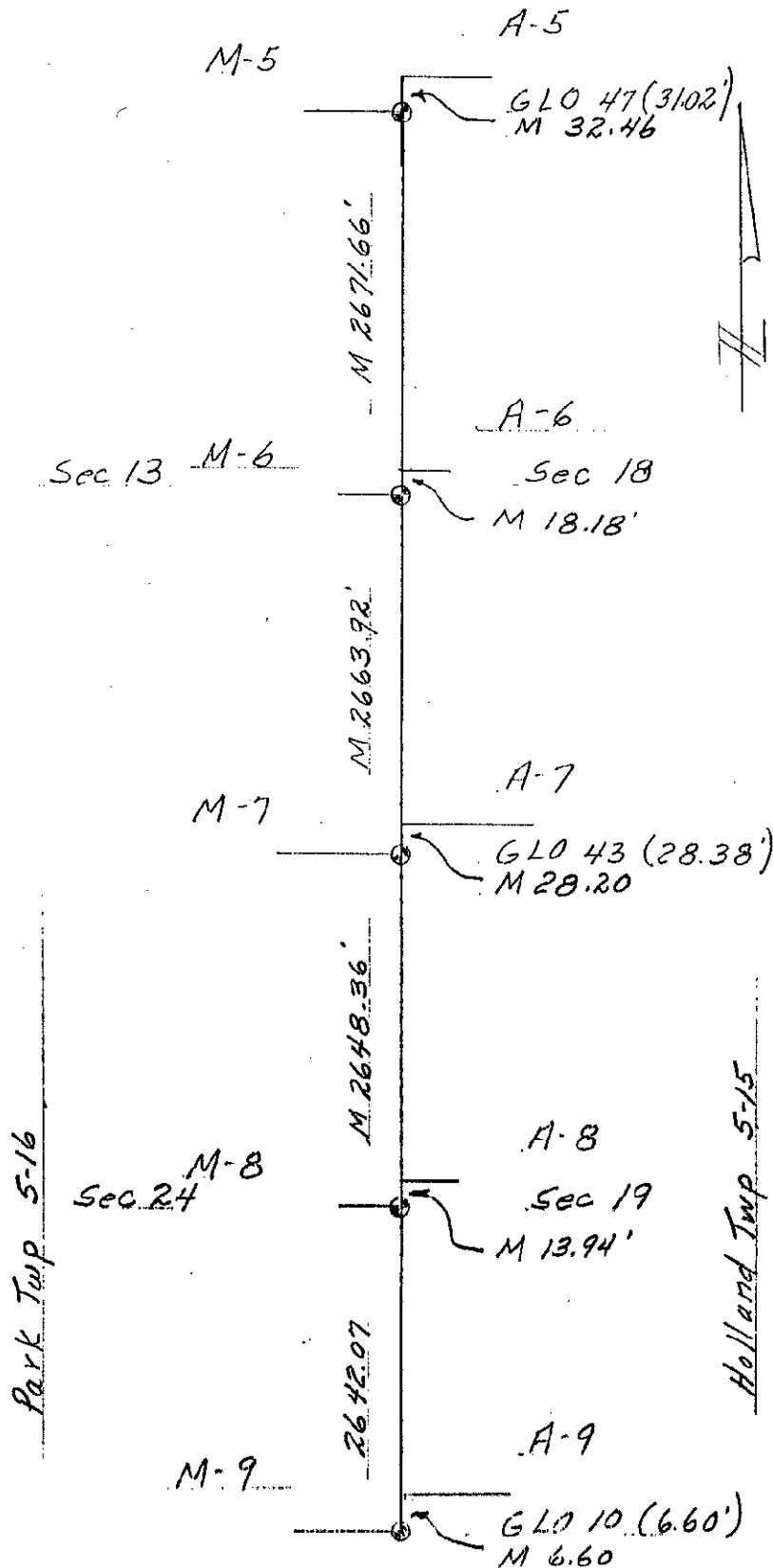
SECTION

LCRC 1-455, June, 1972
Mon. @ corner under bit.
Nail in side 30" Oak SSE 68.20'
Nail in side TP SW 99.70'
Nail in side GP ENE 48.74'
Nail in side T&PP NNW 124.01'

LCRC 4-181, May, 1981
1" iron in mon. box
NE 48.39' to PK in S side PP
SE 67.70' to PK in W side 36" Oak
SSW 73.85' to PK in NW side 6" Pine
SW 100.03' to PK in N side PP

LCRC can not read, June, 1984
CIM
PP E 48.81'
Park Twp. cor. S 28.30'
28" Maple SSE 68.13'
LP SW 100.31'

HEI note, 1988
P&N reset CIM
PK S side 5-Oaks (9") NNW 72.15'
PK N side PP SSW 100.08'
PK E side 30" Oak SE 69.32'
PK NW side GP ENE 48.61'
C/L top hydt. NE 55.34'
Park Twp. cor. S 28.31'



*Historionically
being held as
Common*