

1993

OTTAWA COUNTY REMONUMENTATION

RECORDED

COMMISSION

LAND CORNER RECORDATION CERTIFICATE

93 DEC 15 AM 9:26

Filing Requirement of Act 74, Mich. P.A. 1970

Register of Deeds Stamp & File Number

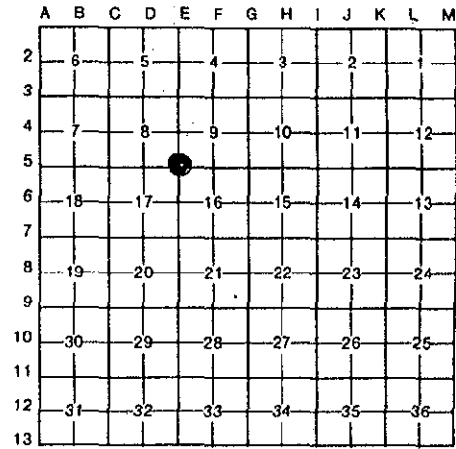
For corners in OTTAWA

Table with columns: Located In: (County), Corner Code #, and survey details for Public Land Survey, Property Controlling in Section, and Miscellaneous Property in Sec.

4. Lot No. , Recorded Plat
5. Private Claims

I, Randal J. Vugteveen, in a field survey on November 18, 1993, do hereby certify that under requirements of P.A. 74, Michigan P.A. of 1970, the corner points mentioned in lines 1 and 2 above were in conformance with regulations and rules therefore as required in the current manual of survey instructions of the United States Department of the Interior, Bureau of Land Management or by a decree of a Court of Law and/or that the corner points mentioned in lines 3, 4 and 5 above were in conformance with the rules of the Michigan Board of Land Surveyors or by a Decree of a Court of Law; established, re-established, monumented, re-monumented, recovered, found as expressed below:

NOTE: Not more than 4 corners, all in the same town and range, may be recorded on this certificate.



A. Description of original monument and accessories and/or subsequent restoration:

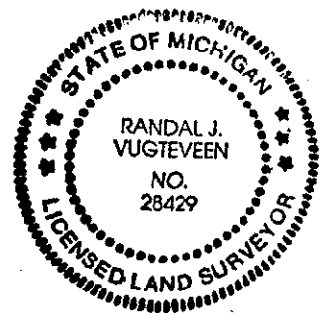
Table with 3 columns describing monuments from E-5 LCRC Liber 1, Page 259; E-5 LCRC Liber 5, Page 18; and E-5 LCRC Liber 5, Page 264.

B. Description of corner evidence found and/or method applied in restoring or reestablishing corner:

Table with 2 columns describing corner evidence found and/or method applied in restoring or reestablishing corner.

C. Description of monument for corner and accessories established to perpetuate locating the position of the corner:

E-5 Cast Iron Monument
Set Ottawa County Remon Tag & Nail in E side guide pole N38W 48.45'
Set Ottawa County Remon Tag & Nail in NW side P. pole N51E 58.83'
Set Ottawa County Remon Tag & Nail in N side 30" Twin Willow S60E 83.82'
Set Ottawa County Remon Tag & Nail in SE side P. Pole S46W 35.01'
SE brick corner #12813 building N34W 131.16'
Top centerline hydrant N67E 76.59'



Signed by [Signature] Date Dec 6, 1993
Surveyor's Michigan License No. 28429