

DEC 01 1993

LAND CORNER RECORDATION CERTIFICATE

93 NOV 11 AM 11:54

Filing Requirement of Act 74, Mich. P.A. 1970

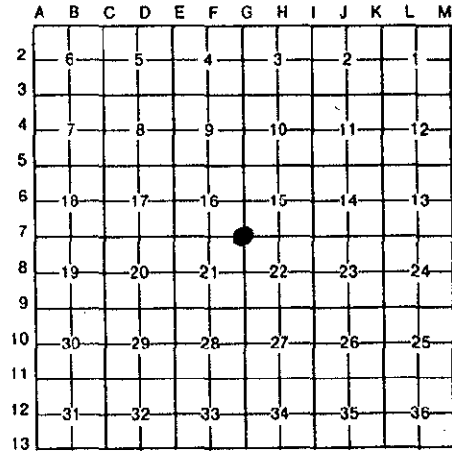
COMMISSION For corners in OTTAWA

REGISTER OF DEEDS OTTAWA COUNTY, MI

Table with columns: (County), Located In: (Township/Range/Section), Corner Code #. Includes entries for Public Land Survey, Property Controlling in Section, and Miscellaneous Property in Sec.

Register of Deeds Stamp & File Number

4. Lot No. , Recorded Plat
5. Private Claims



I, Randal J. Vugteveen in a field survey on September 3, 1993 do hereby certify that under requirements of P.A. 74, Michigan P.A. of 1970, the corner points mentioned in lines 1 and 2 above were in conformance with regulations and rules therefore as required in the current manual of survey instructions of the United States Department of the Interior, Bureau of Land Management or by a decree of a Court of Law and/or that the corner points mentioned in lines 3, 4 and 5 above were in conformance with the rules of the Michigan Board of Land Surveyors or by a Decree of a Court of Law; established, re-established, monumented, re-monumented, recovered, found as expressed below:

NOTE: Not more than 4 corners, all in the same town and range, may be recorded on this certificate.

A. Description of original monument and accessories and/or subsequent restoration: G-7 Corner common to Sections 15, 16, 21 & 22

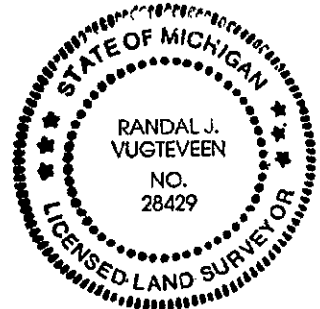
Table with two columns listing monument details: LCRC Liber 1, Page 259; Iron Pipe in Mon box; Nail in face of 28" Catalpa NE 53.10'; Nail in face of T. Pole NW 35.75'; Nail in face of 30" Maple SW 57.95'; Nail in face of P. Pole SE 43.00'; Nail in face of T. Pole SW 61.15'; St. Sign NW 44.95'; LCRC Liber 5, Page 237; PK over buried MH with 3/ PK straddlers; Nail in NE side P. Pole SE 49.02'; Centerline top of hydrant SE 56.65'; BT spike in W side 30" Maple SW 58.19'; Nail & cap in S side P. Pole W-NW 75.82'; PK Nail in S side L. Pole NW 55.69'

B. Description of corner evidence found and/or method applied in restoring or reestablishing corner: G-7 Found manhole on centerline 120th & James with notches on rim and accepted as a careful and faithful perpetuation of the position of the original corner

Centerline top of hydrant S35E 56.58'

C. Description of monument for corner and accessories established to perpetuate locating the position of the corner: G-7 Corner falls on manhole, could not set Ottawa County Remon Cap

- Set Ottawa County Remon Tag & Nail in E side P. Pole N28W 85.05'
Set Ottawa County Remon Tag & Nail in S side P. Pole S57E 57.59'
Set Ottawa County Remon Tag & nail in S side P. Pole N63E 63.33'
Set Ottawa County Remon Tag & Nail in N side 18" Maple S53W 84.66'
SW brick corner by windows #11971 N50E 108.72'



Signed by [Signature] Date Nov. 5, 1993
Surveyor's Michigan License No. 28429