

DEC 01 1993

OTTAWA COUNTY REMONUMENTATION

RECORDED

COMMISSION

LAND CORNER RECORDATION CERTIFICATE

93 NOV 11 AM 11:53

Filing Requirement of Act 74, Mich. P.A. 1970

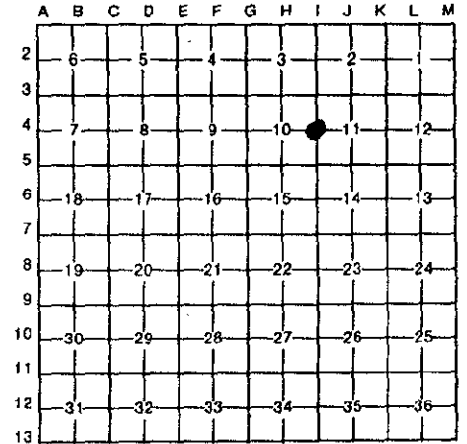
R. J. Vugteveen
REGISTER OF DEEDS
OTTAWA COUNTY, MI

For corners in OTTAWA

	Located In:	Corner Code --#
1. Public Land Survey	T <u>5N</u> R <u>15W</u>	I-4 (W 1/4 cor Section 11) Holland Twp
	T ___ R ___	_____
	T ___ R ___	_____
	T ___ R ___	_____
2. Property Controlling in Section	S ___ T ___ R ___	_____
	S ___ T ___ R ___	_____
3. Miscellaneous Property in Sec.	S ___ T ___ R ___	_____
	S ___ T ___ R ___	_____
4. Lot No. _____, Recorded Plat _____		
5. Private Claims _____		

Register of Deeds Stamp & File Number

I, Randal J. Vugteveen, in a field survey on September 16, 1993, do hereby certify that under requirements of P.A. 74, Michigan P.A. of 1970, the corner points mentioned in lines 1 and 2 above were in conformance with regulations and rules therefore as required in the current manual of survey instructions of the United States Department of the Interior, Bureau of Land Management or by a decree of a Court of Law and/or that the corner points mentioned in lines 3, 4 and 5 above were in conformance with the rules of the Michigan Board of Land Surveyors or by a Decree of a Court of Law; established, re-established, monumented, re-monumented, recovered, found as expressed below:



NOTE: Not more than 4 corners, all in the same town and range, may be recorded on this certificate.

A. Description of original monument and accessories and/or subsequent restoration:
I-4 1/4 corner common to Sections 10 & 11

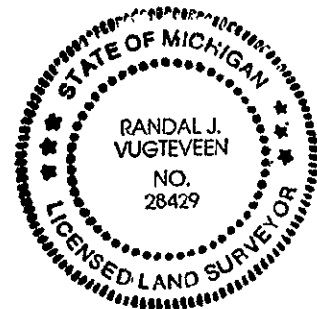
LCRC Liber 3, Page 155	LCRC Liber 5, Page 138
Steel Bar / P. Pole E-SE 84.98' / P. Pole N 117.72' / Centerline 112th Ave E 123' / Centerline Greenly St. N 15'	Cast Iron Monument / 5" Elm S 55.44' / 4" Twin Elm NW 58.72' / P. Pole E-SE 85.10' / P. Pole N 117.95' / Centerline Greenly St. N 15'

B. Description of corner evidence found and/or method applied in restoring or reestablishing corner:
I-4 Found cast iron monument 15' South of centerline Greenly & 121.5' West of centerline of 112th and accepted as a careful and faithful perpetuation of the position of the original corner

PK on top of sawed off P. Pole S80E 85.35' / Nail & Tag in S side P. Pole North 117.85'

C. Description of monument for corner and accessories established to perpetuate locating the position of the corner:
I-4 Cast Iron Monument

- Set Ottawa County Remon Tag & Nail on top of sawed off P. Pole S80E 85.17'
- Set Ottawa County Remon Tag & Nail on W side of P. Pole North 118.16'
- Set Ottawa County Remon Tag & Nail on E side 30" Willow South 215.68'
- Set "X" on top S. end culvert S85E 96.41'
- NE corner foundation house #3561 S10W 239.55'
- "X" on top N end culvert N70E 103.64'



Signed by *Randal J. Vugteveen* Date Nov. 5, 1993
 Surveyor's Michigan License No. 28429