

**SURVEY & REMONUMENTATION**

APR 05 1996

**OTTAWA COUNTY REMONUMENTATION**

**COMMISSION**

**LAND CORNER RECORDATION CERTIFICATE**  
**Filing Requirement of Act 74, Mich. P.A. 1970**

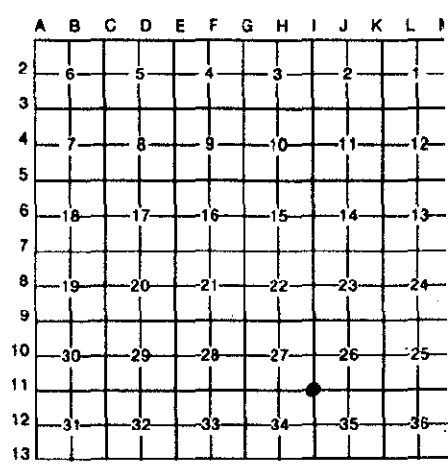
For corners in  
OTTAWA  
 (County)

	Located In:		Corner Code #
1. Public Land Survey	5N	15W	I-11 (SE cor Section 27) Holland Twp
	T	R	
	T	R	
	T	R	
2. Property Controlling in Section	S	T	R
	S	T	R
3. Miscellaneous Property in Sec.	S	T	R
	S	T	R

**RECORDED**  
 95 NOV 29 PM 1:43  
*Randy R. Redwood*  
 REGISTER OF DEEDS  
 OTTAWA COUNTY, MI  
**Register of Deeds Stamp & File Number**

4. Lot No. \_\_\_\_\_, Recorded Plat \_\_\_\_\_  
 5. Private Claims \_\_\_\_\_

I, Randal J. Vugteveen, in a field survey on November 17, 19 95, do hereby certify that under requirements of P.A. 74, Michigan P.A. of 1970, the corner points mentioned in lines 1 and 2 above were in conformance with regulations and rules therefore as required in the current manual of survey instructions of the United States Department of the Interior, Bureau of Land Management or by a decree of a Court of Law and/or that the corner points mentioned in lines 3, 4 and 5 above were in conformance with the rules of the Michigan Board of Land Surveyors or by a Decree of a Court of Law; established, re-established, monumented, re-monumented, recovered, found as expressed below:



**NOTE: Not more than 4 corners, all in the same town and range, may be recorded on this certificate.**

**A. Description of original monument and accessories and/or subsequent restoration:**  
 I-11 Common corner to Sections 26, 27, 34 & 35

1832 - Lyon	Liber 3, Page 22	Liber 2, Page 1
Set corner	Cast Iron mon	1" Pipe
Sugar N40 W8 12 Links	6" Willow NNE 22.03'	Mon. Box
Beech N61 1/2 E14 7 Links	8" Maple SE 38.73'	SE T.P. 57.22'
	6" Pine SSE 103.45'	NE fire hydrant 44.17'
		NW steel fence post 53.35'

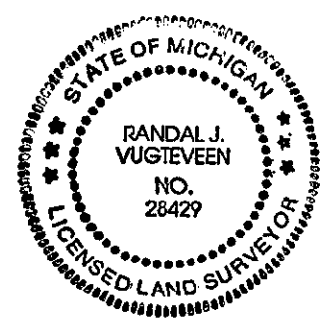
**B. Description of corner evidence found and/or method applied in restoring or reestablishing corner:**

I-11 Found 1" pipe over 1/2" rebar in mon box 3' N of centerline E 16th St. & 5' W of centerline Country Club Road and accepted as a careful and faithful perpetuation of the position of the original corner  
 Top hydrant NE 44.35'

**P.A. 345 OTTAWA COUNTY**  
**PEER APPROVED** 11/20/95  
*Randy R. Redwood*  
 ROR

**C. Description of monument for corner and accessories established to perpetuate locating the position of the corner:**

I-11 Removed pipe set 3/4" X 24" solid bar with Ottawa County Remon cap  
 Top hydrant AZ 38 deg 44.35'  
 Set Ottawa County Remon Nail & Tag in NE side p. pole Az. 145 deg 50.28'  
 Set Ottawa County Remon Nail & Tag in N side p. pole Az. 247 deg 101.95'  
 Set Ottawa County Remon Nail & Tag in NE side p. pole Az. 322 deg 60.63'  
 Set Ottawa County Remon Nail & Tag in NW side p. pole Az. 22 deg 72.30'  
 SE corner brick building Az. 300 deg 170.18'



Signed by *Randal J. Vugteveen*  
 Surveyor's Michigan License No. 28429

Date Nov. 20, 1995