

SURVEY & REMONUMENTATION

OTTAWA COUNTY REMONUMENTATION

RECORDED

APR 25 1995

LAND CORNER RECORDATION CERTIFICATE
Filing Requirement of Act 74, Mich. P.A. 1970

94 DEC -8 PM 12:34

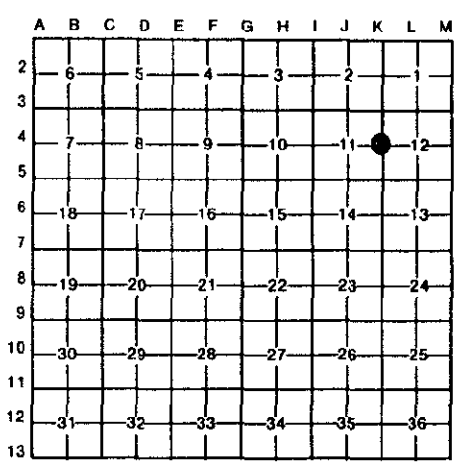
For corners in **COMMISSION OTTAWA**

Deborah A. Holloman
REGISTER OF DEEDS
OTTAWA COUNTY, MI

(County)	Located In:	Corner Code #
1. Public Land Survey	T <u>5N</u> R <u>15W</u>	K-4 (E 1/4 cor Sec. 11) Holland Twp
	T _____ R _____	_____
	T _____ R _____	_____
	T _____ R _____	_____
2. Property Controlling in Section	S _____ T _____ R _____	_____
	S _____ T _____ R _____	_____
3. Miscellaneous Property in Sec.	S _____ T _____ R _____	_____
	S _____ T _____ R _____	_____

Register of Deeds Stamp & File Number

4. Lot No. _____, Recorded Plat _____
5. Private Claims _____



Randal J. Vugteveen, in a field survey on November 15, 1994

I do hereby certify that under requirements of P.A. 74, Michigan P.A. of 1970, the corner points mentioned in lines 1 and 2 above were in conformance with regulations and rules therefore as required in the current manual of survey instructions of the United States Department of the Interior, Bureau of Land Management or by a decree of a Court of Law and/or that the corner points mentioned in lines 3, 4 and 5 above were in conformance with the rules of the Michigan Board of Land Surveyors or by a Decree of a Court of Law; established, re-established, monumented, re-monumented, recovered, found as expressed below:

NOTE: Not more than 4 corners, all in the same town and range, may be recorded on this certificate.

1. Description of original monument and accessories and/or subsequent restoration:

K-4 common corner to Sections 11 & 12	Liber 1, Page 591	Liber 6, Page 65
1832 - Brookfield	Set cast iron mon.	Fnd 1/2" Iron
Set post	RR spike	East 33.00' 1/2 Iron with HEI cap
Beech 10" N15W 4'	S end culvert WSW 20.60'	ESE 25.34' "X" E. side MH rim
Sugar 10" S59E 18'	N end culvert WNW 20.90'	SE 30.69' SW cor. conc. Drive
	"T" iron fence post W 41.70'	S 8' to E-W occupation line

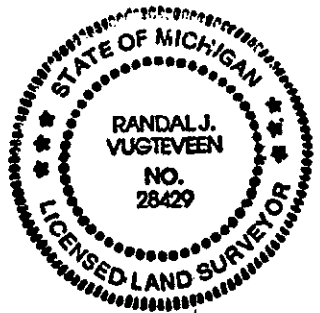
2. Description of corner evidence found and/or method applied in restoring or reestablishing corner:
K-4 Found 1/2 bar in mon box and accepted as a careful and faithful perpetuation of the position of the original corner

East 33.00' 1/2 Iron with HEI cap
ESE 25.34' "X" E. side MH rim
SE 30.69' SW cor. conc. Drive
S 8' to E-W occupation line

RA. 345 OTTAWA COUNTY
PEER APPROVED 11/21/94
Randal J. Vugteveen

3. Description of monument for corner and accessories established to perpetuate locating the position of the corner:
K-4 Removed bar, set 3/4" X 24" solid rod in Mon Box with Ottawa County Remon Cap

NW corner brick house #3580 S66E 134.29'
SW corner brick house #3580 S43E 166.42'
Set Ottawa County Remon Tag & nail in S. side Power Pole E 30.26' N90E
Set Ottawa County Remon Tag & nail in bit. sidewalk N45W 36.16'
Set Ottawa County Remon Tag & nail in bit. sidewalk S45W 35.26'



Signed by *Randal J. Vugteveen* Date Nov. 21, 1994
Surveyor's Michigan License No. 28429