

**SURVEY & REMONUMENTATION** OTTAWA COUNTY REMONUMENTATION

RECORDED

APR 25 1995

LAND CORNER RECORDATION CERTIFICATE 94 DEC -8 PM 12: 32

Filing Requirement of Act 74, Mich. P.A. 1970

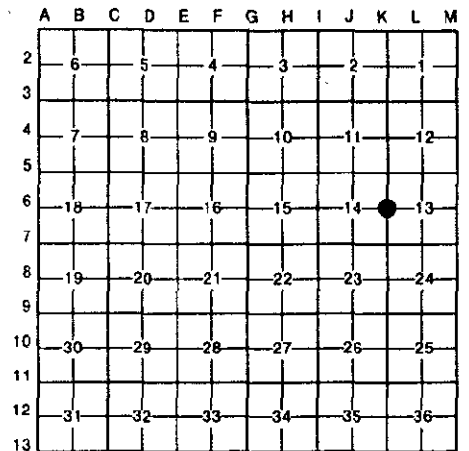
*D. J. Robinson*  
REGISTER OF DEEDS  
OTTAWA COUNTY, MI

for corners in **COMMISSION**  
**OTTAWA**

(County)	Located In:	Corner Code #
Public Land Survey	T 5N R 15W	K-6 (E 1/4 of Sec. 14) Holland Twp.
	T _____ R _____	_____
	T _____ R _____	_____
	T _____ R _____	_____
Property Controlling in Section	S _____ T _____ R _____	_____
	S _____ T _____ R _____	_____
Miscellaneous Property in Sec.	S _____ T _____ R _____	_____
	S _____ T _____ R _____	_____

Register of Deeds Stamp & File Number

Lot No. \_\_\_\_\_, Recorded Plat \_\_\_\_\_  
Private Claims \_\_\_\_\_



Randal J. Vugteveen, in a field survey on November 15, 1994

do hereby certify that under requirements of P.A. 74, Michigan P.A. of 1970, the corner points mentioned in lines 1 and 2 above were in conformance with regulations and rules therefore as required in the current manual of survey instructions of the United States Department of the Interior, Bureau of Land Management or by a decree of a Court of Law and/or that the corner points mentioned in lines 3, 4 and 5 above were in conformance with the rules of the Michigan Board of Land Surveyors or by a Decree of a Court of Law; established, re-established, monumented, re-monumented, recovered, found as expressed below:

**NOTE: Not more than 4 corners, all in the same town and range, may be recorded on this certificate.**

Description of original monument and accessories and/or subsequent restoration:

K-6 common corner to Sections 13 & 14	Liber 1, Page 651
1832 - Brookfield	Found "T" iron centerline of RDS
Set post	Power pole NE 39.53'
Sugar 30" S35E 20 Links	Power pole NW 35.61'
hemlock 16" N49W 11 Links	30" Oak SW 39.97'
	Centerline Street Sign SE 37.05'

Description of corner evidence found and/or method applied in restoring or reestablishing corner:

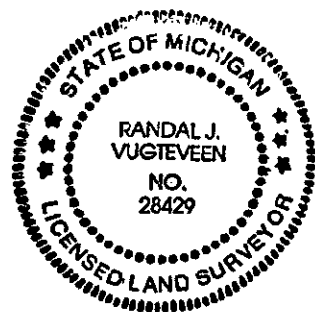
K-6 Found CIM in mon box at centerline "X" of Felch & 140th (no cover) and accepted as a careful and faithful perpetuation of the position of the original corner	
30" Oak SW 40'	

PA. 345 OTTAWA COUNTY  
PEER APPROVED 11/21/94

*Harold D. Nedewell*

Description of monument for corner and accessories established to perpetuate locating the position of the corner:

K-6 Cast Iron Monument in Mon Box	
Set Ottawa County Remon Tag & Nail in SE side P. pole N47E 45.06'	
Set Ottawa County Remon Tag & Nail in SW side P. pole N48W 48.29'	
Set Ottawa County Remon Tag & Nail in SE side 30" tree S43W 41.08'	
Set Ottawa County Remon Tag & Nail in NE side P. pole S32E 60.28'	
Top of hydrant S34E 56.20'	



Signed by *Randal J. Vugteveen* Date Nov. 21, 1994  
Surveyor's Michigan License No. 28429