

FEB 24 2000

OTTAWA COUNTY REMONUMENTATION
LAND CORNER RECORDATION CERTIFICATE
Filing Requirement of Act 74, Mich. P.A. 1970

RECORDED

99 OCT 27 PM 1:50

SECTION

For corners in

Ottawa
(County)

Located In:

Corner Code #

Jim Sibley
REGISTER OF DEEDS
OTTAWA COUNTY, MI

- 1. Public Land Survey T5N R15W L-13
T R
T R
T R
South 1/4 corner
Section 36,
Holland Township
- 2. Property Controlling S T R
in Section S T R
Property in Sec. S T R
- 3. Miscellaneous S T R
Property in Sec. S T R

Register of Deeds Stamp & File Number

- 4. Lot No. _____, Recorded Plat _____
- 5. Private Claims _____

1	A	B	C	D	E	F	G	H	I	J	K	L	M
2	6	5	4	3	2	1							
3													
4	7	8	9	10	11	12							
5													
6	18	17	16	15	14	13							
7													
8	19	20	21	22	23	24							
9													
10	30	29	28	27	26	25							
11													
12	31	32	33	34	35	36							
13													

I, Steve Lampen, in a field survey on September 15, 1999, do hereby certify that under requirements of P.A. 74, Michigan P.A. of 1970, the corner points mentioned in lines 1 and 2 above were in conformance with regulations and rules therefore as required in the current manual of survey instructions of the United States Department of the Interior, Bureau of Land Management or by a decree of a Court of Law and/or that the corner points mentioned in lines 3, 4 and 5 above were in conformance with the rules of the Michigan Board of Land Surveyors or by a Decree of a Court of Law; established, re-established, monumented, re-monumented, recovered, found as expressed below:

NOTE: Not more than 4 corners, all in the same town and range, may be recorded on this certificate.

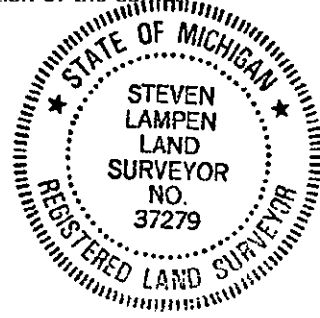
- A. Description of original monument and accessories and/or subsequent restoration:
- | | | |
|----------------------|-------------------------------|---------------------------------|
| L-13 | LCRC, L3, P317 - Clapp - 1978 | LCRC, L5, P124 - Englert - 1984 |
| GLO - sibley - 1831 | Found 1 1/2" Steel bar | Found iron bar, set C.I.M. |
| Set HMP | 39.47 Street sign SSW | 15" Maple SSW 49.38 |
| Beech 8 N 75 E 47 | 62.38 10" Poplar SW | 15" Poplar S 58.06 |
| Ironwood 7 N 14 W 25 | 30.28 14" Maple SE | 17" Maple SE 57.48 |
| | 99.82 SW house corner NE | Allegan corner E 33.15 |
| | | Triple 8" tree N 30.72 |

B. Description of corner evidence found and/or method applied in restoring or reestablishing corner:
L-13 Found 2 corners 33' apart. LCRC, L3, P317 = East corner, LCRC, L5, P124 = West corner. See sketch on back. Conclusion of field evidence is that the East iron is the Ottawa County corner and the West iron is the Allegan County Corner. See sketch on back.

Replaced 1 1/4" pipe with an Ottawa County Remonumentation iron and cap and accepted it a careful and faithful perpetuation of the position of the original corner.

PA 340 OTTAWA COUNTY
RECORDED 9/20/99
ADN

- C. Description of monument for corner and accessories established to perpetuate locating the position of the corner:
- L-13 Ottawa County Remonumentation iron and cap in monument box
Azimuth = Michigan State Plane grid direction
- | | | |
|---|----------|--------|
| SW corner house foundation, stone | 33° 27' | 99.52 |
| NE corner house brick | 123° 13' | 106.56 |
| SW corner house foundation | 151° 11' | 133.76 |
| SE corner house brick | 218° 51' | 182.92 |
| SE corner house foundation | 49° 25' | 125.08 |
| NW corner house brick | 236° 06' | 176.40 |
| L-1, T4N, R15W | 271° 10' | 33.12 |
| Centerline asphalt road pavement to South | 270° 33' | |



Receipt #61757

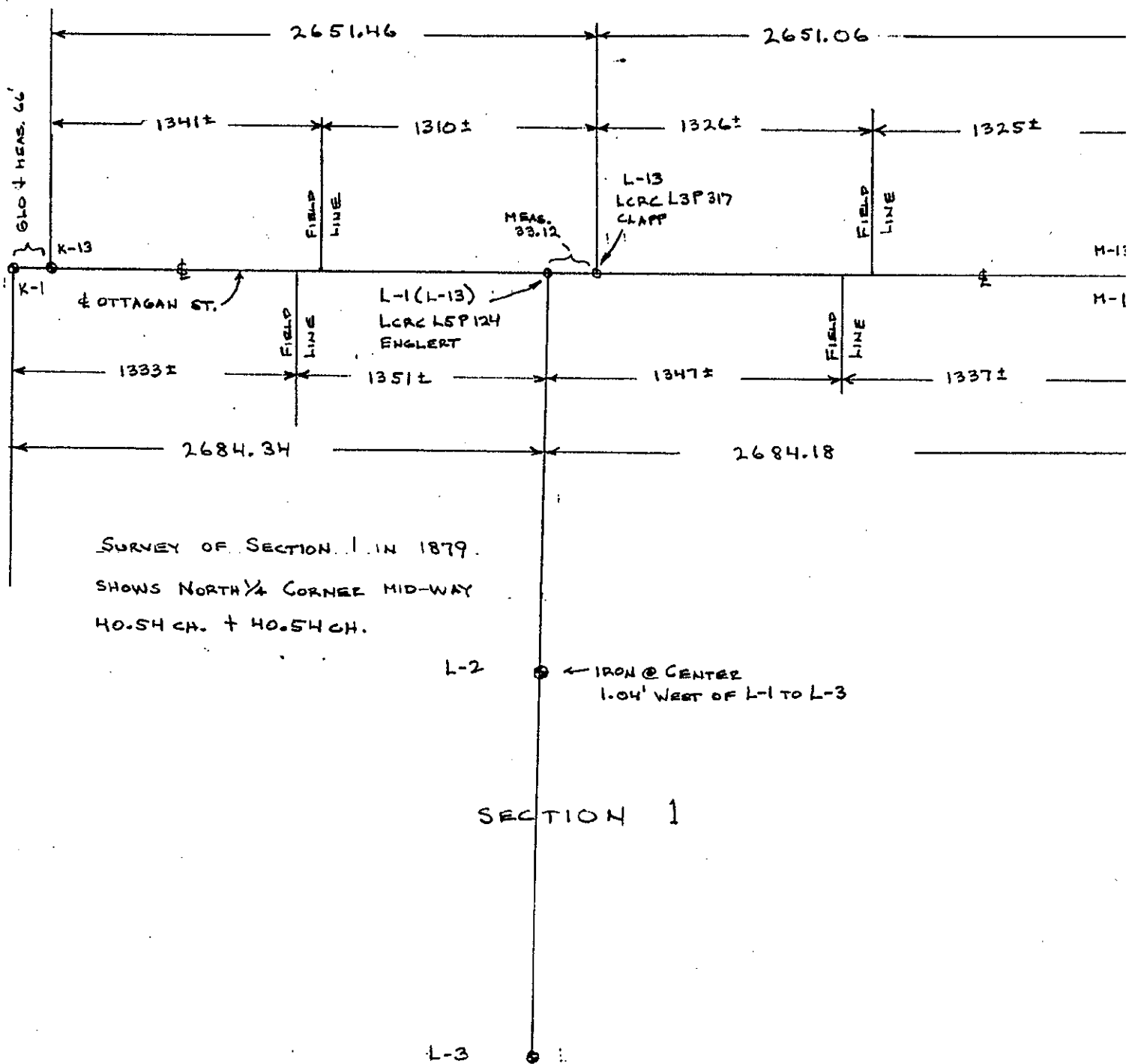
Signed by Steven Lampen Date OCTOBER 16, 1999

Surveyor's Michigan License No. 37279

FEB 24 2000

SECTION

SECTION 36



SURVEY OF SECTION 1 IN 1879.
 SHOWS NORTH ¼ CORNER MID-WAY
 40.54 CH. + 40.54 CH.

SECTION 1