

SURVEY & REMONUMENTATION

APR 24 1995

**OTTAWA COUNTY REMONUMENTATION
LAND CORNER RECORDATION CERTIFICATE
Filing Requirement of Act 74, Mich. P.A. 1970**

RECORDED

94 DEC 14 AM 9:42

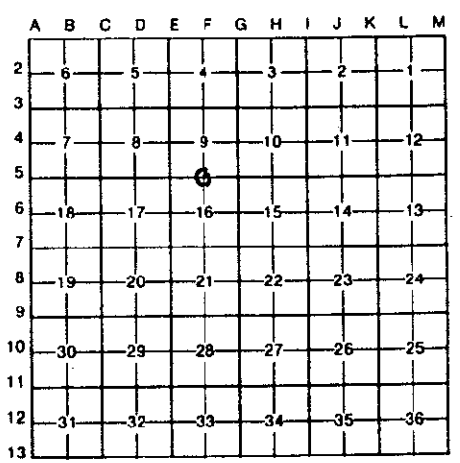
For corners **COMMISSION**

Richard Robinson
REGISTER OF DEEDS
OTTAWA COUNTY, MI

Ottawa (County)	Located In:	Corner Code #
1. Public Land Survey	T 5N R 16W	F-5 N1/4 Cor
	T R	Sec 16
	T R	Park Twp.
2. Property Controlling in Section	S T R	
	S T R	
3. Miscellaneous Property in Sec.	S T R	
	S T R	

Register of Deeds Stamp & File Number

4. Lot No. _____, Recorded Plat _____
5. Private Claims _____



I, John P. Clapp, in a field survey on December 1, 1994, do hereby certify that under requirements of P.A. 74, Michigan P.A. of 1970, the corner points mentioned in lines 1 and 2 above were in conformance with regulations and rules therefore as required in the current manual of survey instructions of the United States Department of the Interior, Bureau of Land Management or by a decree of a Court of Law and/or that the corner points mentioned in lines 3, 4 and 5 above were in conformance with the rules of the Michigan Board of Land Surveyors or by a Decree of a Court of Law; established, re-established, monumented, re-monumented, recovered, found as expressed below:

NOTE: Not more than 4 corners, all in the same town and range, may be recorded on this certificate.

A. Description of original monument and accessories and/or subsequent restoration:

F-5 Govt Land Office Survey Notes 1832-Surveyor, Calvin Britain Set 1/2 mile post 10" Beech N41°E 27 links 12" Beech S36°W 10 links	F-5 Recorded in Liber 1, Page 111 Oct. 7, 1971 Fd 2" round iron 10" Tw Beech S70°E 77.76' 30" Beech SW 65.56' 15" Red Pine NE 86.66' NE Cor Conc Pillar SW 46.05' SW Cor Bldg, NW 82.74'	F-5 Recorded in Liber 3 Page 313, Nov. 30, 1978 Fd 1 3/4" rd steel plug in conc. road 14" Maple S72°E 59.35' NW Cor Conc Pillar S43°E 46.80' NE Cor Conc Pillar S46°W 46.10' SE Cor siding of store bldg N36°W 64.28'
---	--	--

3. Description of corner evidence found and/or method applied in restoring or reestablishing corner:

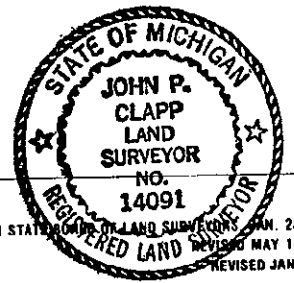
F-5 Found 3/4" steel pin in concrete over concrete monument in monument box and accepted it as a careful and faithful perpetuation of the position of the original corner	NE Corner Pillar AZ 225° 46.05'	 PEER APPROVED 12/12/94
SE Corner Siding at Store Building	AZ 323° 64.25'	
Found Scar in N Side 26" Maple	AZ 108° 59.40'	

C. Description of monument for corner and accessories established to perpetuate locating the position of the corner:

F-5 Set O.C. Remon Iron and Cap in Monument Box		
O.C. Remon Tag & Nail in side 12" Twin Maple	AZ. 30°	78.40'
O.C. Remon Tag & Nail in side 26" Maple	AZ. 108°	59.60'
O.C. Remon Tag & Nail in side 38" Beech	AZ. 214°	67.94'
SW Cor Concrete Foundation of Porch	AZ. 305°	78.93'

Signed by John P. Clapp
Surveyor's Michigan License No. 14091

Date Dec 5, 1994



FORM APPROVED BY MICHIGAN STATE BOARD OF LAND SURVEYORS JAN. 28, 1971
REVISED MAY 14, 1975
REVISED JAN., 1983