

OTTAWA COUNTY REMONUMENTATION

COMMISSIONER

LAND CORNER RECORDATION CERTIFICATE
Filing Requirement of Act 74, Mich. P.A. 1970

Deputy Clerk
REGISTER OF DEEDS
OTTAWA COUNTY, MI

For corners in
Ottawa

(County)

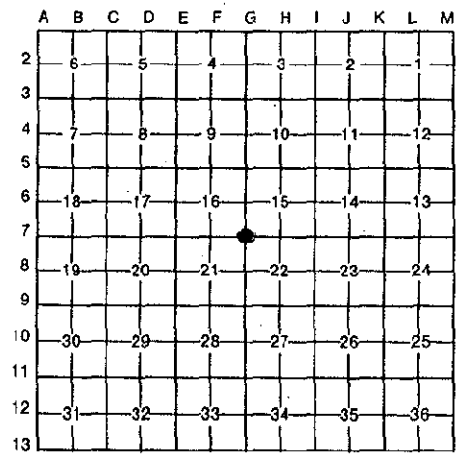
Located In:

Corner Code #

1. Public Land Survey	T	5N	R	16W	G-7 (NW Cor Sec 22)
	T		R		Park Twp.
	T		R		
	T		R		
2. Property Controlling in Section	S		T	R	
	S		T	R	
3. Miscellaneous Property in Sec.	S		T	R	
	S		T	R	

Register of Deeds Stamp & File Number

4. Lot No. _____, Recorded Plat _____
5. Private Claims _____



I, **David R. Greer**, in a field survey on **October 8**, 19 **93**, do hereby certify that under requirements of P.A. 74, Michigan P.A. of 1970, the corner points mentioned in lines 1 and 2 above were in conformance with regulations and rules therefore as required in the current manual of survey instructions of the United States Department of the Interior, Bureau of Land Management or by a decree of a Court of Law and/or that the corner points mentioned in lines 3, 4 and 5 above were in conformance with the rules of the Michigan Board of Land Surveyors or by a Decree of a Court of Law; established, re-established, monumented, re-monumented, recovered, found as expressed below:

NOTE: Not more than 4 corners, all in the same town and range, may be recorded on this certificate.

A. Description of original monument and accessories and/or subsequent restoration:

Recorded in Liber 5 Page 130 June 17, 1984

G-7
Cast Iron Monument
34" Maple NE 69.80'
27" Maple SE 61.52'
29" Maple SW 53.60'
Power Pole WNW 88.27'

Recorded in Liber 1 Page 361, May 11, 1972

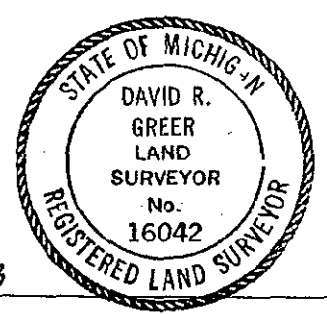
Found Nail in Top of 1" Pipe
Nail in face of 30" Maple NE 68.93'
Nail in face of 25" Maple SW 52.63'
Nail in face of 33" Maple SE 77.40'
Nail in face of Power Pole NE 66.55'

B. Description of corner evidence found and/or method applied in restoring or reestablishing corner:

G-7
Found cast iron monument and accepted it as a careful and faithful perpetuation of the position of the original corner
34" Maple NE 69.80' Nail in face of 30" Maple NE 68.93'
27" Maple SE 61.52' Nail in Face of 33" Maple SE 77.40'
Power Pole WNW 88.27' Power Pole NE 66.55'

C. Description of monument for corner and accessories established to perpetuate locating the position of the corner:

G-7
Found C.I.M. in monument box
AZ - Michigan State Grid Direction
Found Nail & Tag No. 16042 in North Side 22" Maple AZ. 247°50' 69.02'
NW Cor House Foundation AZ. 138°54' 109.87'
CL to Hydrant AZ. 36°12' 51.09'
Found Nail & Tag 16042 in SW Side 18" Maple AZ. 312°13' 70.38'



Signed by *David R. Greer*

Date **10/8/93**

Surveyor's Michigan License No. **16042**