

OTTAWA COUNTY REMONUMENTATION

LAND CORNER RECORDATION CERTIFICATE
Filing Requirement of Act 74, Mich. P.A. 1970

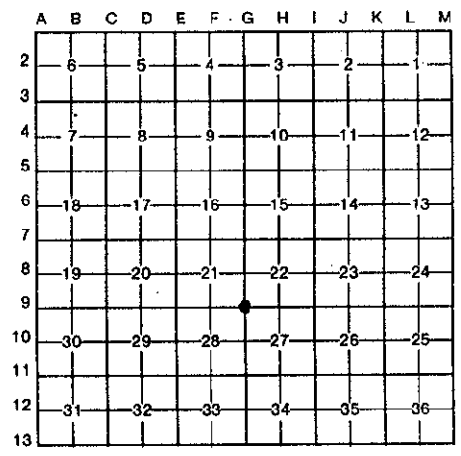
David R. Greer
REGISTER OF DEEDS
OTTAWA COUNTY, MI

For corners in
Ottawa

	Located In:	Corner Code #
1. Public Land Survey	T <u>5N</u> R <u>16W</u>	G-9 (SW Sec 22)
	T _____ R _____	Park Twp.
	T _____ R _____	
	T _____ R _____	
2. Property Controlling in Section	S _____ T _____ R _____	
	S _____ T _____ R _____	
3. Miscellaneous Property in Sec.	S _____ T _____ R _____	
	S _____ T _____ R _____	

Register of Deeds Stamp & File Number

- 4. Lot No. _____, Recorded Plat _____
- 5. Private Claims _____



I, **David R. Greer**, in a field survey on **October 8**, 19 **93**, do hereby certify that under requirements of P.A. 74, Michigan P.A. of 1970, the corner points mentioned in lines 1 and 2 above were in conformance with regulations and rules therefore as required in the current manual of survey instructions of the United States Department of the Interior, Bureau of Land Management or by a decree of a Court of Law and/or that the corner points mentioned in lines 3, 4 and 5 above were in conformance with the rules of the Michigan Board of Land Surveyors or by a Decree of a Court of Law; established, re-established, monumented, re-monumented, recovered, found as expressed below:

NOTE: Not more than 4 corners, all in the same town and range, may be recorded on this certificate.

A. Description of original monument and accessories and/or subsequent restoration:

Recorded in Liber 1 Page 365, May 11, 1972	Recorded in Liber 5, Page 130, June 27, 1984
G-9	G-9
Found Iron Pipes	Cast Iron Monument
CL Street Sign SE 35.85'	36" Maple NE 67.70'
Nail in face of 30" Beech SE 51.93'	Power Pole ESE 77.01'
Nail in face of Tele. Pole SE 65.78'	Twin 18" Beech SE 72.17'
Nail in face of 28" Maple NE 67.38'	Power Pole NW 56.13'
Nail in face of P. Pole NW 55.65'	

B. Description of corner evidence found and/or method applied in restoring or reestablishing corner:

G-9

Found cast iron monument and accepted it as a careful and faithful perpetuation of the position of the original corner

36" Maple	NE	67.70'
Power Pole	ESE	77.01'
Twin 18" Beech	SE	72.17'
Power Pole	NW	56.13'

C. Description of monument for corner and accessories established to perpetuate locating the position of the corner:

G-9

Found C.I.M. in monument box. Set O.C. Remonumentation iron & cap

AZ - Michigan State Grid Direction

NE Cor Garage Foundation	AZ. 332°51'	204.21'
O.C. Remon tag & nail in SW Side Power Pole	AZ. 296°39'	56.20'
NE Cor House, Brick	AZ. 232°15'	146.80'
CL Top of Hydrant	AZ. 170°50'	150.44'
O.C. Remon tag & nail in SW Side 20" Beech	AZ. 153°28'	75.81'



Signed by *David R. Greer* Date 10/8/93

Surveyor's Michigan License No. 16042