

1993

OTTAWA COUNTY REMONUMENTATION

93 NOV -8 PM 1:53

COMMUNITY

LAND CORNER RECORDATION CERTIFICATE  
Filing Requirement of Act 74, Mich. P.A. 1970

*Phyllis Robinson*  
REGISTER OF DEEDS  
OTTAWA COUNTY, MI

For corners in  
Ottawa

(County)

Located In:

Corner Code #

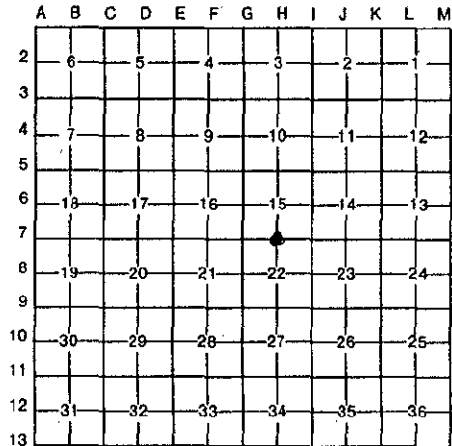
1. Public Land Survey	T	5N	R	16W	H-7 (N 1/4 Sec 22)
	T		R		Park Twp.
	T		R		
	T		R		
2. Property Controlling in Section	S		T	R	
	S		T	R	
3. Miscellaneous Property in Sec.	S		T	R	
	S		T	R	

Register of Deeds Stamp & File Number

4. Lot No. \_\_\_\_\_, Recorded Plat \_\_\_\_\_  
5. Private Claims \_\_\_\_\_

I, David R. Greer, in a field survey on October 8, 19 93, do hereby certify that under requirements of P.A. 74, Michigan P.A. of 1970, the corner points mentioned in lines 1 and 2 above were in conformance with regulations and rules therefore as required in the current manual of survey instructions of the United States Department of the Interior, Bureau of Land Management or by a decree of a Court of Law and/or that the corner points mentioned in lines 3, 4 and 5 above were in conformance with the rules of the Michigan Board of Land Surveyors or by a Decree of a Court of Law; established, re-established, monumented, re-monumented, recovered, found as expressed below:

NOTE: Not more than 4 corners, all in the same town and range, may be recorded on this certificate.



A. Description of original monument and accessories and/or subsequent restoration:

Recorded in Liber 1 Page 361, May 11, 1972	Recorded in Liber 2 Page 733, Jan. 14, 1975
H-7	H-7
Nail in face of 15" Cherry NW 55.80'	Found Angle Iron below FD. 1/2" Re-Rod
Nail in face of 29" Cherry N 38.52'	Set Cast Iron Monument
Nail in face of 18" Maple SE 68.63	29" Black Cherry N 38.52'
	SE Cor House NW 123.34'
	14" Oak NE 115.60'
	4" Red Pine SSE 41.79'
	Black Cherry Cluster SSW 75.13'

B. Description of corner evidence found and/or method applied in restoring or reestablishing corner:

H-7  
Found cast iron monument and accepted it as a careful and faithful perpetuation of the position of the original corner

SE Cor House NW 123.34'
14" Oak NE 115.60'
4" Red Pine SSE 41.79'
Black Cherry Cluster SSW 75.13'

C. Description of monument for corner and accessories established to perpetuate locating the position of the corner:

H-7  
Found C.I.M. in monument box raised with O.C. Remonumentation Iron & Cap

AZ - Michigan State Grid Direction

NE Cor House Foundation	AZ. 345°54' 149.98'
NE Cor House Foundation	AZ. 147°22' 186.94'
NE Cor. Garage Foundation	AZ. 189°15' 133.26'
O.C. Remon tag & nail in SE Side 10" Cherry	AZ. 41°42' 71.01'



Signed by David R. Greer Date 10/8/93

Surveyor's Michigan License No. 16042