

OTTAWA COUNTY REMONUMENTATION

LAND CORNER RECORDATION CERTIFICATE
Filing Requirement of Act 74, Mich. P.A. 1970

Dorothy K. Callahan
REGISTER OF DEEDS
OTTAWA COUNTY, MI

For corners in
Ottawa

(County)

Located In:

Corner Code #

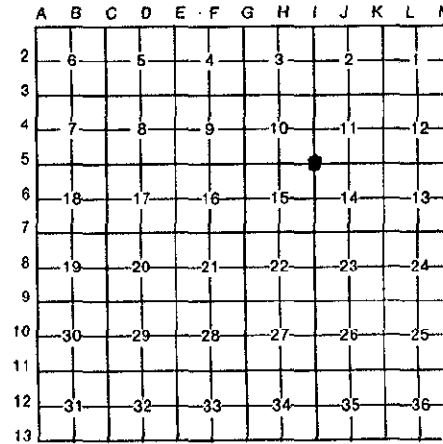
1. Public Land Survey	T	5N	R	16W	I-5 (SE Sec 10)
	T		R		Park Twp.
	T		R		
	T		R		
2. Property Controlling in Section	S		T	R	
	S		T	R	
3. Miscellaneous Property in Sec.	S		T	R	
	S		T	R	

Register of Deeds Stamp & File Number

- 4. Lot No. _____, Recorded Plat _____
- 5. Private Claims _____

I, **David R. Greer**, in a field survey on **September 15**, 19 **93**, do hereby certify that under requirements of P.A. 74, Michigan P.A. of 1970, the corner points mentioned in lines 1 and 2 above were in conformance with regulations and rules therefore as required in the current manual of survey instructions of the United States Department of the Interior, Bureau of Land Management or by a decree of a Court of Law and/or that the corner points mentioned in lines 3, 4 and 5 above were in conformance with the rules of the Michigan Board of Land Surveyors or by a Decree of a Court of Law; established, re-established, monumented, re-monumented, recovered, found as expressed below:

NOTE: Not more than 4 corners, all in the same town and range, may be recorded on this certificate.



A. Description of original monument and accessories and/or subsequent restoration:

Recorded in Liber 1 Page 229, Jan. 11, 1972

I-5
 Found Wagon Skein
 Nail in face of Power Pole NE 85.87'
 Nail in face of 18" Maple NE 47.80'
 Nail in face of 18" Maple NW 75.64'
 Nail in face of Tele. Pole SE 36.82'
 18" Maple SW 74.63'

Recorded in Liber 5 Page 143, June 27, 1984

I-5
 Cast Iron Monument
 16" Maple NE 60.76'
 LP SE 38.46'
 21" Maple SW 74.32'
 20" Maple NW 75.76'

B. Description of corner evidence found and/or method applied in restoring or reestablishing corner:

I-5
 Found cast iron monument and accepted it as a careful and faithful perpetuation of the position of the original corner
 Found Cast Iron Monument
 16" Maple NE 60.76' Nail in face of Power Pole NE 85.87'
 LP SE 38.46' Nail in face of 18" Maple NE 47.80'
 21" Maple SW 74.32' Nail in face of Tele. Pole SE 36.82'
 20" Maple NW 75.76'

C. Description of monument for corner and accessories established to perpetuate locating the position of the corner:

I-5
 Found C.I.M. in monument box
 AZ - Michigan State Grid Direction
 O.C. Remon tag & nail in N Side 26" Maple AZ. 259°09' 120.74'
 O.C. Remon tag & nail in S Side 12" Maple AZ. 247°06' 113.08'
 O.C. Remon tag & nail in W Side 22" Maple AZ. 26°20' 74.07'
 NW Cor Garage Foundation AZ. 135°13' 131.61'

David R. Greer

Signed by _____ Date **9/15/93**

Surveyor's Michigan License No. **16042**

