

**SURVEY & REMONUMENTATION**

DEC 01 1998

SECTION

Ottawa County Remonumentation  
**LAND CORNER RECORDATION CERTIFICATE**  
 Filing Requirement of Act 74, Mich. P.A. 1970

RECORDED

98 MAY 22 PM 4:06

For corners in

<u>Ottawa</u> (County)	Located In:	Corner Code #
1. Public Land Survey	T <u>6N</u> R <u>13W</u>	<u>A-3</u> (NW, 7)
	T _____ R _____	<u>Georgetown Twp.</u>
	T _____ R _____	_____
	T <u>6N</u> R <u>14W</u>	<u>M-3</u>
2. Property Controlling in Section	S _____ T _____ R _____	_____
	S _____ T _____ R _____	_____
3. Miscellaneous Property in Sec.	S _____ T _____ R _____	_____
	S _____ T _____ R _____	_____
4. Lot No. _____, Recorded Plat _____		
5. Private Claims _____		

*Ray Schultz*  
 REGISTER OF DEEDS  
 OTTAWA COUNTY, MI

Register of Deeds Stamp & File Number

I, John C. Bueche, in a field survey on March 2, 19 98, do hereby certify that under requirements of P.A. 74, Michigan P.A. of 1970, the corner points mentioned in lines 1 and 2 above were in conformance with regulations and rules therefore as required in the current manual of survey instructions of the United States Department of the Interior, Bureau of Land Management or by a decree of a Court of Law and/or that the corner points mentioned in lines 3, 4 and 5 above were in conformance with the rules of the Michigan Board of Land Surveyors or by a Decree of a Court of Law; established, re-established, monumented, re-monumented, recovered, found as expressed below:

A	B	C	D	E	F	G	H	I	J	K	L	M
2	6	5	4	3	2	1						
3												
4	7	8	9	10	11	12						
5												
6	18	17	16	15	14	13						
7												
8	19	20	21	22	23	24						
9												
10	30	29	28	27	26	25						
11												
12	31	32	33	34	35	36						
13												

**NOTE: Not more than 4 corners, all in the same town and range, may be recorded on this certificate.**

A. Description of original monument and accessories and/or subsequent restoration:

A-3	LCRC Remon. L1-P336, Oct., 1994
Lucius Lyon, 1831	Found cast iron mon. in Mon. Box
West Boundary at post	Ottawa Co. Remon. Tag & Nail in N side fence post E 40.06'
No witnesses	Ottawa Co. Remon. Tag & Nail in N side 10" Elm W 63.21'
	Ottawa Co. Remon. Tag & Nail in N end 15" CMP N 65° E 44.01'
Common corner with	Ottawa Co. Remon. Tag & Nail in S end 15" CMP S 50° E 38.55'
M-3, 6-14	C/L of 48th Avenue

B. Description of corner evidence found and/or method applied in restoring or reestablishing corner:

A-3 Found cast iron mon. in Mon. Box

As per above wit.

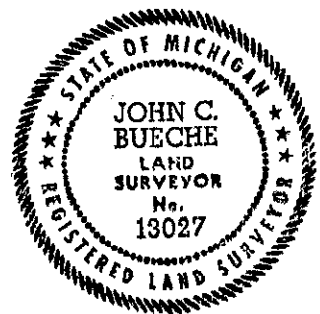
PA. 345 OTTAWA COUNTY  
 PEER APPROVED 4/20/98

*YDN*

And is accepted as a careful and faithful perpetuation of the position of the original corner.

C. Description of monument for corner and accessories established to perpetuate locating the position of the corner:

A-3 Cast iron mon. in Mon. Box  
 Corner common to M-3 (E 1/4, Sec. 1, 6-14)  
 Ottawa Co. Remon. Tag & Nail in N side fence post E 40.06'  
 Ottawa Co. Remon. Tag & Nail in N side 10" Elm W 63.21'  
 Ottawa Co. Remon. Tag & Nail in N end 15" CMP N 65° E 44.01'  
 Ottawa Co. Remon. Tag & Nail in S end 15" CMP S 50° E 38.55'  
 On C/L bit. N-S, on fence & tree E & W



\$ 11.00 CORNER  
 \$ 2.00 PHOTO

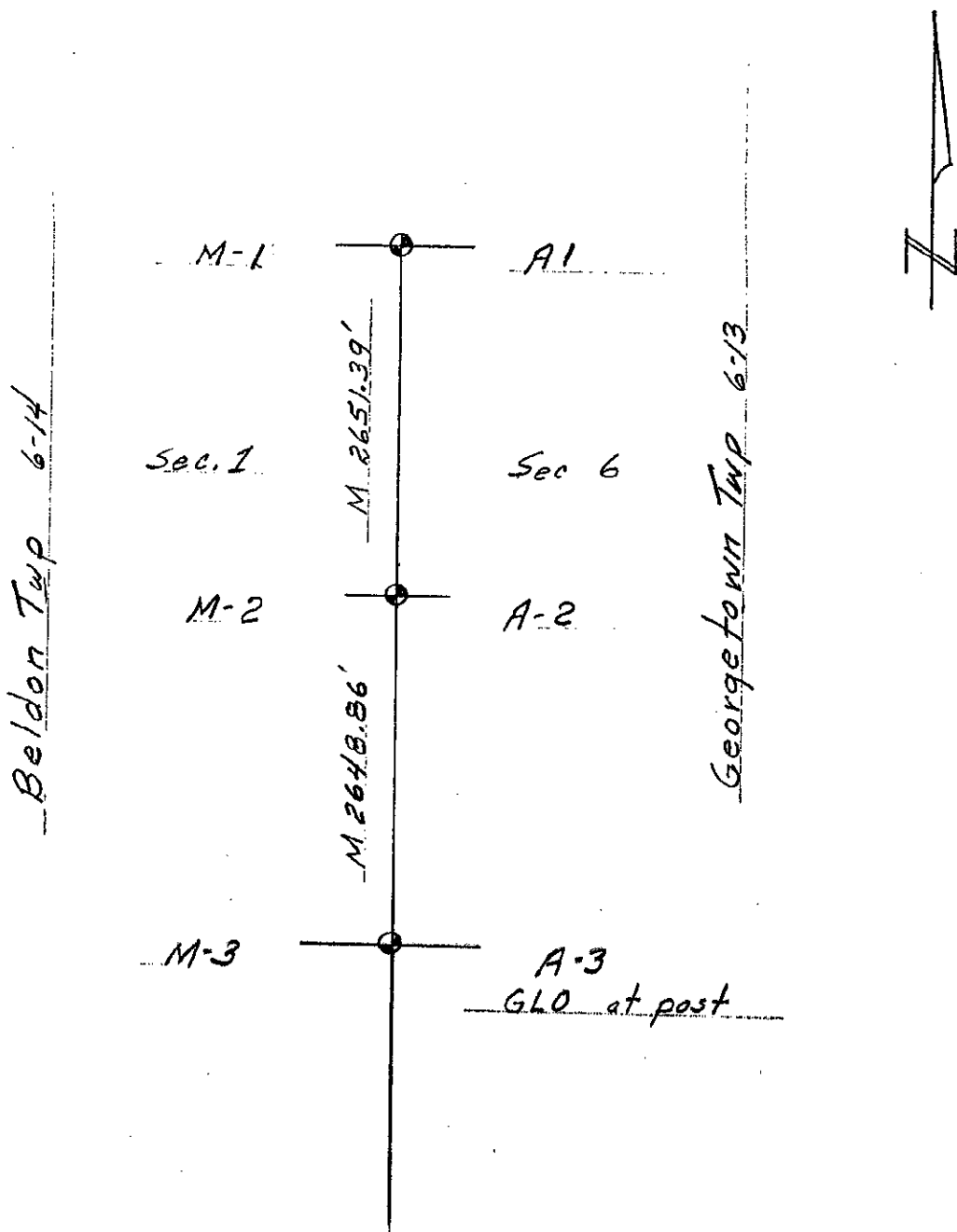
Signed by John C. Bueche  
 John C. Bueche, P.S. 13027  
 Surveyor's Michigan License No. \_\_\_\_\_

Date 3-13-98

SURVEY &  
REMONUMENTATION

DEC 01 1998

SECTION



M