

FEB 24 2000

RECORDED

OTTAWA COUNTY REMONUMENTATION

99 JUL 30 PM 12: 26

SECTION

LAND CORNER RECORDATION CERTIFICATE
Filing Requirement of Act 74, Mich. P.A. 1970

Doug Bonnama
REGISTER OF DEEDS
OTTAWA COUNTY, MI

For corners in
OTTAWA

(County)

Located In:	Corner Code #
T 6N R 13W	D-1 N 1/4 Cor Sec 5
T R	Georgetown Twp
T R	
T R	
T R	
S T R	
S T R	
S T R	
S T R	

1. Public Land Survey

2. Property Controlling
in Section

3. Miscellaneous
Property in Sec.

4. Lot No. _____, Recorded Plat _____
5. Private Claims _____

Register of Deeds Stamp & File Number

I, Randal J. Vugteveen, in a field survey on March 16, 1999 do hereby state that under requirements of P.A. 74, Michigan P.A. of 1970, the corner points mentioned in lines 1 and 2 above were in conformance with regulations and rules therefore as required in the current manual of survey instructions of the United States Department of the Interior, Bureau of Land Management or by a decree of a Court of Law and/or that the corner points mentioned in lines 3, 4 and 5 above were in conformance with the rules of the Michigan Board of Land Surveyors or by a Decree of a Court of Law, established, re-established, monumented, recovered, found as expressed below:

NOTE: Not more than 2 corners, all in the same town and range, may be recorded on this certificate.

A	B	C	D	E	F	G	H	I	J	K	L	M
1			▲									
2	6		5		4		3		2		1	
3												
4	7		8		9		10		11		12	
5												
6	18		17		16		15		14		13	
7												
8	19		20		21		22		23		24	
9												
10	30		29		28		27		26		25	
11												
12	31		32		33		34		35		36	
13												

A. Description of original monument and accessories and/or subsequent restoration:
D-1 This Corner was not set by GLO

D-1 Liber 4, Page 19
Nederveld 1979
Found Steel Fence Post
At Fence Corner
6" Basswood Clump N 15.6'
16" Oak ENE 24.2'
8" Basswood WNW 30.5'

R13W
Corner Common to S 1/4 Cor Sec 32, T7N, R12W
As Per Old Nederveld Fieldnotes indicates fence post was set by Doug Bonnama in 1961 at the intersection of N, S, E, & W Fence Lines

B. Description of corner evidence found and/or method applied in restoring or reestablishing corner:
Found 3" Cast Iron Monument

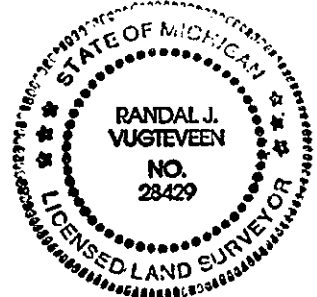
Remains of Wood Fence Corner 0.5' East
Fd Nail in W Side 6" Basswood Clump N0°E 15.60'
Fd Nail in S side 24" OAK N65°E 24.20'
Fd Nail in S side 12" ASH N90°W 30.60'

Accepted Cast Iron Monument as the best available evidence of the position of the corner.

OTTAWA COUNTY
PEER APPROVED 3/22/99
[Signature]

C. Description of monument for corner and accessories established to perpetuate locating the position of the corner:
3" Cast Iron Monument

Set Ottawa County Remon Tag and Nail in NE Side 10" Twin ASH N55°W 31.33'
Found Ottawa County Remon Tag and Nail in S side 12" ASH N90°W 30.60'
Found Ottawa County Remon Tag and Nail in W side 12" Beech S25°E 24.51'
Found Ottawa County Remon Tag and Nail in S side 24" OAK N65°E 24.18'
On E & W Barb Wire Fence
Centerline 3' Creek N90°W 43' +/-



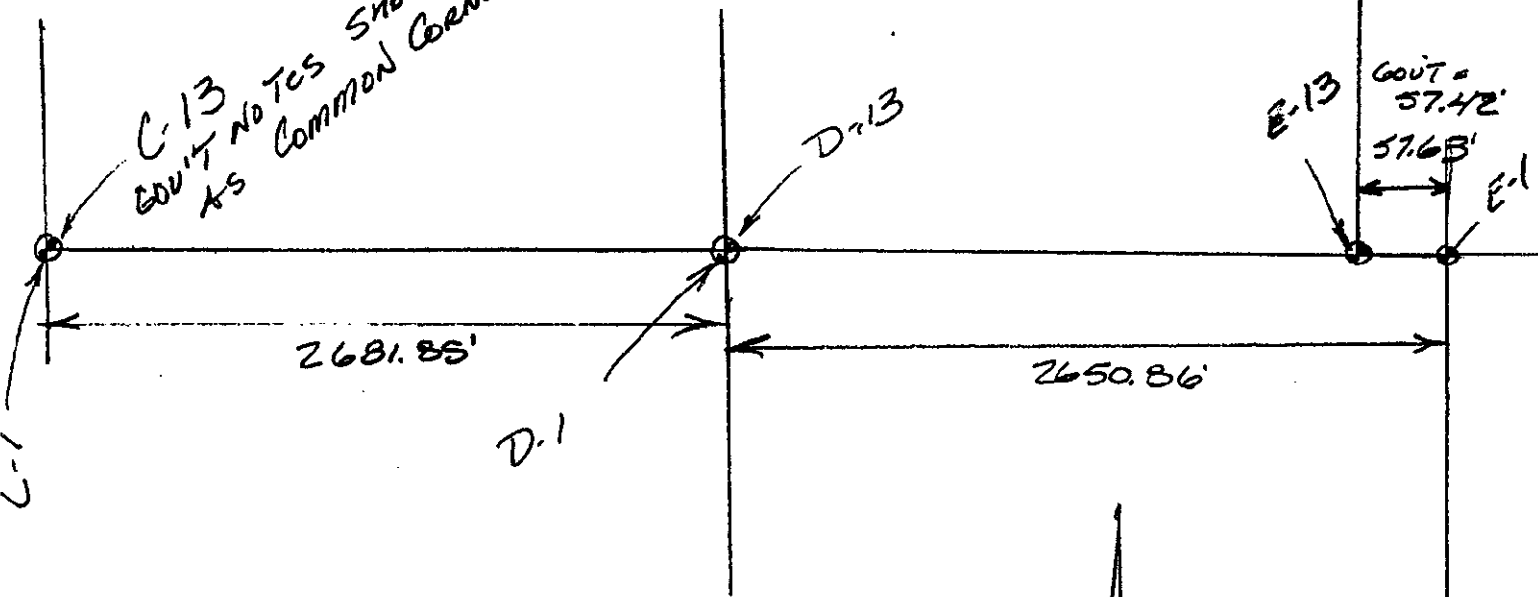
\$11.00 CORNER
Receipt #E2389

Signed by *[Signature]*
Surveyor's Michigan License No. 28429

Date MARCH 16, 1999

Sec 32

C-13
EQUITY NOTES SHOW
AS COMMON CORNER



Sec 5

REED &
B...

FEB 24 2000

SECTION