

SURVEY & REMONUMENTATION

FEB 27 1998

OTTAWA COUNTY REMONUMENTATION

SECTION

LAND CORNER RECORDATION CERTIFICATE
Filing Requirement of Act 74, Mich. P.A. 1970

For corners in

Ottawa	Located In:	Corner Code #
(County)	Chester Twp.	
1. Public Land Survey	DN R 13W	E-1, NE cor.
	T R	Sec. 5
	T R	
	T R	
2. Property Controlling in Section	S T R	
	S T R	
3. Miscellaneous Property in Sec.	S T R	
	S T R	

RECORDED
97 DEC -8 AM 11:27

Ray A. [Signature]
REGISTER OF DEEDS
OTTAWA COUNTY, MI

Register of Deeds Stamp & File Number

4. Lot No. _____, Recorded Plat _____
5. Private Claims _____

I, Randal D. Feenstra, in a field survey on Mar. 13, 1997 do hereby state that under requirements of P.A. 74, Michigan P.A. of 1970, the corner points mentioned in lines 1 and 2 above were in conformance with regulations and rules therefore as required in the current manual of survey instructions of the United States Department of the Interior, Bureau of Land Management or by a decree of a Court of Law and/or that the corner points mentioned in lines 3, 4 and 5 above were in conformance with the rules of the Michigan Board of Land Surveyors or by a Decree of a Court of Law; established, re-established, monumented, recovered, found as expressed below:

NOTE: Not more than 2 corners, all in the same town and range, may be recorded on this certificate.

A	B	C	D	E	F	G	H	I	J	K	L	M
1				●								
2	6		5		4		3		2		1	
3												
4	7		8		9		10		11		12	
5												
6	18		17		16		15		14		13	
7												
8	19		20		21		22		23		24	
9												
10	30		29		28		27		26		25	
11												
12	31		32		33		34		35		36	
13												

A. Description of original monument and accessories and/or subsequent restoration:

G.L.O. Whitcomb (1838) 250 Links East of Post Willow 9" West 1 Link Maple	Thomas Joiner, L-4, P. 272 Set Cast Iron Monument 12" Poplar 8" Poplar Poplar Muskegon County Corner	NW 41.08' NE 48.21' SW 76.16' W 164.93'
--	---	--

NOTE: JOINER REPLACED A CAPPED IRON WHICH HE HAD HELD PREVIOUSLY.

B. Description of corner evidence found and/or method applied in restoring or reestablishing corner:

E-1 Found: Cast Iron Monument

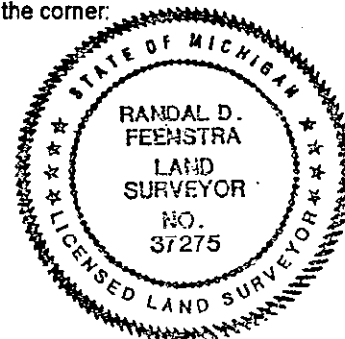
Muskegon County Corner	W	164.94'
24" Poplar	NW	41.08'
16" Poplar	NE	48.20'
27" Poplar	SW	76.20'

P.A. 345 OTTAWA COUNTY
PEER APPROVED 8-18-97
[Signature]

Accepted as a careful and faithful perpetuation of the original corner.

C. Description of monument for corner and accessories established to perpetuate locating the position of the corner:

Set Cast Iron Box around found Monument - on townline to North		
Ottawa County Remon Nail & Tag in SW Side 24" Poplar	NW	41.38'
Ottawa County Remon Nail & Tag in SE Side 16" Poplar	NE	48.42'
Ottawa County Remon Nail & Tag in NE Side 27" Poplar	SW	75.90'
Ottawa County Remon Nail & Tag Top of wood Guardrail Post	SSW	53.64'
E End CL of 36" cmp. under 32nd Ave.	SSE	95.88'
Found 1/2" Iron Rod for the Muskegon County Corner	W	164.94'
CL Sherman	S	1.30'
CL 32nd Ave.	E	0.50'



Signed by Randal D. Feenstra
Surveyor's Michigan License No. 37275

Date March 13, 1997