

SURVEY & REMONUMENTATION

NOV 10 1993

Ottawa COUNTY REMONUMENTATION

COMMISSION

LAND CORNER RECORDATION CERTIFICATE
Filing Requirement of Act 74, Mich. P.A. 1970

For corners in

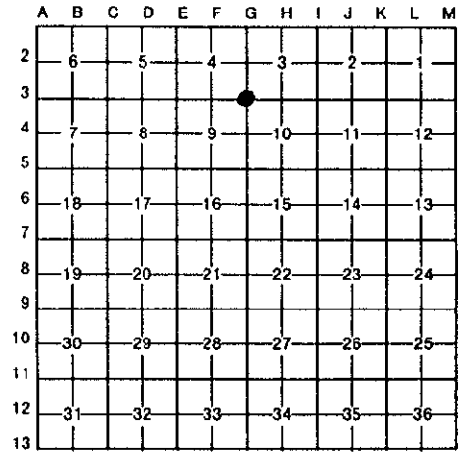
Ottawa (County)	Located In:	Corner Code #
1. Public Land Survey	T <u>6N</u> R <u>13W</u>	<u>G-3 (SE cor.</u> <u>Section 4)</u> <u>Georgetown Twp.</u>
	T _____ R _____	_____
	T _____ R _____	_____
	T _____ R _____	_____
2. Property Controlling in Section	S _____ T _____ R _____	_____
	S _____ T _____ R _____	_____
3. Miscellaneous Property in Sec.	S _____ T _____ R _____	_____
	S _____ T _____ R _____	_____

RECORDED
1993 SEP 29 PM 3:14

Randal J. Vugteveen
REGISTER OF DEEDS
OTTAWA COUNTY, MI

Register of Deeds Stamp & File Number

4. Lot No. _____, Recorded Plat _____
5. Private Claims _____



I, Randal J. Vugteveen, in a field survey on July 16, 19 93, do hereby certify that under requirements of P.A. 74, Michigan P.A. of 1970, the corner points mentioned in lines 1 and 2 above were in conformance with regulations and rules therefore as required in the current manual of survey instructions of the United States Department of the Interior, Bureau of Land Management or by a decree of a Court of Law and/or that the corner points mentioned in lines 3, 4 and 5 above were in conformance with the rules of the Michigan Board of Land Surveyors or by a Decree of a Court of Law; established, re-established, monumented, re-monumented, recovered, found as expressed below:

NOTE: Not more than 4 corners, all in the same town and range, may be recorded on this certificate.

A. Description of original monument and accessories and/or subsequent restoration:

G-3 corner common to Sections 3, 4, 9 & 10 Georgetown	LCRC Liber 5 Pg. 135	LCRC Liber 6 Pg. 232
RC Liber 2 Pg. 213	CIM	1/2" iron with Exxel cap in blacktop
on	6" Tree NE 52.67	PK in NW side p. pole S20°W 83.90
K in P. pole SSW 83.69	8" Tree SE 42.98	PK in SW side p. pole S20°E 128.32
corner shed 206.25	P.P. SSW 83.59	Centerline storm m.h. South 108.71
centerline drain ditch to E N259	8" Quad Tree 35.56	Centerline top bolt on hyd. N20°E 118.5'
		"X" in top of conc. S60°W 37.01
		flared end section

B. Description of corner evidence found and/or method applied in restoring or reestablishing corner:

G-3 Found PK nail at corner on centerline 24th Ave. and accepted it as a careful and faithful perpetuation of the original corner

Found PK in P. pole S20°W 83.86
Storm m.h. South 108.71
Centerline top bolt on hyd. N20°E 118.5'
Found "X" in top flared end section S60°W 37.01

C. Description of monument for corner and accessories established to perpetuate locating the position of the corner:

G-3 Set 3/4" X 24" solid bar with Ottawa County Remon Cap in place of PK nail

Ottawa County Remon Tag & nail in NW side P. pole	S20°W	83.86'
Ottawa County Remon Tag & nail in NE side 14' Twin Elm	S20°E	108.72'
Ottawa County Remon Tag & nail Center storm m.h.	South	108.71'
Ottawa County Remon Tag & nail top center hydrant	N20°E	118.53'
Ottawa County Remon Tag & nail "X" in top of conc. flared end section	S60°W	37.00'

Signed by Randal J. Vugteveen
Surveyor's Michigan License No. 28429

Date SEPT 20, 1993

