

**SURVEY &
REMONUMENTATION**

NOV 10 1993

COMMISSION

OTTAWA COUNTY REMONUMENTATION

**LAND CORNER RECORDATION CERTIFICATE
Filing Requirement of Act 74, Mich. P.A. 1970**

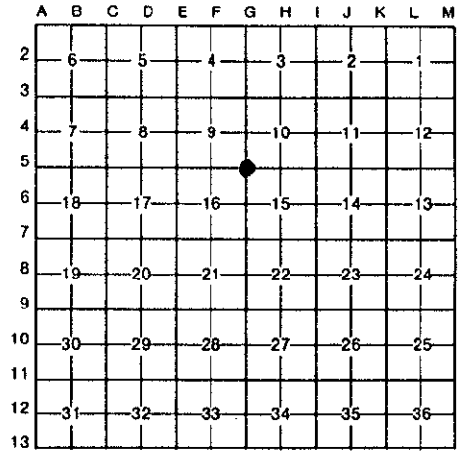
For corners in

<u>Ottawa</u> (County)	Located In:	Corner Code #
1. Public Land Survey	T <u>6N</u> R <u>13W</u>	<u>G-5 (SE cor.</u>
	T _____ R _____	<u>Section 9)</u>
	T _____ R _____	<u>Georgetown Twp.</u>
	T _____ R _____	_____
2. Property Controlling in Section	S _____ T _____ R _____	_____
	S _____ T _____ R _____	_____
3. Miscellaneous Property in Sec.	S _____ T _____ R _____	_____
	S _____ T _____ R _____	_____
4. Lot No. _____, Recorded Plat _____		
5. Private Claims _____		

RECORDED
1993 SEP 29 PM 3:14
Randal J. Vugteveen
REGISTER OF DEEDS
OTTAWA COUNTY, MI

Register of Deeds Stamp & File Number

I, Randal J. Vugteveen, in a field survey on July 16, 19 93, do hereby certify that under requirements of P.A. 74, Michigan P.A. of 1970, the corner points mentioned in lines 1 and 2 above were in conformance with regulations and rules therefore as required in the current manual of survey instructions of the United States Department of the Interior, Bureau of Land Management or by a decree of a Court of Law and/or that the corner points mentioned in lines 3, 4 and 5 above were in conformance with the rules of the Michigan Board of Land Surveyors or by a Decree of a Court of Law; established, re-established, monumented, re-monumented, recovered, found as expressed below:



NOTE: Not more than 4 corners, all in the same town and range, may be recorded on this certificate.

A. Description of original monument and accessories and/or subsequent restoration:
G-5 Corner common to Sections 9, 10, 15 & 16

LCRC recorded in Liber 6 Pg. 248

Nail & tag in SW side 26" Oak	N30°W	62.18'
SW corner garage	N25°E	9.85'
Nail & tag in NE side 28" Oak	S20°E	30.90'
SE corner of house	N10°E	71.86'

B. Description of corner evidence found and/or method applied in restoring or reestablishing corner:

G-5 Found concrete Mon with Rerod on E-W fence and South fence behind house #2400 Pinewood and house #7989 Hearthway

Found Nail & tag SW side 26" Oak	N30°W	62.11'
SW corner garage	N25°E	9.85'
SE corner hse #2400 Pinewood	N10°E	71.74'
Found nail & tag in NE side 18" Oak	S20°E	30.77'

C. Description of monument for corner and accessories established to perpetuate locating the position of the corner:

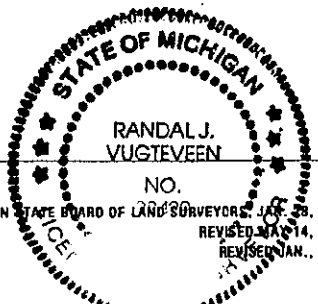
G-5 Set 3/4" X 36" Solid bar with Ottawa County Remon Cap

Ottawa County Remon Tag & nail in SW side 26" Oak	N30°W	62.11'
Ottawa County Remon Tag & nail in NE side 18" Oak	S20°E	30.77'
Ottawa County Remon Tag & nail NW cor foundation hse # 7989 Hearthway	S75°E	76.81'
Ottawa County Remon Tag & nail SW cor garage foundation	N25°E	9.85'

Signed by *Randal J. Vugteveen*

Date SEP 20, 1993

Surveyor's Michigan License No. 28429



FORM APPROVED BY MICHIGAN STATE BOARD OF LAND SURVEYORS, JAN. 13, 1971
REVISED MAR. 14, 1975
REVISED JAN., 1983