

**SURVEY &
REMONUMENTATION**

NOV 10 1993

COMMISSION

**OTTAWA COUNTY REMONUMENTATION
LAND CORNER RECORDATION CERTIFICATE
Filing Requirement of Act 74, Mich. P.A. 1970**

RECORDED
1993 SEP 29 PM 3:14

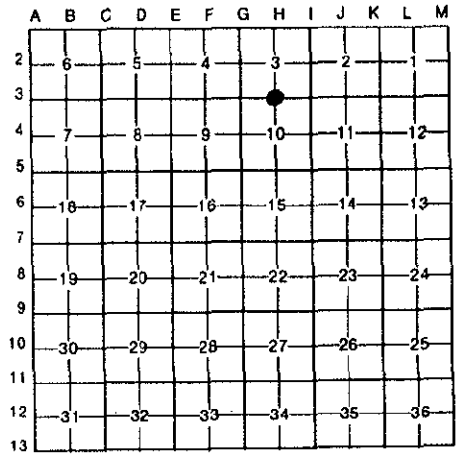
For corners in

<u>Ottawa</u> (County)	Located In:	Corner Code #
1. Public Land Survey	T <u>6N</u> R <u>13W</u>	<u>H-3 (S 1/4 cor</u> <u>Section 3)</u> <u>Georgetown Twp</u>
	T _____ R _____	_____
	T _____ R _____	_____
	T _____ R _____	_____
2. Property Controlling in Section	S _____ T _____ R _____	_____
	S _____ T _____ R _____	_____
3. Miscellaneous Property in Sec.	S _____ T _____ R _____	_____
	S _____ T _____ R _____	_____

Phyllis Johnson
REGISTER OF DEEDS
OTTAWA COUNTY, MI

Register of Deeds Stamp & File Number

4. Lot No. _____, Recorded Plat _____
5. Private Claims _____



I, Randal J. Vugteveen, in a field survey on July 19, 19 93, do hereby certify that under requirements of P.A. 74, Michigan P.A. of 1970, the corner points mentioned in lines 1 and 2 above were in conformance with regulations and rules therefore as required in the current manual of survey instructions of the United States Department of the Interior, Bureau of Land Management or by a decree of a Court of Law and/or that the corner points mentioned in lines 3, 4 and 5 above were in conformance with the rules of the Michigan Board of Land Surveyors or by a Decree of a Court of Law; established, re-established, monumented, re-monumented, recovered, found as expressed below:

NOTE: Not more than 4 corners, all in the same town and range, may be recorded on this certificate.

A. Description of original monument and accessories and/or subsequent restoration:		
H-3 - 1 1/2" Iron	H-3 - 1 1/2" Iron	H-3 set CIM
Nail & tag in centerline 14" Cedar N5°E 100.4'	Nail & BC in W side 20" Cedar N 101.00'	14" Tri. Elm SSW 24.74'
Nail & tag in centerline 10" Birch N40°E 71.35'	Centerline top of MH W 19.26'	9" Cherry WNW 27.08'
Centerline MH N85°W 19.0'	Concrete Mon - E 99.40'	20" Cedar NNE 100.92'
	Nail in SE side 15" Maple NE 64.35'	20" Maple NE 68.86'
	On E edge 3'± wide drainage ditch	Conc. Mon E 99.35'

B. Description of corner evidence found and/or method applied in restoring or reestablishing corner:
H-3 Found cast iron monument in 3' wide N-S ditch at North end muck field and accepted it as a careful and faithful perpetuation of the original corner.

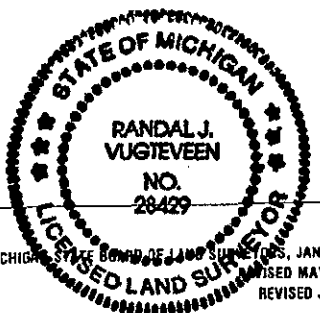
Conc. Mon 0.5' above grnd E 99.33'
Found nail 14" Tri. Elm S10°W 24.71'
Found nail 20" Maple N55°E 64.31'

C. Description of monument for corner and accessories established to perpetuate locating the position of the corner:

H-3		
Ottawa County Remon tag & nail in W. side 14" Triple Elm	S10°W	24.71'
Ottawa County Remon tag & nail in SE side 20" Maple	N55°E	64.31'
Ottawa County Remon tag & nail in W. side 20" Cedar	N5°E	100.87'
Ottawa County Remon tag & nail in N. side 10" Wild Cherry	N75°W	26.97'

Signed by *Randal J. Vugteveen*
Surveyor's Michigan License No. 28429

Date Sept 20, 1993



FORM APPROVED BY MICHIGAN STATE BOARD OF LAND SURVEYORS, JAN. 26, 1971
REVISED MAY 14, 1975
REVISED JAN., 1983