

SURVEY & REMONUMENTATION

DEC 01 1993

OTTAWA COUNTY REMONUMENTATION

RECORDED

93 NOV 11 AM 11:53

COMMISSION

LAND CORNER RECORDATION CERTIFICATE
Filing Requirement of Act 74, Mich. P.A. 1970

Rhonda Callman
REGISTER OF DEEDS
OTTAWA COUNTY, MI

For corners in OTTAWA

(County)

Located In:

Corner Code #

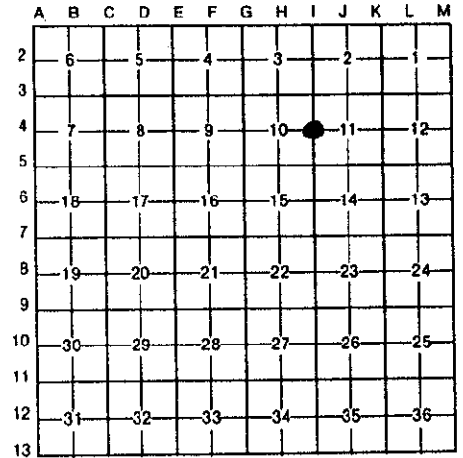
1. Public Land Survey	T	6N	R	13W	I-4 (W 1/4 cor Section 11) Georgetown Twp
	T		R		
	T		R		
	T		R		
2. Property Controlling in Section	S		T	R	
	S		T	R	
3. Miscellaneous Property in Sec.	S		T	R	
	S		T	R	

Register of Deeds Stamp & File Number

4. Lot No. _____, Recorded Plat _____
5. Private Claims _____

I, Randal J. Vugteveen, in a field survey on August 3, 19 93, do hereby certify that under requirements of P.A. 74, Michigan P.A. of 1970, the corner points mentioned in lines 1 and 2 above were in conformance with regulations and rules therefore as required in the current manual of survey instructions of the United States Department of the Interior, Bureau of Land Management or by a decree of a Court of Law and/or that the corner points mentioned in lines 3, 4 and 5 above were in conformance with the rules of the Michigan Board of Land Surveyors or by a Decree of a Court of Law; established, re-established, monumented, re-monumented, recovered, found as expressed below:

NOTE: Not more than 4 corners, all in the same town and range, may be recorded on this certificate.



A. Description of original monument and accessories and/or subsequent restoration:
I-4 Common 1/4 corner to Sections 10 & 11

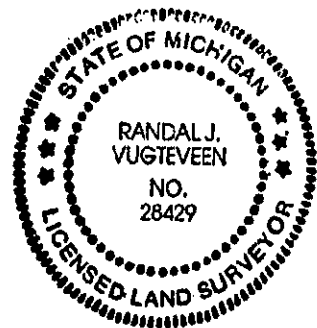
LCRC Liber 2, Page 113	LCRC Liber 3, Page 289
3/4" Iron pipe	Cast Iron Monument
Centerline 16" W Cherry S55E 46.90' /	P. Pole NE 37.09'
Centerline 26" Ash S10E 85.90' / Conc.	Fence post N-NW 45.17'
Mon. plat corner North 43.08' / Centerline	Fence Post NW 68.45'
CP/MBT pole N5E 37.17' / centerline CP/MBT	P. Pole SW 58.68'
pole S25W 58.67'	T. Pole SE 75.81'

B. Description of corner evidence found and/or method applied in restoring or reestablishing corner:
I-4 Found cast iron monument in mon box on centerline Bauer Road and accepted as a careful and faithful perpetuation of the position of the original corner

Conc. mon. North 43.05'	Nail in E side P. Pole N4E 37.08'
PK in W side P. Pole S34W 58.67'	

C. Description of monument for corner and accessories established to perpetuate locating the position of the corner:
I-4 Set Ottawa County Remon Cap on monument and cemented in mon box

- Set Ottawa County Remon Tag & Nail in W side P. Pole N3E 37.19'
- Set Ottawa County Remon Tag & Nail in W side 10" White Pine N6E 42.55'
- Set Ottawa County Remon Tag & Nail in N side 16" Ash S68E 128.25'
- Set Ottawa County Remon Tag & Nail in E side 8" Elm Clump S20E 48.86'
- SW foundation corner, house #1593 Bauer N16E 84.11'



Signed by *Randal J. Vugteveen* Date Nov 5, 1993
Surveyor's Michigan License No. 28429