

**SURVEY &  
REMONUMENTATION**

DEC 01 1998

**SECTION**

**OTTAWA COUNTY REMONUMENTATION  
LAND CORNER RECORDATION CERTIFICATE  
Filing Requirement of Act 74, Mich. P.A. 1970**

For corners in

<u>Ottawa</u> (County)	Located In: Georgetown Township	Corner Code # <u>J-1</u>
1. Public Land Survey	T <u>6N</u> R <u>13W</u>	<u>N 1/4 cor.</u> <u>Sec. 2</u>
	T _____ R _____	_____
	T _____ R _____	_____
	T <u>7N</u> R <u>13W</u>	<u>J-13</u>
2. Property Controlling in Section	S _____ T _____ R _____	_____
	S _____ T _____ R _____	_____
3. Miscellaneous Property in Sec.	S _____ T _____ R _____	_____
	S _____ T _____ R _____	_____
4. Lot No. _____, Recorded Plat _____		
5. Private Claims _____		

**RECORDED**  
98 JUL 24 PM 1:46

*Long Sublette*  
REGISTER OF DEEDS  
OTTAWA COUNTY, MI

Register of Deeds Stamp & File Number

I, Rodney D. Unema, in a field survey on May 21, 19 98, do hereby certify that under requirements of P.A. 74, Michigan P.A. of 1970, the corner points mentioned in lines 1 and 2 above were in conformance with regulations and rules therefore as required in the current manual of survey instructions of the United States Department of the Interior, Bureau of Land Management or by a decree of a Court of Law and/or that the corner points mentioned in lines 3, 4 and 5 above were in conformance with the rules of the Michigan Board of Land Surveyors or by a Decree of a Court of Law; established, re-established, monumented, re-monumented, recovered, found as expressed below:

	A	B	C	D	E	F	G	H	I	J	K	L	M
2	6	5	4	3	2	1							
3													
4	7	8	9	10	11	12							
5													
6	18	17	16	15	14	13							
7													
8	19	20	21	22	23	24							
9													
10	30	29	28	27	26	25							
11													
12	31	32	33	34	35	36							
13													

**NOTE: Not more than 4 corners, all in the same town and range, may be recorded on this certificate.**

**A. Description of original monument and accessories and/or subsequent restoration:**

J-1  
Corner not set by G.L.O.

No recorded L.C.R.C.'s or other witness information available

PA. 345 OTTAWA COUNTY  
PEER APPROVED 6-1-98

*R.D.U.*

**B. Description of corner evidence found and/or method applied in restoring or reestablishing corner:**

J-1  
Found 2" Iron Pipe in swamp  
The position of this pipe fits the calculated position of the corner per the Section breakdown sheet of Exxel Engineering of May, 1997.  
The corner is on line between the SW corner and SE corner of Sec. 35.  
Distance checks with + 0.1' to prev. 1 1/4" Iron 232.64 South of corner.  
No other witnesses found

Corner is common with J-13, T7N, R13W

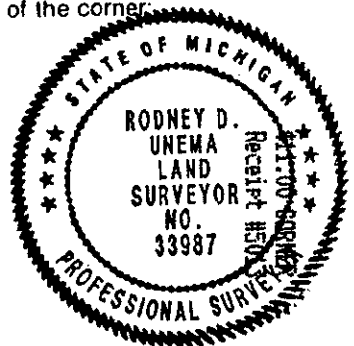
\*Over for sketch

This position not established by original government surveyors.  
This monument is accepted as the best available evidence of the position of the corner.

**C. Description of monument for corner and accessories established to perpetuate locating the position of the corner:**

J-1  
2" Iron Pipe in swamp (water is + 1' deep)  
Set steel "T" fence post on West side of 2" Iron for location  
Set nail & O.C. tag in W side 18" Ash S15°E 188.32'  
Set nail & O.C. tag in E side 22" Oak S23°W 166.66'  
1 1/4" Iron Pipe S5°E 232.75'  
South edge of swamp South 180'

Corner is common with J-13, T7N, R13W



Signed by Rodney D. Unema

Date May 29, 1998

Surveyor's Michigan License No. 33987

FORM APPROVED BY MICHIGAN STATE BOARD OF LAND SURVEYORS, JAN. 28, 197  
REVISED MAY 14, 197  
REVISED JAN., 198

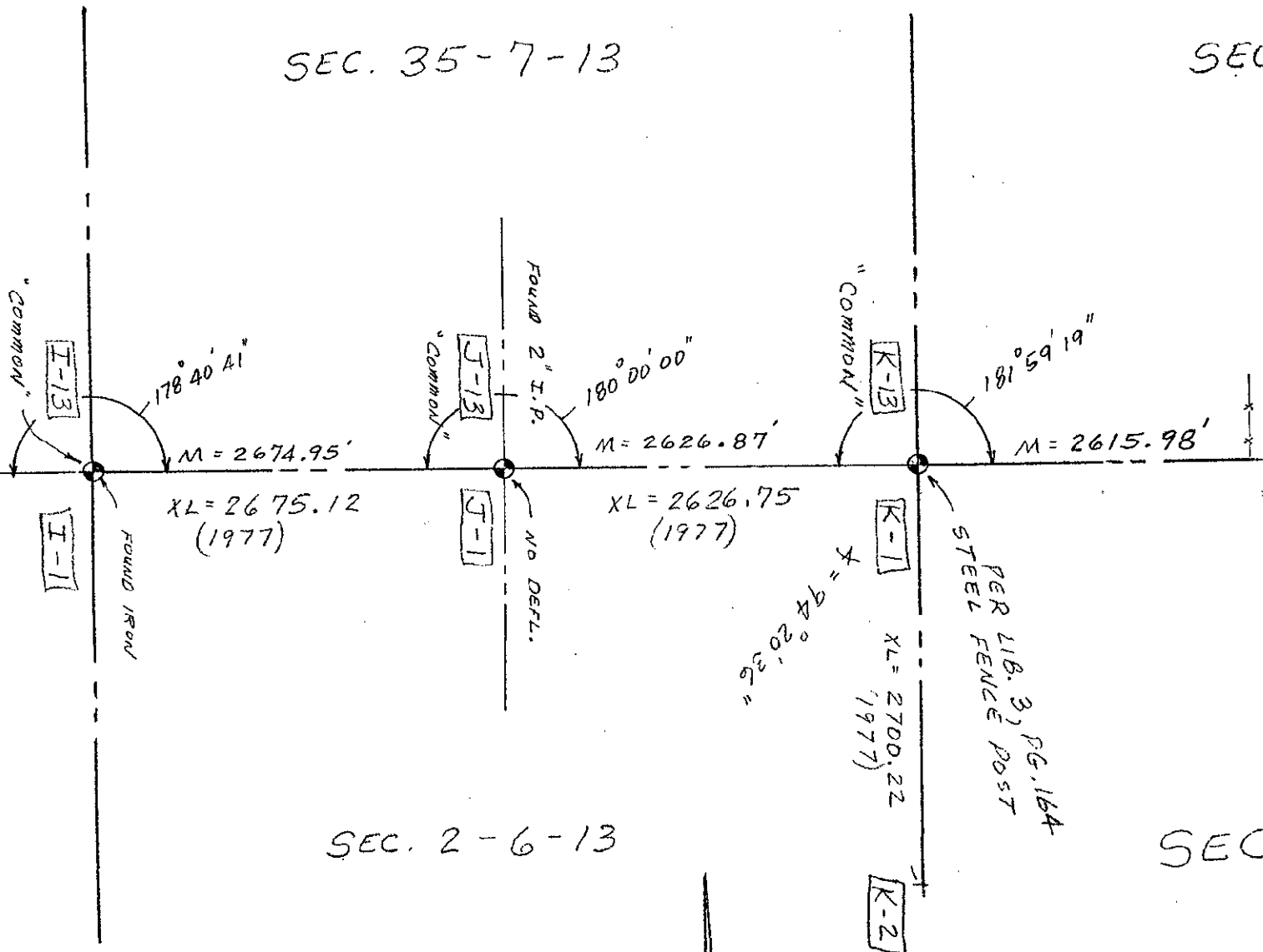
SURVEY &  
REMONUMENTATION

DEC 01 1998

SECTION

SEC. 35-7-13

SEC



SEC. 2-6-13

SEC