

FEB 24 2000

OTTAWA COUNTY REMONUMENTATION

RECORDED

LAND CORNER RECORDATION CERTIFICATE
Filing Requirement of Act 74, Mich. P.A. 1970

99 SEP -9 PM 12: 15

SECTION

For corners in
Ottawa

Randy Schellman
REGISTER OF DEEDS
OTTAWA COUNTY MI

	Located In:		Corner Code #
	Blendon Twp.		
	6N	14W.	A-12W1/4 Cor Sec. 31
1. Public Land Survey	T	R	
	T	R	
	T	R	
	T	R	
2. Property Controlling in Section	S	T	R
	S	T	R
3. Miscellaneous Property in Sec.	S	T	R
	S	T	R

Register of Deeds Stamp & File Number

4. Lot No. _____, Recorded Plat _____
5. Private Claims _____

Randal D. Feenstra Feb. 11 99

I, _____, in a field survey on _____, 19____ do hereby state that under requirements of P.A. 74, Michigan P.A. of 1970, the corner points mentioned in lines 1 and 2 above were in conformance with regulations and rules therefore as required in the current manual of survey instructions of the United States Department of the Interior, Bureau of Land Management or by a decree of a Court of Law and/or that the corner points mentioned in lines 3, 4 and 5 above were in conformance with the rules of the Michigan Board of Land Surveyors or by a Decree of a Court of Law; established, re-established, monumented, recovered, found as expressed below:

NOTE: Not more than 2 corners, all in the same town and range, may be recorded on this certificate.

	A	B	C	D	E	F	G	H	I	J	K	L	M
1													
2	6		5		4		3		2		1		
3													
4	7		8		9		10		11		12		
5													
6	10		17		16		15		14		13		
7													
8	19		20		21		22		23		24		
9													
10	30		29		28		27		26		25		
11													
12	31		32		33		34		35		36		
13													

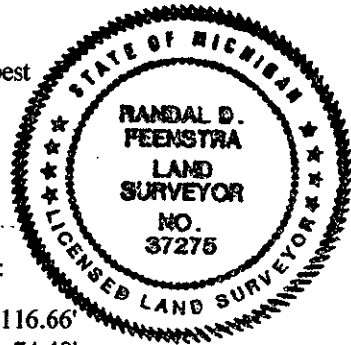
A. Description of original monument and accessories and/or subsequent restoration:

G.L.O. L-1, P-363, 1972 (Roan)	L-6, P-15, 1989 (Joiner)
Not Set A-12 Set Pipe 1/2 way not on line	A-12 Set Cast Iron Monument
Telephone Pole W 44.72'	Nail in NW side Telephone Pole SW 58.72
NW Cor. E Hdwl. SE 39.82;	Nail in NE side Telephone Pole W 44.98
Power Pole SW 58.35'	Centerline top of Hydrant ENE 40.95
Centerline 96th Ave. E 0.37'	Nail in SW side Power Pole SE 69.35
	Square Head Iron S 6.46
	E 1/4 Cor. Sec. 36-6-15 S 15.04'

B. Description of corner evidence found and/or method applied in restoring or reestablishing corner:

A-12 Found: Cast Iron Monument in monument box on Olive Twp. Line
 Found: Nail and Tag SE Side of Power Pole AZ 231°10' 58.74'
 Found: Cast Iron Monument in monument box (Olive Cor.) South 15.12'

This position not established by original government surveyors. This location is accepted as the best available evidence of the position of the corner.



C. Description of monument for corner and accessories established to perpetuate locating the position of the corner:

A-12 Cast Iron Monument in monument box (See Sketch)

Set Ottawa County Remon Nail & Tag in E side of Power Pole	AZ 26°30'	116.66'
Set Ottawa County Remon Nail & Tag in NE side of Power Pole	AZ 136°50'	74.49'
Set Ottawa County Remon Nail & Tag in SE side of Power Pole	AZ 231°10'	58.74'
Set Ottawa County Remon Nail & Tag in E side of Power Pole	AZ 346°45'	198.09'
Cast Iron Monument in monument box (Olive Twp. Cor.)	South	15.12'
Centerline N-S bituminous road (96th Ave.) East		0.6'
Centerline gravel road to East (Barry St.) North		3.0'

411.00 CORNER
Receipt #56820
\$2.00 PHOTO
Receipt #56820

Signed by *Randal D. Feenstra*
Surveyor's Michigan License No. 37275

Date May 14, 1999

FEB 24 2000

SECTION

