

SURVEY & REMONUMENTATION

FEB 27 1998

OTTAWA COUNTY REMONUMENTATION

SECTION

LAND CORNER RECORDATION CERTIFICATE
Filing Requirement of Act 74, Mich. P.A. 1970

For corners in
Ottawa
(County)

Located In: Blendon Twp. Corner Code #

1. Public Land Survey	T <u>6N</u> R <u>14W</u>	G-1, NE cor.
	T ___ R ___	Sec. 4
	T ___ R ___	
	T ___ R ___	
2. Property Controlling in Section	S ___ T ___ R ___	
	S ___ T ___ R ___	
3. Miscellaneous Property in Sec.	S ___ T ___ R ___	
	S ___ T ___ R ___	

RECORDED

97 DEC -8 AM 11:27

Randy [Signature]
REGISTER OF DEEDS
OTTAWA COUNTY, MI

Register of Deeds Stamp & File Number

4. Lot No. _____, Recorded Plat _____
5. Private Claims _____

I, Randal D. Feenstra, in a field survey on Feb. 18, 19 97 do hereby state that under requirements of P.A. 74, Michigan P.A. of 1970, the corner points mentioned in lines 1 and 2 above were in conformance with regulations and rules therefore as required in the current manual of survey instructions of the United States Department of the Interior, Bureau of Land Management or by a decree of a Court of Law and/or that the corner points mentioned in lines 3, 4 and 5 above were in conformance with the rules of the Michigan Board of Land Surveyors or by a Decree of a Court of Law; established, re-established, monumented, recovered, found as expressed below.

NOTE: Not more than 2 corners, all in the same town and range, may be recorded on this certificate.

A	B	C	D	E	F	G	H	I	J	K	L	M
1												
2	6	5	4	3	2	1						
3												
4	7	8	9	10	11	12						
5												
6	18	17	16	15	14	13						
7												
8	19	20	21	22	23	24						
9												
10	30	29	28	27	26	25						
11												
12	31	32	33	34	35	36						
13												

A. Description of original monument and accessories and/or subsequent restoration:

G.L.O. (1832) Calvin Britain, D.S. Set Post 75 fks W of Post 6" Hemlock S 37°E 37fks 10" Hemlock S 42°W 47 fks	LCRC, L-2, P. 543 G-1 Found 1 1/4" Round Iron P.K. in E Side T. Pole SSW 82.63' P.K. in N Side P. Pole WSW 90.93' P.K. in E Side P. Pole NNW 109.60' P.K. in W Side T. Pole NNE 67.65' 1" Iron W 49.44'	LCRC, L-4, P. 196 G-1 Set Cast Iron Monument T. Pole SW 42.09' St. Sign N 24.40' Stop Sign SE 37.10' Allendale Corn. E 49.46'	LCRC, L-6, P. 153 G-1 Replaced Cast Iron Monument 6/26/91 After Const. P.K. CL Top Cone Curb S 30°W 38.92' P.K. CL Top Cone Curb S 60°E 57.78' Section Corner East 49.47' 16D W Side 8" Poplar N 30°E 158.76' P.K. NE Side P. Pole N 20°W 109.55' P.K. N Side P. Pole S 60°W 92.85'
--	---	--	--

NOTE:
ERROR ON
RECORDED DOCUMENT
- SHOULD READ 'E'

B. Description of corner evidence found and/or method applied in restoring or reestablishing corner:

G-1 Found: Cast Iron Monument in Mon. Box

Found : Nail in W. side 8" Poplar	NE	158.86'
Nail in N. side P. Pole	SW	92.82'
Nail in NE side P. Pole	NNW	109.60'
Allendale Corner	E	49.49'

P.A. 345 OTTAWA COUNTY
PEER APPROVED 8-18-97

[Signature]

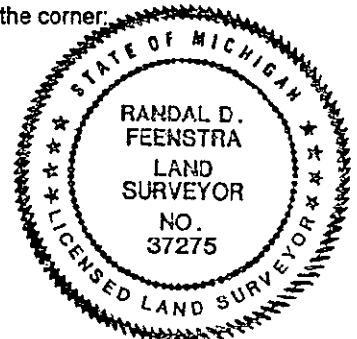
Accepted as a careful and faithful perpetuation of the position of the original corner.

C. Description of monument for corner and accessories established to perpetuate locating the position of the corner:

G-1: Cast Iron Monument in Mon. Box on townline to North

Ottawa County Remon Nail and Tag in NE Side of L. Pole	S 52°E	63.45'
Ottawa County Remon Nail & Tag in W. Side of 8" Poplar	N 24°E	158.86'
Ottawa County Remon Nail & Tag in NE Side of P. Pole	N 23°W	109.60'
Ottawa County Remon Nail & Tag in N Side of P. Pole	S 69°W	92.82'
Allendale Corner (C.I.M.)	East	49.49'

On CL E-W Bit. Rd. (Fillmore St)
On CL Bit. Rd. to S (72nd Ave.)
CL Gravel Rd. to N 46' E



* 7.5x9 INCHES
\$ 1.00 PHOTO

Signed by [Signature]
Surveyor's Michigan License No. 37275

Date February 18, 1997