

SURVEY & REMONUMENTATION

APR 05 1996
COMMISSION

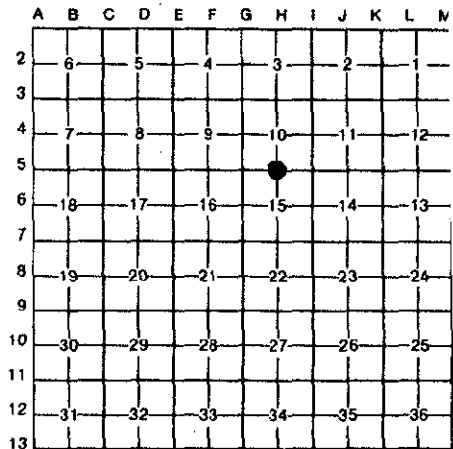
**OTTAWA COUNTY REMONUMENTATION
LAND CORNER RECORDATION CERTIFICATE
Filing Requirement of Act 74, Mich. P.A. 1970**

For corners in
Ottawa

(County)	Located In:	Corner Code #
1. Public Land Survey	Blendon Twp. T <u>6N</u> R <u>14W</u>	H-5, N 1/4 cor. Sec. 15
	T _____ R _____	_____
	T _____ R _____	_____
	T _____ R _____	_____
2. Property Controlling in Section	S _____ T _____ R _____	_____
	S _____ T _____ R _____	_____
3. Miscellaneous Property in Sec.	S _____ T _____ R _____	_____
	S _____ T _____ R _____	_____
4. Lot No. _____, Recorded Plat _____		
5. Private Claims _____		

RECORDED
95 NOV 29 PM 1:42
Phyllis Kellerman
REGISTER OF DEEDS
OTTAWA COUNTY, MI
Register of Deeds Stamp & File Number

Randal D. Feenstra November 6 95
I, _____, in a field survey on _____, 19 _____, do hereby certify that under requirements of P.A. 74, Michigan P.A. of 1970, the corner points mentioned in lines 1 and 2 above were in conformance with regulations and rules therefore as required in the current manual of survey instructions of the United States Department of the Interior, Bureau of Land Management or by a decree of a Court of Law and/or that the corner points mentioned in lines 3, 4 and 5 above were in conformance with the rules of the Michigan Board of Land Surveyors or by a Decree of a Court of Law; established, re-established, monumented, re-monumented, recovered, found as expressed below:



NOTE: Not more than 4 corners, all in the same town and range, may be recorded on this certificate.

A. Description of original monument and accessories and/or subsequent restoration:

G.L.O. (1832)	L-2, P-705, 1974	L-5, P-161, 1984	
Calvin Britain	1/2" Iron	1/2" Iron	
15" W. Ash N70°W 15 lks.	Pk in T. Pole SSW 23.21'	Pk in P. Pole SSW 23.30'	
10" Pine N61°30'E 30 lks.	Nail in 28" Maple SW 40.96'	Nail in 30" Maple SW 40.92'	
	Nail in 8" Poplar NNE 30.85'	Nail in 12" Poplar ENE 49.35'	
	Nail in 6" Poplar ESE 27.56'	Nail in 8" Poplar E 30.86'	
	N-S Fence Line W 8.0'		

B. Description of corner evidence found and/or method applied in restoring or reestablishing corner:

Found : 1/2" Pipe Accepted as a careful and faithful perpetuation of the position of the original corner.

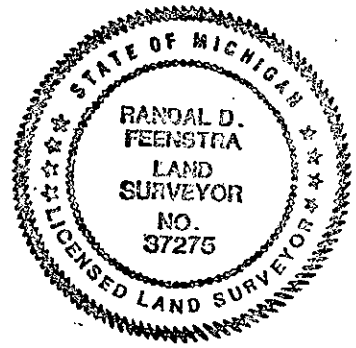
Nail & Tag in E side 34" Maple SW 40.90'

P.A. 345 OTTAWA COUNTY
PEER APPROVED 11/20/95
Kelley D. Redwood
KDR

C. Description of monument for corner and accessories established to perpetuate locating the position of the corner:

H-5	Set Ottawa County Remon. Bar and Cap in Gravel		
	Ottawa County Remon Nail & Tag in SW side Twin 10" Maple	33°	30.12'
	Ottawa County Remon Nail & Tag in SW side P. Pole	301°	28.63'
	Ottawa County Remon. Nail & Tag in W. side 14" Poplar	172°	49.43'
	Ottawa County Remon. Nail & Tag in N side 34" Maple	237°	41.00'

2' N of centerline Gravel Drive



Signed by *Randal D. Feenstra* Date November 6, 1995

Surveyor's Michigan License No. 37275