

**SURVEY & REMONUMENTATION**

**FEB 27 1998**

**SECTION**

**OTTAWA COUNTY REMONUMENTATION  
LAND CORNER RECORDATION CERTIFICATE  
Filing Requirement of Act 74, Mich. P.A. 1970**

For corners in

<u>Ottawa</u> (County)	Located in:	Corner Code #
	Blendon Twp.	
1. Public Land Survey	T <u>6N</u> R <u>14W</u>	I-1, NE Cor.
	T <u>    </u> R <u>    </u>	Sec. <u>3</u>
	T <u>    </u> R <u>    </u>	
	T <u>    </u> R <u>    </u>	
2. Property Controlling in Section	S <u>    </u> T <u>    </u> R <u>    </u>	
	S <u>    </u> T <u>    </u> R <u>    </u>	
3. Miscellaneous Property in Sec.	S <u>    </u> T <u>    </u> R <u>    </u>	
	S <u>    </u> T <u>    </u> R <u>    </u>	

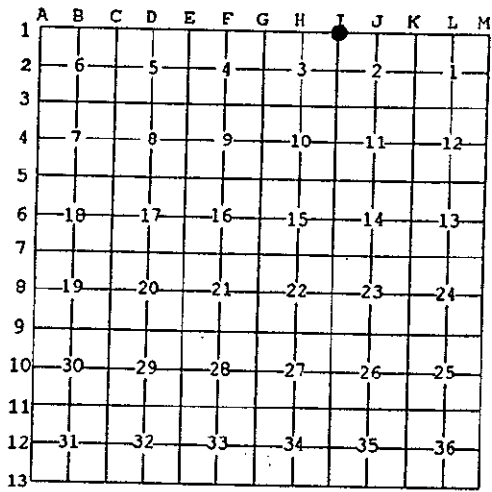
**RECORDED**  
97 DEC -8 AM 11:41

*Gary Schiller*  
REGISTER OF DEEDS  
OTTAWA COUNTY, MI

Registrar of Deeds Stamp & File Number

4. Lot No. \_\_\_\_\_, Recorded Plat \_\_\_\_\_  
5. Private Claims \_\_\_\_\_

I, Randal D. Feenstra, in a field survey on Feb. 19, 1997 do hereby state that under requirements of P.A. 74, Michigan P.A. of 1970, the corner points mentioned in lines 1 and 2 above were in conformance with regulations and rules therefore as required in the current manual of survey instructions of the United States Department of the Interior, Bureau of Land Management or by a decree of a Court of Law and for that the corner points mentioned in lines 3, 4 and 5 above were in conformance with the rules of the Michigan Board of Land Surveyors or by a Decree of a Court of Law; established, re-established, monumented, recovered, found as expressed below:



NOTE: Not more than 2 corners, all in the same town and range, may be recorded on this certificate.

A. Description of original monument and accessories and/or subsequent restoration:

G.L.O. (1832)	L.C.R.C., L. 3, P. 338	L.C.R.C., L. 4, P. 20
Calvin Britain, D.S.	I-1 found 1" Pipe	I-1 found 1" Pinched iron
Post 27 lks. W of Post	SW 36.00' T.P.	PK on Face T. Pole
10" Beech S 30°W 28 lks.	SE 44.90' St. Sign	Nail on S. Side P. Pole
12" Maple S 65°E 40 lks.	ENE 95.04' P. Pole	Centerline Street Sign
	E 18.37 Allendale Cor.	Iron
		SW 35.95'
		ENE 95.09'
		ESE 45.1'
		E 18.36'

B. Description of corner evidence found and/or method applied in restoring or reestablishing corner:

I - 1 Found Cast Iron Monument in Monument Box

Nail and Tag W. Side 19" Elm	SE	103.14'
PK N. Side P. Pole	ENE	95.05'
60d nail S. Side P. Pole	NE	107.82'
Allendale Cor.	E	18.40'

PA. 345 OTTAWA COUNTY  
PEER APPROVED 11-17-97  
*R.D.F.*

Accepted as a careful and faithful perpetuation of the original corner.

C. Description of monument for corner and accessories established to perpetuate locating the position of the corner:

I - 1 Cast Iron Monument in Monument Box 0.24' South of Townline to North (see sketch on back)

Nail and Remon. Tag E. Side P. Pole	S6°W	137.53'
Nail and Remon. Tag W. Side 19" Elm	S38°E	103.14'
Nail and Remon. Tag N. Side P. Pole	N70°E	95.05'
Nail and Remon. Tag S. Side P. Pole	N55°E	107.82'
Allendale Cor. (Cast Iron Monument)	E	18.40'
On Centerline E-W Bituminous Road (Fillmore St.)		
Centerline Gravel Road to S. (64th Ave.)E	8'	
Centerline Gravel Road to N. (64th Ave.)E	18'	



Signed by Randal D. Feenstra  
Surveyor's Michigan License No. 37275

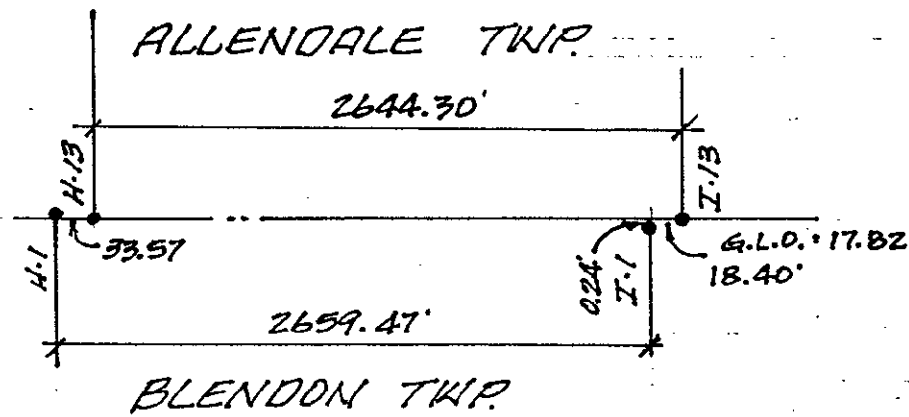
February 27, 1997  
Date \_\_\_\_\_

L.C.R.C., L. 4, P. 168

I - 1	Set Cast Iron Monument		
	Power Pole	NE	95.03'
	11" Tree	SE	103.28'
	Telephone Pole	SW	35.95'
	Allendale Corner East		18.35'

L.C.R.C., L. 6, P. 151

I - 1	Replaced Cast Monument		
	Nail and Tag E. Side Twin 12" Elm	N5°W	107.63'
	60d Nail S. Side Power Pole	N50°E	107.65'
	P.K. in N. Side Power Pole	N70°E	95.07'
	Nail in NE Side 18" Elm	S30°E	103.44'
	Nail in Top of 6" Post	S30°W	36.07'
	Allendale Corner	East	18.37'



SURVEY &  
REMONUMENTATION

FEB 27 1998

SECTION