

SURVEY & REMONUMENTATION

APR 05 1996

COMMISSION

**OTTAWA COUNTY REMONUMENTATION
LAND CORNER RECORDATION CERTIFICATE
Filing Requirement of Act 74, Mich. P.A. 1970**

For corners in
Ottawa

(County)

Located In:

Corner Code #

	Blendon Twp.		
	6N	14W	
1. Public Land Survey	T	R	I-11, SE Cor.
	T	R	Sec. 27
	T	R	
	T	R	
2. Property Controlling in Section	S	T	R
	S	T	R
3. Miscellaneous Property in Sec.	S	T	R
	S	T	R

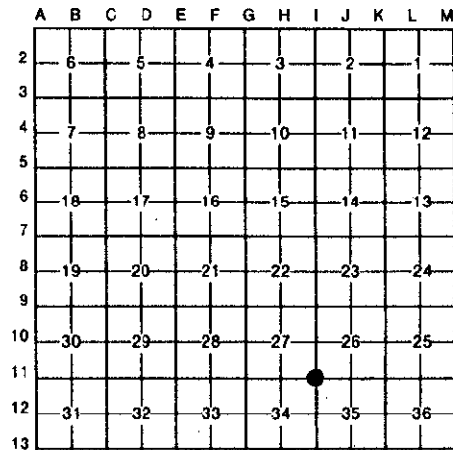
RECORDED

95 NOV 29 PM 1:43

Randy D. Feenstra
REGISTER OF DEEDS
OTTAWA COUNTY, MI

Register of Deeds Stamp & File Number

4. Lot No. _____, Recorded Plat _____
5. Private Claims _____



Randal D. Feenstra November 6 95

I, _____, in a field survey on _____, 19 _____, do hereby certify that under requirements of P.A. 74, Michigan P.A. of 1970, the corner points mentioned in lines 1 and 2 above were in conformance with regulations and rules therefore as required in the current manual of survey instructions of the United States Department of the Interior, Bureau of Land Management or by a decree of a Court of Law and/or that the corner points mentioned in lines 3, 4 and 5 above were in conformance with the rules of the Michigan Board of Land Surveyors or by a Decree of a Court of Law; established, re-established, monumented, re-monumented, recovered, found as expressed below:

NOTE: Not more than 4 corners, all in the same town and range, may be recorded on this certificate.

A. Description of original monument and accessories and/or subsequent restoration:

G.L.O. (1832)	LIBER 2, PAGE 363 (1973)	LIBER 5, PAGE 301 (1988)
Calvin Britain	"X" on stone	Iron
8" Beech N35°W 6 lks.	Nail in P. Pole SE 90.40'	SW Car Barn Fndn NE 209.3'
7" Beech East 28 lks	Nail in 24" Maple ESE 135.88'	Pk in P. Pole SE 90.52'
	Nail in T. Pole SW 44.57"	Pk in P. Pole SW 44.97'
	Nail in stump NE 49.60'	
	St. sign SE 37.06'	

B. Description of corner evidence found and/or method applied in restoring or reestablishing corner:

Found: 1/2" IRON Accepted as a careful and faithful perpetuation of the position of the original corner.

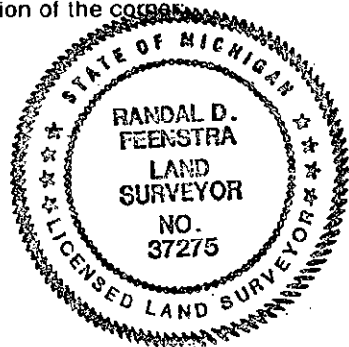
Pk in N. Side P. Pole SE 90.52'
Pk in SE side cut-off P. Pole SW 44.78'

P.A. 345 OTTAWA COUNTY
PEER APPROVED 11/20/95
Randy D. Feenstra
RDN

C. Description of monument for corner and accessories established to perpetuate locating the position of the corner:

I-11 Set Ottawa County Remon. Bar and Cap in gravel	
Ottawa County Remon Nail & Tag in N side P. Pole	124° 90.54'
Ottawa County Remon Nail & Tag in W side 30"Oak	169° 136.04'
Ottawa County Remon Nail & Tag in SE side cut-off P. Pole	221° 44.82'
SW Cor. Fndn. to Hse. #5615	303° 176.53'

on centerline "X" Van Buren & 64th Ave.



Signed by *Randal D. Feenstra*
37275

November 6, 1995

Date _____

Surveyor's Michigan License No. _____